

\$435,000 - 1727 E Sagemoor Drive, Meridian

MLS® #98962126

\$435,000

3 Bedroom, 2.00 Bathroom, 1,692 sqft
Residential on 0.14 Acres

Sageland, Meridian, ID

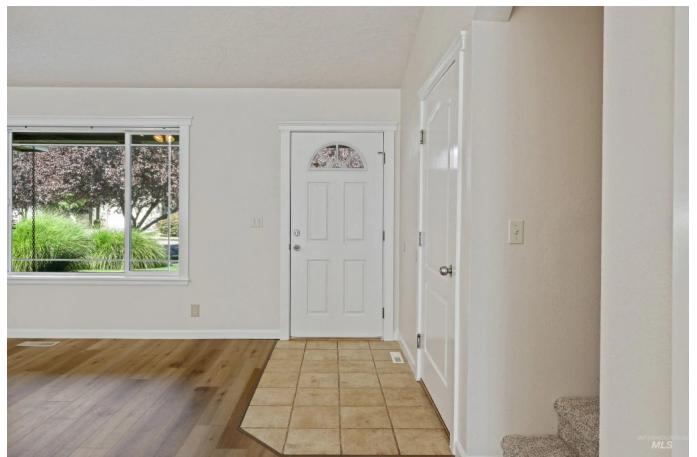
Set on a quiet, low-traffic street, this home blends character with thoughtful details. The open great room design features vaulted ceilings, abundant windows, a fireplace with built-ins, and a tiled kitchen island perfect for gathering. Fresh paint and new carpet complement the timeless layout. The primary suite offers vaulted ceilings that carry through the primary bath, tiled floors, dual sinks, and a walk-in closet. Upstairs, an expansive bonus room provides flexible living space. Just minutes from the freeway, YMCA, shopping, dining, and St. Luke's medical facilities, this well-maintained home delivers both comfort and convenience.

Built in 2005

Essential Information

MLS® #	98962126
Price Per SQFT	\$257
Bedrooms	3
Bathrooms	2.00
Square Footage	1,692
Acres	0.14
Year Built	2005
Type	Residential
Sub-Type	Single Family Residence
Status	Active

Community Information



Address	1727 E Sagemoor Drive
Area	Meridian SE - 1000
Subdivision	Sageland
City	Meridian
County	Ada
State	ID
Zip Code	83642

Amenities

Utilities	Sewer Connected, Cable Connected, Broadband Internet
Parking Spaces	2
Parking	Attached, Finished Driveway
# of Garages	2
Golf Course	N
Virtual Tour	https://tourfactory.com/idxr3224026

Interior

Interior Features	Bath-Master, Bed-Master Main Level, Split Bedroom, Great Room, Rec/Bonus, Walk-In Closet(s), Pantry, Tile Counters
Appliances	Gas Water Heater, Dishwasher, Disposal, Microwave, Oven/Range Freestanding, Refrigerator
Heating	Forced Air, Natural Gas
Cooling	Central Air
Fireplace	Yes
Fireplaces	One, Gas
Stories	Single w/ Upstairs Bonus Room
Primary On Main	Yes

Exterior

Lot Description	Standard Lot 6000-9999 SF, Irrigation Available, Auto Sprinkler System, Full Sprinkler System, Pressurized Irrigation Sprinkler System, Irrigation Sprinkler System
Roof	Composition

School Information

District	West Ada School District
Elementary	Pepper Ridge
Middle	Lewis and Clark
High	Mountain View

Additional Information

Date Listed	September 19th, 2025
Days on Market	22
HOA Fees	\$260
HOA Fees Freq.	Semi-Annually
Property Taxes	\$2,042
Tax Year	2024
Office	Silvercreek Realty Group
Contact Info	broker@silvercreekrealty.com

Listing Details

Listing Office	Silvercreek Realty Group
----------------	--------------------------



IDX information is provided exclusively for consumers' personal, non-commercial use, and may not be used for any purpose other than to identify prospective properties consumers may be interested in purchasing. IMLS does not assume any liability for missing or inaccurate data. Information provided by IMLS is deemed reliable but not guaranteed.

Listing information last updated on October 12th, 2025 at 8:03am MDT