

\$615,000 - 420 S Diesel Way, Boise

MLS® #98962072

\$615,000

5 Bedroom, 3.00 Bathroom, 2,376 sqft

Residential on 0.20 Acres

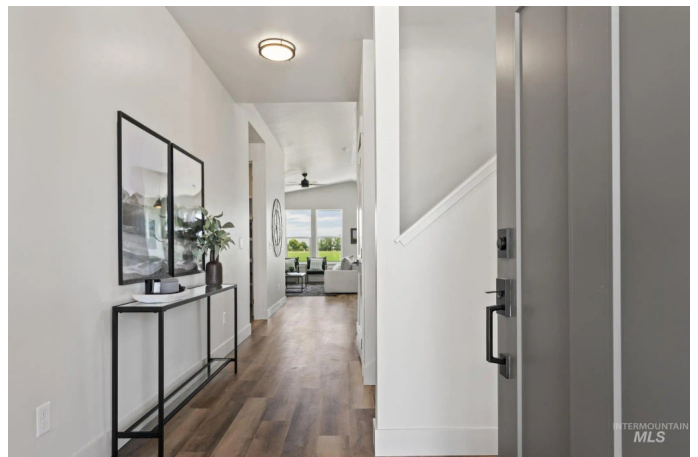
Mayfield Springs, Boise, ID

Call for Seller incentive rate buy-down! The Summit floor plan by Bear Homes is a thoughtfully designed 2 story home with the primary bedroom and laundry on the MAIN level. This spacious floor plan offers multiple living areas and quality finishes throughout. The kitchen is equipped with stainless steel appliances, a large walk-in pantry, quartz countertops, soft-close cabinetry, and dovetail drawers. Durable LVP flooring in main areas, 9' ceilings, and hand-textured walls add style and comfort. Enjoy beautiful mountain views from your large covered patio, perfect for relaxing or entertaining. The community features scenic walking paths and open common areas for outdoor enjoyment. Front and back landscaping included as well as full fencing. Located just minutes from Micron and all the recreational opportunities and amenities of East Boise like Lucky Peak, the Greenbelt, hiking trails and more. Annual conservation fee of \$60. Photos Similar.

Built in 2025

Essential Information

MLS® #	98962072
Price Per SQFT	\$259
Bedrooms	5
Bathrooms	3.00
Square Footage	2,376
Acres	0.20



Year Built	2025
Type	Residential
Sub-Type	Single Family Residence
Status	Active

Community Information

Address	420 S Diesel Way
Area	Boise SE - 0300
Subdivision	Mayfield Springs
City	Boise
County	Elmore
State	ID
Zip Code	83716
Builder	Bear Homes

Amenities

Utilities	Sewer Connected
Parking Spaces	3
Parking	Attached
# of Garages	3
Golf Course	N

Interior

Interior Features	Bed-Master Main Level, Den/Office, Walk-In Closet(s), Pantry, Kitchen Island, Granite Counters
Appliances	Electric Water Heater, Dishwasher, Disposal, Microwave, Oven/Range Built-In
Heating	Electric, Forced Air
Cooling	Central Air
Stories	Two
Primary On Main	Yes

Exterior

Lot Description	Standard Lot 6000-9999 SF, Sidewalks, Auto Sprinkler System, Drip Sprinkler System, Partial Sprinkler System
Roof	Composition, Architectural Style

School Information

District	Mountain Home School District #193
Elementary	East - Mtn Home

Middle	Mtn Home
High	Mountain Home

Additional Information

Date Listed	September 18th, 2025
Days on Market	21
HOA Fees	\$300
HOA Fees Freq.	Quarterly
New Construction	Yes
Tax Year	2025
Office	Silvercreek Realty Group
Contact Info	broker@silvercreekrealty.com

Listing Details

Listing Office	Silvercreek Realty Group
----------------	--------------------------



IDX information is provided exclusively for consumers' personal, non-commercial use, and may not be used for any purpose other than to identify prospective properties consumers may be interested in purchasing. IMLS does not assume any liability for missing or inaccurate data. Information provided by IMLS is deemed reliable but not guaranteed.

Listing information last updated on October 14th, 2025 at 8:18am MDT