

\$1,399,000 - 1117 N Morehouse Ave, Eagle

MLS® #98961986

\$1,399,000

4 Bedroom, 4.00 Bathroom, 4,480 sqft
Residential on 0.26 Acres

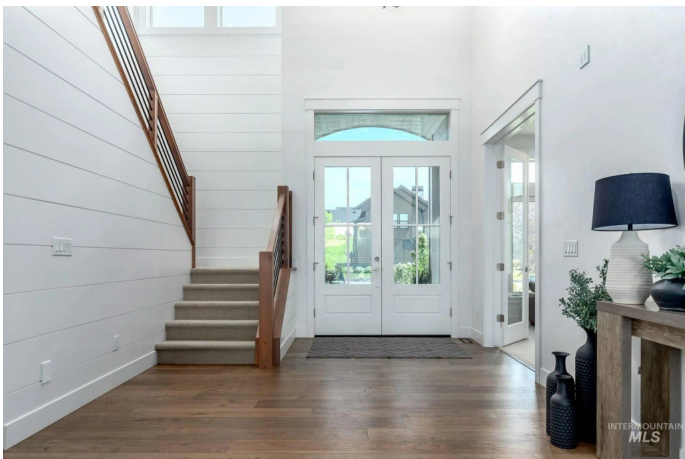
Legacy, Eagle, ID

Nestled in the prestigious Legacy community, this Sterling Homes masterpiece offers a seamless blend of elegance and modern comfort. Thoughtfully designed with high-end finishes, the home features custom millwork, upscale wall details, and premium flooring throughout. Soaring double-height ceilings and expansive walls of glass create a bright, open atmosphere, filling the living spaces with natural light while enhancing the sense of grandeur. The open-concept layout allows for effortless flow between everyday living areas, ideal for both relaxing and entertaining. The gourmet kitchen is as functional as it is beautiful, highlighted by a generous island perfect for gatherings, commercial-grade appliances, and abundant ceiling-height cabinetry. A spacious butler’s pantry adds even more storage and workspace, keeping the stunning marble countertops free of clutter.

Built in 2022

Essential Information

MLS® #	98961986
Price Per SQFT	\$312
Bedrooms	4
Bathrooms	4.00
Square Footage	4,480
Acres	0.26
Year Built	2022
Type	Residential



Sub-Type	Single Family Residence
Status	Active

Community Information

Address	1117 N Morehouse Ave
Area	Eagle - 0900
Subdivision	Legacy
City	Eagle
County	Ada
State	ID
Zip Code	83616
Builder	Sterling Homes

Amenities

Utilities	Sewer Connected
Parking Spaces	4
Parking	Attached, RV Access/Parking, Finished Driveway
# of Garages	4
Has Pool	Yes
Pool	Community
RV/Boat Parking	Yes
Golf Course	N
Virtual Tour	https://www.1117nmorehouseave.com/unbranded

Interior

Interior Features	Bath-Master, Bed-Master Main Level, Guest Room, Den/Office, Great Room, Rec/Bonus, Double Vanity, Central Vacuum Plumbed, Walk-In Closet(s), Breakfast Bar, Pantry, Kitchen Island
Appliances	Gas Water Heater, Tank Water Heater, Dishwasher, Disposal, Double Oven, Microwave, Oven/Range Built-In, Refrigerator
Heating	Forced Air, Natural Gas
Cooling	Central Air
Fireplace	Yes
Fireplaces	Two
Stories	Two
Primary On Main	Yes

Exterior

Lot Description	10000 SF - .49 AC, Garden, R.V. Parking, Sidewalks, Auto Sprinkler
-----------------	--

System, Full Sprinkler System, Pressurized Irrigation Sprinkler System
Roof Composition

School Information

District West Ada School District
Elementary Eagle
Middle Star
High Eagle

Additional Information

Date Listed September 18th, 2025
Days on Market 26
HOA Fees \$424
HOA Fees Freq. Quarterly
Property Taxes \$4,961
Tax Year 2024
Office Keller Williams Realty Boise
Contact Info broker@kwboise.com

Listing Details

Listing Office Keller Williams Realty Boise



IDX information is provided exclusively for consumers' personal, non-commercial use, and may not be used for any purpose other than to identify prospective properties consumers may be interested in purchasing. IMLS does not assume any liability for missing or inaccurate data. Information provided by IMLS is deemed reliable but not guaranteed.

Listing information last updated on October 14th, 2025 at 4:48pm MDT