

# \$542,900 - 1902 E Birchwood Dr., Eagle

MLS® #98961921

**\$542,900**

3 Bedroom, 2.00 Bathroom, 1,412 sqft  
Residential on 0.16 Acres

Edgewood Estate, Eagle, ID

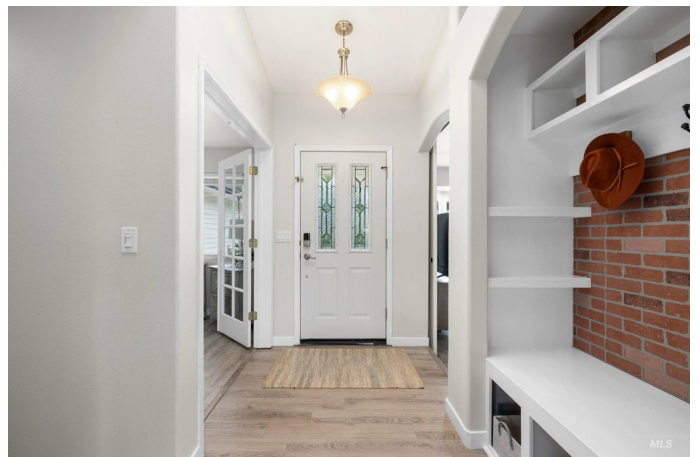
Discover the perfect blend of comfort, convenience, and opportunity at 1902 Birchwood in Eagle. This 3-bedroom, 2-bath home includes a bonus room, ideal for a home office, playroom, or guest retreat. Recently operated as a successful short-term rental, this property offers flexibility for both personal living and investment potential. Step inside to find a warm, inviting layout with spaces that flow easily for everyday living or entertaining. Fresh paint and cozy interiors set the scene for hosting your gatherings. Right outside your front door, youâ€™ll find inviting green space and mature, upgraded landscaping that creates a private, park-like setting. Youâ€™ll love being just minutes from Eagleâ€™s downtown, where local shops, dining, and community events bring neighbors together. Parks, trails, and recreation are nearby, making it easy to enjoy Idahoâ€™s active lifestyle. With fresh interior paint, and major upgrade to landscaping including privacy tree! Whether youâ€™re looking for a turnkey rental property or a home base thatâ€™s close to everything Eagle has to offer, this one is it!

Built in 1995

## Essential Information

MLS® # 98961921

Price Per SQFT \$384



Bedrooms	3
Bathrooms	2.00
Square Footage	1,412
Acres	0.16
Year Built	1995
Type	Residential
Sub-Type	Single Family Residence
Status	Active

### Community Information

Address	1902 E Birchwood Dr.
Area	Eagle - 0900
Subdivision	Edgewood Estate
City	Eagle
County	Ada
State	ID
Zip Code	83616

### Amenities

Utilities	Sewer Connected
Parking Spaces	2
Parking	Attached, Finished Driveway
# of Garages	2
Golf Course	N

### Interior

Interior Features	Bed-Master Main Level, Den/Office, Kitchen Island
Appliances	Gas Water Heater, Dishwasher, Disposal, Microwave, Oven/Range Freestanding
Heating	Forced Air, Natural Gas
Cooling	Central Air
Fireplace	Yes
Fireplaces	One, Gas, Insert
Stories	One
Primary On Main	Yes

### Exterior

Lot Description	Standard Lot 6000-9999 SF, Sidewalks
Roof	Architectural Style

Foundation                      Crawl Space

**School Information**

District                      West Ada School District  
Elementary                      Eagle Hills  
Middle                      Eagle Middle  
High                      Eagle

**Additional Information**

Date Listed                      September 17th, 2025  
Days on Market                      17  
HOA Fees                      \$350  
HOA Fees Freq.                      Annually  
Property Taxes                      \$1,158  
Tax Year                      2024  
Structures                      Storage Shed  
Office                      Powered-By  
Contact Info                      broker@powered-by.net

**Listing Details**

Listing Office                      Powered-By



IDX information is provided exclusively for consumers' personal, non-commercial use, and may not be used for any purpose other than to identify prospective properties consumers may be interested in purchasing. IMLS does not assume any liability for missing or inaccurate data. Information provided by IMLS is deemed reliable but not guaranteed.

Listing information last updated on October 15th, 2025 at 1:33pm MDT