

# \$839,000 - 4945 N Bolsena Ave, Meridian

MLS® #98961840

**\$839,000**

3 Bedroom, 3.00 Bathroom, 2,414 sqft  
Residential on 0.23 Acres

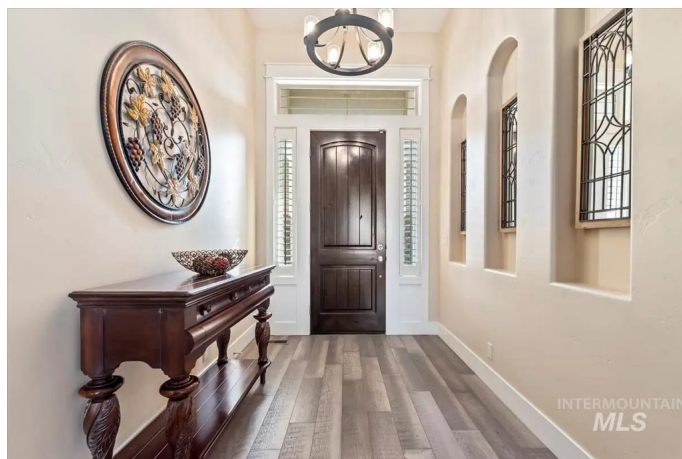
Bridgetower West, Meridian, ID

This semi-custom home has so many extras. It's rare to find another quality home quite like it. From the stand/sit desks to the file drawers disguised as drawers in the office to the whole house prewired entertainment system to the two-way fireplace shared by the primary bedroom and the primary spa-like bathroom to the oversized primary closet with a wall of built-ins to the dual climate zoned wine fridge incorporated into the stunning bar space. There is so much more! Where can you find a 45' deep by 15' wide true RV bay with a 2nd oversized 2 car garage, a 24-hour hot water, and a 24-hour clean air system? We haven't even mentioned the private & luxurious back yard & patio area w/a fire pit, sunshades, cooling misters for your comfort, watering systems, & beautiful views. You'll want to be in the outside living space more than the inside. Nestled in Bridgetower West & built by Hammett Homes in 2017, this home has been meticulously maintained by its only owners.

Built in 2017

## Essential Information

MLS® #	98961840
Price Per SQFT	\$348
Bedrooms	3
Bathrooms	3.00
Square Footage	2,414



Acres	0.23
Year Built	2017
Type	Residential
Sub-Type	Single Family Residence
Status	Active

### Community Information

Address	4945 N Bolsena Ave
Area	Meridian NW - 1030
Subdivision	Bridgetower West
City	Meridian
County	Ada
State	ID
Zip Code	83646
Builder	Hammett Homes

### Amenities

Utilities	Sewer Connected, Cable Connected, Broadband Internet
Parking Spaces	4
Parking	Attached, RV Access/Parking, Finished Driveway
# of Garages	4
Has Pool	Yes
Pool	Community
RV/Boat Parking	Yes
Golf Course	N

### Interior

Interior Features	Bath-Master, Bed-Master Main Level, Split Bedroom, Den/Office, Double Vanity, Walk-In Closet(s), Breakfast Bar, Pantry, Kitchen Island, Granite Counters
Appliances	Gas Water Heater, Dishwasher, Disposal, Double Oven, Microwave, Oven/Range Built-In, Refrigerator
Heating	Forced Air, Natural Gas
Cooling	Central Air
Fireplace	Yes
Fireplaces	Two, Gas
Stories	One
Primary On Main	Yes

### Exterior

Lot Description	10000 SF - .49 AC, Bus on City Route, R.V. Parking, Sidewalks, Auto Sprinkler System, Full Sprinkler System, Pressurized Irrigation Sprinkler System
Roof	Composition
Foundation	Crawl Space

### School Information

District	West Ada School District
Elementary	Pleasant View
Middle	Star
High	Owyhee

### Additional Information

Date Listed	September 17th, 2025
Days on Market	22
Zoning	R-4
HOA Fees	\$216
HOA Fees Freq.	Quarterly
Property Taxes	\$2,684
Tax Year	2024
Office	The Steinwald Group
Contact Info	eva@steinwaldgroup.com

### Listing Details

Listing Office	The Steinwald Group
----------------	---------------------



IDX information is provided exclusively for consumers' personal, non-commercial use, and may not be used for any purpose other than to identify prospective properties consumers may be interested in purchasing. IMLS does not assume any liability for missing or inaccurate data. Information provided by IMLS is deemed reliable but not guaranteed.

Listing information last updated on October 14th, 2025 at 6:03am MDT