

\$999,999 - 3353 S Eagle Brook Lane, Eagle

MLS® #98961813

\$999,999

3 Bedroom, 3.00 Bathroom, 2,497 sqft
Residential on 0.14 Acres

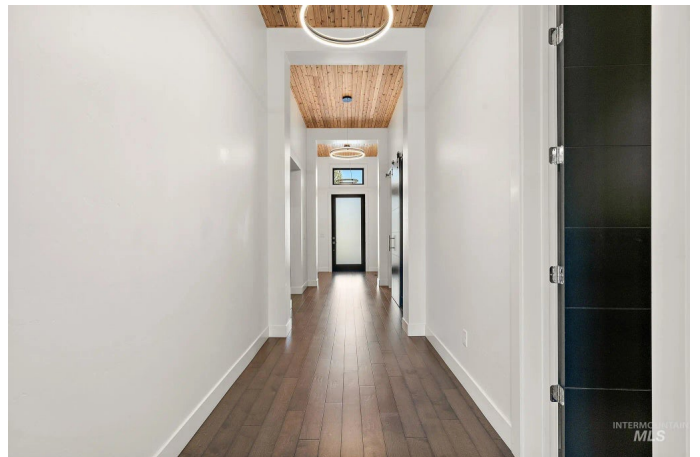
Lakemoor, Eagle, ID

OPEN HOUSE Saturday & Sunday Oct 18th - 19th from 12pm - 3pm. Welcome home to this extraordinarily special find in lovely Eagle, Idaho! Tucked into the quaint and private, serene gated community of Lakemoor, surrounded by trees, backyard overlooking meadow-like surroundings complete with a peaceful creek out back enjoyed by a variety of local birds, ducks and wildlife. Lakemoor is located in the heart of Eagle, just minutes to restaurants, shops, cafes, parks, golf courses, Green Belt and the famous Boise River. This stunning single level home features 10 foot ceilings, custom cabinetry, spacious island and incredible natural light. Fisher & Paykel appliances, built-in fridge, 6-burner gas range, walk-in pantry and extra deep sink overlooking the backyard green space and creek round out this tremendous kitchen space. Vibrant natural light spills into the primary w/resort-like en-suite bath. 2-car garage and a spacious mud room/utility round out this fabulous custom home with utility and style. Enjoy Lakemoor's waterways, walking paths, 2 pools and sports courts.

Built in 2021

Essential Information

MLS® #	98961813
Price Per SQFT	\$400
Bedrooms	3



Bathrooms	3.00
Square Footage	2,497
Acres	0.14
Year Built	2021
Type	Residential
Sub-Type	Single Family Residence
Status	Active

Community Information

Address	3353 S Eagle Brook Lane
Area	Eagle - 0900
Subdivision	Lakemoor
City	Eagle
County	Ada
State	ID
Zip Code	83616

Amenities

Utilities	Sewer Connected, Broadband Internet
Parking Spaces	2
Parking	Attached, Finished Driveway
# of Garages	2
Is Waterfront	Yes
Waterfront	Waterfront
Has Pool	Yes
Pool	Community
Golf Course	N
Virtual Tour	https://www.zillow.com/view-imx/6df94a13-d50a-46b5-8580-8b6c217504d3?wl=true&setAttribution=mls&initialViewType=pano

Interior

Interior Features	Bath-Master, Bed-Master Main Level, Great Room, Double Vanity
Appliances	Gas Water Heater, Tank Water Heater
Heating	Forced Air, Natural Gas
Cooling	Central Air
Fireplace	Yes
Fireplaces	One, Gas, Insert
Stories	One
Primary On Main	Yes

Exterior

Lot Description	Standard Lot 6000-9999 SF, Tennis Court, Cul-De-Sac, Auto Sprinkler System, Full Sprinkler System, Pressurized Irrigation Sprinkler System, Irrigation Sprinkler System
Roof	Composition
Foundation	Crawl Space

School Information

District	West Ada School District
Elementary	Andrus
Middle	Eagle Middle
High	Eagle

Additional Information

Date Listed	September 16th, 2025
Days on Market	27
HOA Fees	\$520
HOA Fees Freq.	Quarterly
Property Taxes	\$2,986
Tax Year	2024
Office	Silvercreek Realty Group
Contact Info	broker@silvercreekrealty.com

Listing Details

Listing Office	Silvercreek Realty Group
----------------	--------------------------



IDX information is provided exclusively for consumers' personal, non-commercial use, and may not be used for any purpose other than to identify prospective properties consumers may be interested in purchasing. IMLS does not assume any liability for missing or inaccurate data. Information provided by IMLS is deemed reliable but not guaranteed.

Listing information last updated on October 15th, 2025 at 1:18am MDT