

\$497,990 - 4259 E Hillsong St, Meridian

MLS® #98961660

\$497,990

4 Bedroom, 3.00 Bathroom, 2,110 sqft

Residential on 0.09 Acres

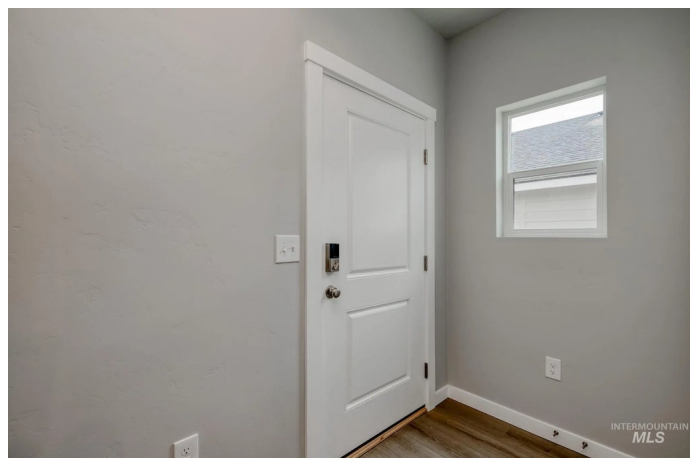
Centerville, Meridian, ID

Fall in Love with Low Rates! Promotional rate as low as 2.99%. Ask a Sales Specialist for details! Embrace the comforts of a brand new home in Meridian, Idaho. A home with all the comforts you could need awaits you at the Atwood 2110! The kitchen boasts upgraded finishes, including stainless steel appliances, a gas range, and stylish solid surface countertops. Upstairs, you will find 3 bedrooms and an additional centralized loft space - perfect for creating your own retreat. The primary suite includes an ample walk-in closet and a grand en suite bath with a dual vanity. The home features expansive windows that let in natural light, creating a bright and welcoming atmosphere throughout. With thoughtful design and generous living space, there's room for all your needs, whether you're entertaining guests or enjoying quiet moments at home. Photos are similar. All selections are subject to change without notice, please call to verify.

Built in 2025

Essential Information

MLS® #	98961660
Price Per SQFT	\$236
Bedrooms	4
Bathrooms	3.00
Square Footage	2,110
Acres	0.09



Year Built	2025
Type	Residential
Sub-Type	Single Family Residence
Status	Active

Community Information

Address	4259 E Hillsong St
Area	Boise SW-Meridian - 0550
Subdivision	Centerville
City	Meridian
County	Ada
State	ID
Zip Code	83642
Builder	CBH Homes

Amenities

Utilities	Sewer Connected
Parking Spaces	2
Parking	Attached
# of Garages	2
Golf Course	N
Virtual Tour	https://my.matterport.com/show/?m=497kga3tG6L&mls=1

Interior

Interior Features	Bath-Master, Double Vanity, Loft, Breakfast Bar, Pantry, Kitchen Island, Solid Surface Counters
Appliances	Gas Water Heater, Dishwasher, Disposal, Microwave, Oven/Range Freestanding, Gas Range
Heating	Forced Air, Natural Gas
Cooling	Central Air
Stories	Two

Exterior

Lot Description	Sm Lot 5999 SF, Sidewalks, Corner Lot, Auto Sprinkler System, Partial Sprinkler System
Roof	Composition

School Information

District	West Ada School District
Elementary	Hillsdale

Middle	Lake Hazel
High	Mountain View

Additional Information

Date Listed	September 15th, 2025
Days on Market	3
HOA Fees	\$650
HOA Fees Freq.	Annually
New Construction	Yes
Tax Year	2025
Office	CBH Sales & Marketing Inc
Contact Info	tarak@cbhhomes.com

Listing Details

Listing Office	CBH Sales & Marketing Inc
----------------	---------------------------



IDX information is provided exclusively for consumers' personal, non-commercial use, and may not be used for any purpose other than to identify prospective properties consumers may be interested in purchasing. IMLS does not assume any liability for missing or inaccurate data. Information provided by IMLS is deemed reliable but not guaranteed.

Listing information last updated on October 13th, 2025 at 1:33am MDT