

\$475,990 - 858 N Mirror Creek Way, Meridian

MLS® #98961641

\$475,990

4 Bedroom, 2.00 Bathroom, 1,860 sqft

Residential on 0.15 Acres

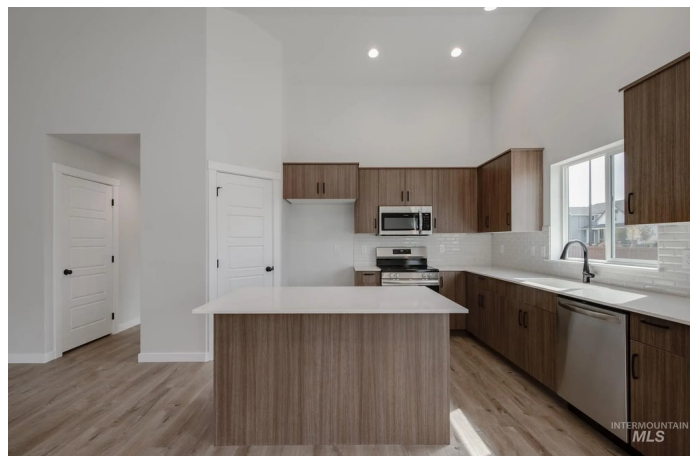
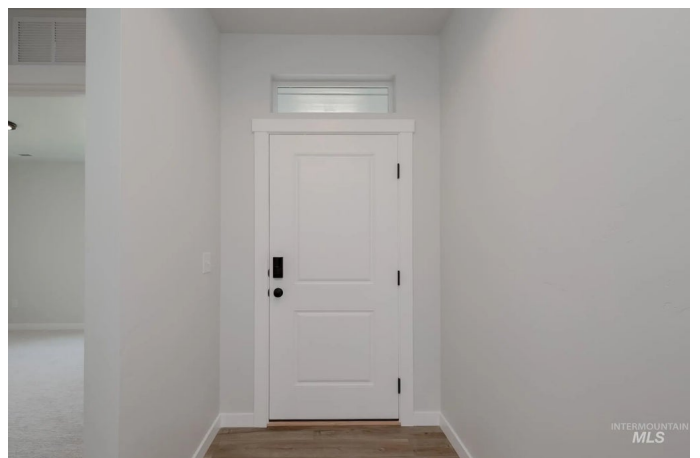
Dutton Place, Meridian, ID

Fall in Love with Low Rates! Promotional rate as low as 2.99%. Ask a Sales Specialist for details! Enter into a brand new home in Meridian, Idaho and enjoy its benefits and stress free living! The Willow 1860's single level space is smartly laid out, boasting two bedrooms situated at the front of the home. To entertain or for personal relaxation, escape into the spacious vaulted great room and dining room that open onto a back patio. Natural light cascades through the windows, adding an illuminated touch to the vaulted ceiling. The kitchen comes with stainless steel appliances and stylish solid surface countertops, adding both functionality and aesthetics to the kitchen. Retreat to the primary suite for restful nights, complete with a roomy en suite bathroom, dual vanities, a stand-up shower, and a walk-in closet. Photos are of the actual home!

Built in 2025

Essential Information

MLS® #	98961641
Price Per SQFT	\$256
Bedrooms	4
Bathrooms	2.00
Square Footage	1,860
Acres	0.15
Year Built	2025
Type	Residential



Sub-Type	Single Family Residence
Status	Active

Community Information

Address	858 N Mirror Creek Way
Area	Meridian NW - 1030
Subdivision	Dutton Place
City	Meridian
County	Ada
State	ID
Zip Code	83642
Builder	CBH Homes

Amenities

Utilities	Sewer Connected
Parking Spaces	2
Parking	Attached
# of Garages	2
Golf Course	N
Virtual Tour	https://my.matterport.com/show/?m=S6mXGSyezjg&mls=1

Interior

Interior Features	Bath-Master, Bed-Master Main Level, Split Bedroom, Double Vanity, Pantry, Kitchen Island, Solid Surface Counters
Appliances	Gas Water Heater, Dishwasher, Disposal, Microwave, Oven/Range Freestanding
Heating	Forced Air, Natural Gas
Cooling	Central Air
Stories	One
Primary On Main	Yes

Exterior

Lot Description	Standard Lot 6000-9999 SF, Sidewalks, Auto Sprinkler System, Full Sprinkler System, Pressurized Irrigation Sprinkler System
Roof	Composition

School Information

District	West Ada School District
Elementary	Chaparral
Middle	Meridian Middle

High Meridian

Additional Information

Date Listed September 15th, 2025
Days on Market 3
HOA Fees \$680
HOA Fees Freq. Annually
New Construction Yes
Tax Year 2025
Office CBH Sales & Marketing Inc
Contact Info tarak@cbhhomes.com

Listing Details

Listing Office CBH Sales & Marketing Inc



IDX information is provided exclusively for consumers' personal, non-commercial use, and may not be used for any purpose other than to identify prospective properties consumers may be interested in purchasing. IMLS does not assume any liability for missing or inaccurate data. Information provided by IMLS is deemed reliable but not guaranteed.

Listing information last updated on October 13th, 2025 at 1:33am MDT