

# \$714,800 - 7012 S Palatino Ave., Meridian

MLS® #98961623

**\$714,800**

4 Bedroom, 3.00 Bathroom, 2,170 sqft  
Residential on 0.15 Acres

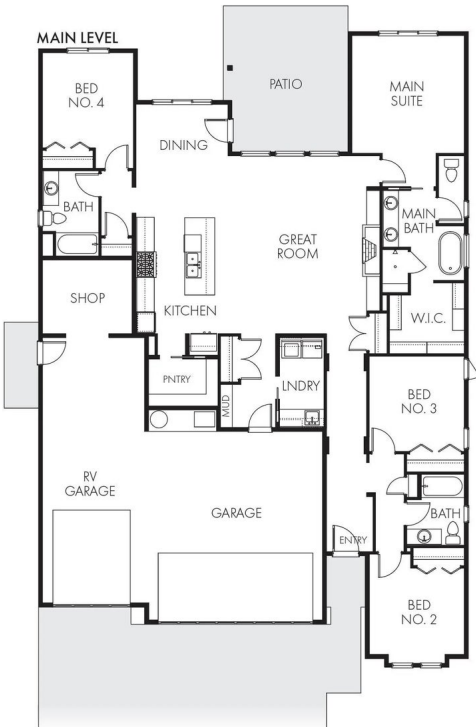
Skybreak, Meridian, ID

The GREYHAWK MODEL| Blackrock Homes. All new plan featuring 31' deep RV/Boat Bay with 9' x 11' door + additional shop/work area. East facing backyard. Apart of the Pinnacle Collection at Skybreak- Enjoy COMMUNITY POOL, pickle ball courts, playground + community dog parks! Upgraded finishes include custom cabinets, all quartz countertops, hardwood (lvp), upgraded trim detail including ceiling beams in living room, SS appliances including built-in 5 burner industrial gas range, built in Bosch oven, microwave & dishwasher. Walk-in butler's pantry + tons of additional storage throughout. Light & airy floor plan w/lots of natural light & cozy fireplace. Tile floors in laundry, secondary & primary baths. \* photos similar but not of actual home. actual seletions are Medi package.

Built in 2025

## Essential Information

|                |             |
|----------------|-------------|
| MLS® #         | 98961623    |
| Price Per SQFT | \$329       |
| Bedrooms       | 4           |
| Bathrooms      | 3.00        |
| Square Footage | 2,170       |
| Acres          | 0.15        |
| Year Built     | 2025        |
| Type           | Residential |



|          |                         |
|----------|-------------------------|
| Sub-Type | Single Family Residence |
| Status   | Active                  |

### Community Information

|             |                      |
|-------------|----------------------|
| Address     | 7012 S Palatino Ave. |
| Area        | Meridian SE - 1000   |
| Subdivision | Skybreak             |
| City        | Meridian             |
| County      | Ada                  |
| State       | ID                   |
| Zip Code    | 83642                |
| Builder     | Blackrock Homes      |

### Amenities

|                 |   |
|-----------------|---|
| Utilities       | Sewer Connected, Cable Connected, Broadband Internet                  |
| Parking Spaces  | 3   |
| Parking         | Attached, RV Access/Parking, Finished Driveway                        |
| # of Garages    | 3   |
| Has Pool        | Yes   |
| Pool            | Community, Pool   |
| RV/Boat Parking | Yes   |
| Golf Course     | N   |
| Virtual Tour    | <a href="https://vimeo.com/786980980">https://vimeo.com/786980980</a> |

### Interior

|                   |  |
|-------------------|--|
| Interior Features | Bath-Master, Split Bedroom, Great Room, Double Vanity, Walk-In Closet(s), Breakfast Bar, Pantry, Kitchen Island, Quartz Counters |
| Appliances        | Gas Water Heater, Dishwasher, Disposal, Microwave, Oven/Range Built-In, Gas Range  |
| Heating           | Forced Air, Natural Gas  |
| Cooling           | Central Air  |
| Fireplace         | Yes  |
| Fireplaces        | One, Gas   |
| Stories           | One  |
| Primary On Main   | Yes  |

### Exterior

|                 |   |
|-----------------|---|
| Lot Description | Standard Lot 6000-9999 SF, Sidewalks, Corner Lot, Auto Sprinkler System, Full Sprinkler System, Pressurized Irrigation Sprinkler System |
|-----------------|---|

|            |                                  |
|------------|----------------------------------|
| Roof       | Composition, Architectural Style |
| Foundation | Crawl Space                      |

### School Information

|            |                          |
|------------|--------------------------|
| District   | West Ada School District |
| Elementary | Hillsdale                |
| Middle     | Lake Hazel               |
| High       | Mountain View            |

### Additional Information

|                  |                           |
|------------------|---------------------------|
| Date Listed      | September 14th, 2025      |
| Days on Market   | 3                         |
| HOA Fees         | \$204                     |
| HOA Fees Freq.   | Quarterly                 |
| New Construction | Yes                       |
| Tax Year         | 2024                      |
| Office           | O2 Real Estate Group      |
| Contact Info     | patm@o2marketinggroup.com |

### Listing Details

|                |                      |
|----------------|----------------------|
| Listing Office | O2 Real Estate Group |
|----------------|----------------------|



IDX information is provided exclusively for consumers' personal, non-commercial use, and may not be used for any purpose other than to identify prospective properties consumers may be interested in purchasing. IMLS does not assume any liability for missing or inaccurate data. Information provided by IMLS is deemed reliable but not guaranteed.

Listing information last updated on October 13th, 2025 at 1:48am MDT