

# \$669,900 - 7013 S Tindaris Ave, Meridian

MLS® #98961622

**\$669,900**

4 Bedroom, 3.00 Bathroom, 2,061 sqft  
Residential on 0.15 Acres

Skybreak, Meridian, ID

The FOXFIRE MODEL| Blackrock Homes. All new plan featuring 30' deep RV/Boat Bay with 9' x 11' door. Located on larger end homesite w/larger yards area. Apart of the Pinnacle Collection at Skybreak- Enjoy COMMUNITY POOL, pickle ball courts, playground + community dog parks! Upgraded finishes include custom cabinets, all quartz countertops, hardwood (lvp), upgraded trim detail including ceiling beams in living room, SS appliances including built-in 5 burner industrial gas range, built in oven, microwave & dishwasher. Walk-in butler's pantry + tons of additional storage throughout. Light & airy floor plan w/lots of natural light & cozy fireplace. Tile floors in laundry, secondary & primary baths. \*photos similar but not of actual home. Actual selections to be RH package.

Built in 2025

## Essential Information

|                |                         |
|----------------|-------------------------|
| MLS® #         | 98961622                |
| Price Per SQFT | \$325                   |
| Bedrooms       | 4                       |
| Bathrooms      | 3.00                    |
| Square Footage | 2,061                   |
| Acres          | 0.15                    |
| Year Built     | 2025                    |
| Type           | Residential             |
| Sub-Type       | Single Family Residence |



|        |        |
|--------|--------|
| Status | Active |
|--------|--------|

### Community Information

|             |                     |
|-------------|---------------------|
| Address     | 7013 S Tindaris Ave |
| Area        | Meridian SE - 1000  |
| Subdivision | Skybreak            |
| City        | Meridian            |
| County      | Ada                 |
| State       | ID                  |
| Zip Code    | 83642               |
| Builder     | Blackrock Homes     |

### Amenities

|                 |   |
|-----------------|---|
| Utilities       | Sewer Connected, Cable Connected, Broadband Internet                  |
| Parking Spaces  | 3   |
| Parking         | Attached, RV Access/Parking, Finished Driveway                        |
| # of Garages    | 3   |
| Has Pool        | Yes   |
| Pool            | Community, Pool   |
| RV/Boat Parking | Yes   |
| Golf Course     | N   |
| Virtual Tour    | <a href="https://vimeo.com/786980980">https://vimeo.com/786980980</a> |

### Interior

|                   |  |
|-------------------|--|
| Interior Features | Bath-Master, Split Bedroom, Great Room, Double Vanity, Walk-In Closet(s), Breakfast Bar, Pantry, Kitchen Island, Quartz Counters |
| Appliances        | Gas Water Heater, Dishwasher, Disposal, Microwave, Oven/Range Built-In, Gas Range  |
| Heating           | Forced Air, Natural Gas  |
| Cooling           | Central Air  |
| Fireplace         | Yes  |
| Fireplaces        | One, Gas   |
| Stories           | One  |
| Primary On Main   | Yes  |

### Exterior

|                 |   |
|-----------------|---|
| Lot Description | Standard Lot 6000-9999 SF, Sidewalks, Corner Lot, Auto Sprinkler System, Full Sprinkler System, Pressurized Irrigation Sprinkler System |
| Roof            | Composition, Architectural Style  |

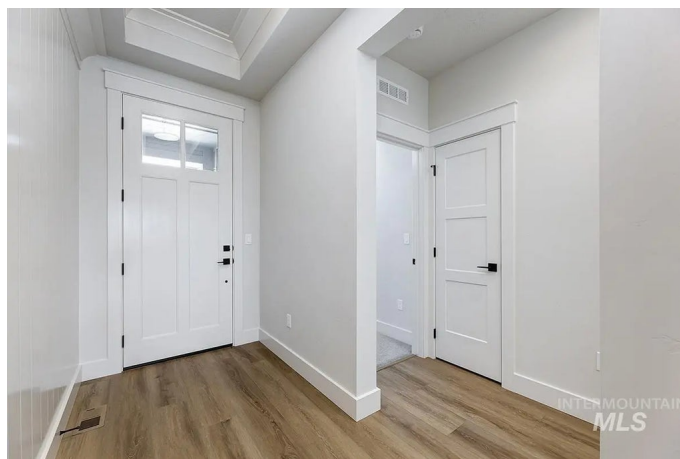
Foundation                      Crawl Space

## School Information

District                      West Ada School District  
Elementary                      Hillsdale  
Middle                      Lake Hazel  
High                      Mountain View

## Additional Information

Date Listed                      September 14th, 2025  
Days on Market                      3  
HOA Fees                      \$204  
HOA Fees Freq.                      Quarterly  
New Construction                      Yes  
Tax Year                      2024  
Office                      O2 Real Estate Group  
Contact Info                      patm@o2marketinggroup.com



## Listing Details

Listing Office                      O2 Real Estate Group



IDX information is provided exclusively for consumers' personal, non-commercial use, and may not be used for any purpose other than to identify prospective properties consumers may be interested in purchasing. IMLS does not assume any liability for missing or inaccurate data. Information provided by IMLS is deemed reliable but not guaranteed.

Listing information last updated on October 13th, 2025 at 1:33am MDT