

# \$464,900 - 4338 S Choctaw Way, Boise

MLS® #98961516

**\$464,900**

3 Bedroom, 2.00 Bathroom, 1,648 sqft  
Residential on 0.19 Acres

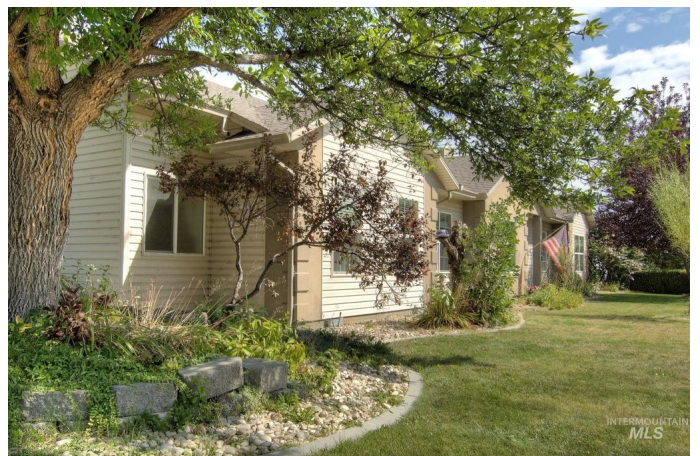
Sunset Rim Sub, Boise, ID

Beautifully maintained custom Wes Miller home in desirable Sunset Rim! Single-level 3 bed, 2 bath, 1,648 sq ft floorplan features vaulted great room with dramatic floor-to-ceiling stone fireplace & wood stove, perfect for cozy evenings and energy savings. Spacious kitchen with hickory cabinets, pantry, breakfast bar & tile flooring. Secluded master suite with walk-in closet, jetted tub, & dual vanity. Enjoy year-round entertaining on the oversized covered patio that overlooks a landscaped yard with auto sprinklers, garden beds, & matching storage shed. Oversized garage with epoxy floors, shelving & workbench plus true RV parking. Quality 2x6 construction, 9â€™™ walls, surround-sound wiring. Quiet cul-de-sac, no HOA/CCRâ€™™s, close to schools, shopping & freeway. A thoughtfully designed home with spaces to gather, relax, and grow.

Built in 2003

## Essential Information

MLS® #	98961516
Price Per SQFT	\$282
Bedrooms	3
Bathrooms	2.00
Square Footage	1,648
Acres	0.19
Year Built	2003
Type	Residential



Sub-Type	Single Family Residence
Status	Active

### Community Information

Address	4338 S Choctaw Way
Area	Boise South - 0500
Subdivision	Sunset Rim Sub
City	Boise
County	Ada
State	ID
Zip Code	83709
Builder	Wes Miller

### Amenities

Utilities	Sewer Connected
Parking Spaces	2
Parking	Attached, RV Access/Parking
# of Garages	2
RV/Boat Parking	Yes
Golf Course	N

### Interior

Interior Features	Bath-Master, Split Bedroom, Den/Office, Family Room, Walk-In Closet(s), Breakfast Bar, Laminate Counters
Appliances	Dishwasher, Disposal, Refrigerator, Water Softener Owned
Heating	Forced Air, Wood
Cooling	Central Air
Fireplace	Yes
Fireplaces	Wood Burning Stove
Stories	One
Primary On Main	Yes

### Exterior

Lot Description	Standard Lot 6000-9999 SF, R.V. Parking, Sidewalks, Corner Lot, Cul-De-Sac, Auto Sprinkler System, Manual Sprinkler System
Roof	Architectural Style
Foundation	Crawl Space

### School Information

District	Boise School District #1
Elementary	Amity
Middle	West Boise Jr
High	Borah

### **Additional Information**

Date Listed	September 12th, 2025
Days on Market	17
Property Taxes	\$1,847
Tax Year	2024
Structures	Storage Shed
Office	Kelly Right Real Estate-Idaho
Contact Info	jkelly@kellyright.com

### **Listing Details**

Listing Office	Kelly Right Real Estate-Idaho
----------------	-------------------------------



IDX information is provided exclusively for consumers' personal, non-commercial use, and may not be used for any purpose other than to identify prospective properties consumers may be interested in purchasing. IMLS does not assume any liability for missing or inaccurate data. Information provided by IMLS is deemed reliable but not guaranteed.

Listing information last updated on October 14th, 2025 at 3:48pm MDT