

# \$469,900 - 5820 W Oreana Dr, Boise

MLS® #98961426

**\$469,900**

4 Bedroom, 2.00 Bathroom, 2,593 sqft

Residential on 0.22 Acres

Owyhee View Sub, Boise, ID

Located in the heart of the highly sought-after Boise Bench, this spacious midcentury home sits on an oversized .22-acre lot with endless potential! Offering 4 bedrooms plus an office and 3 large living areas, there's room for everyone to spread out. The home features mature trees, a large, enclosed patio, and timeless character just waiting for its new owner to make it shine. Enjoy unbeatable convenience—just minutes to downtown Boise, the Greenbelt, shopping, dining, and quick interstate access. Don't miss this incredible opportunity to own a Bench property with size, charm, and location all in one!

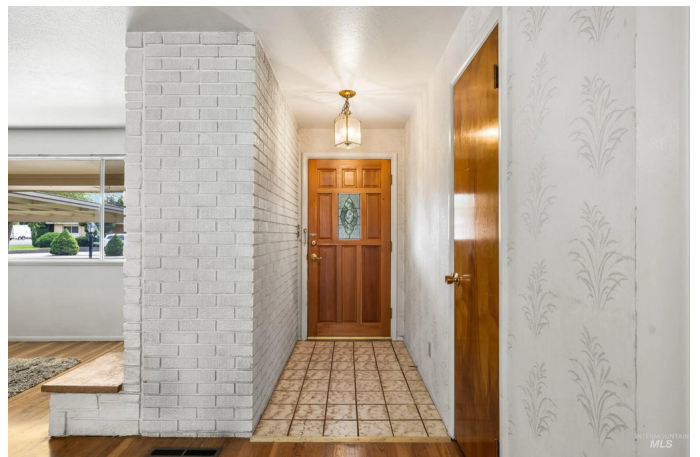
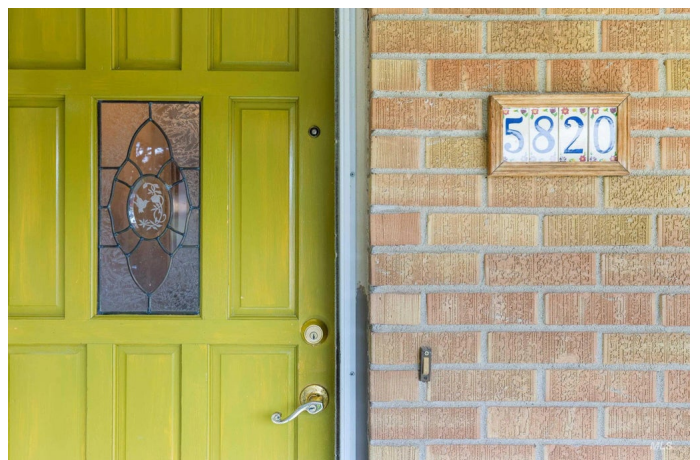
Built in 1962

## Essential Information

MLS® #	98961426
Price Per SQFT	\$181
Bedrooms	4
Bathrooms	2.00
Square Footage	2,593
Acres	0.22
Year Built	1962
Type	Residential
Sub-Type	Single Family Residence
Status	Active

## Community Information

Address 5820 W Oreana Dr



Area	Boise Bench - 0400
Subdivision	Owyhee View Sub
City	Boise
County	Ada
State	ID
Zip Code	83709

### **Amenities**

Utilities	Sewer Connected
Parking Spaces	2
Parking	Carport
Golf Course	N

### **Interior**

Interior Features	Bed-Master Main Level, Den/Office, Laminate Counters
Appliances	Dishwasher, Oven/Range Freestanding, Refrigerator
Heating	Baseboard, Forced Air
Cooling	Central Air
Fireplace	Yes
Fireplaces	Three or More, Wood Burning Stove
Stories	Single with Below Grade
Primary On Main	Yes

### **Exterior**

Lot Description	Standard Lot 6000-9999 SF, Sidewalks
Roof	Composition

### **School Information**

District	Boise School District #1
Elementary	Hillcrest
Middle	South (Boise)
High	Borah

### **Additional Information**

Date Listed	September 12th, 2025
Days on Market	20
Property Taxes	\$3,278
Tax Year	2024
Office	Boise Premier Real Estate

Contact Info      [brett@boisepremier.com](mailto:brett@boisepremier.com)

## **Listing Details**

Listing Office      Boise Premier Real Estate



IDX information is provided exclusively for consumers' personal, non-commercial use, and may not be used for any purpose other than to identify prospective properties consumers may be interested in purchasing. IMLS does not assume any liability for missing or inaccurate data. Information provided by IMLS is deemed reliable but not guaranteed.

Listing information last updated on October 15th, 2025 at 6:33am MDT