

\$729,900 - 1234 E Lone Shore Dr, Eagle

MLS® #98961140

\$729,900

3 Bedroom, 3.00 Bathroom, 2,055 sqft
Residential on 0.08 Acres

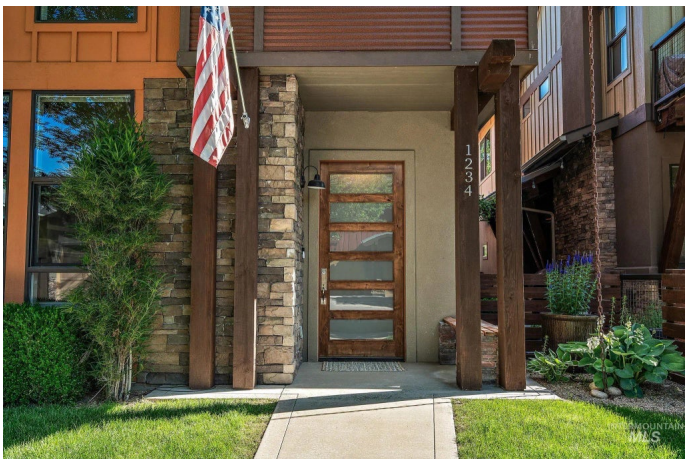
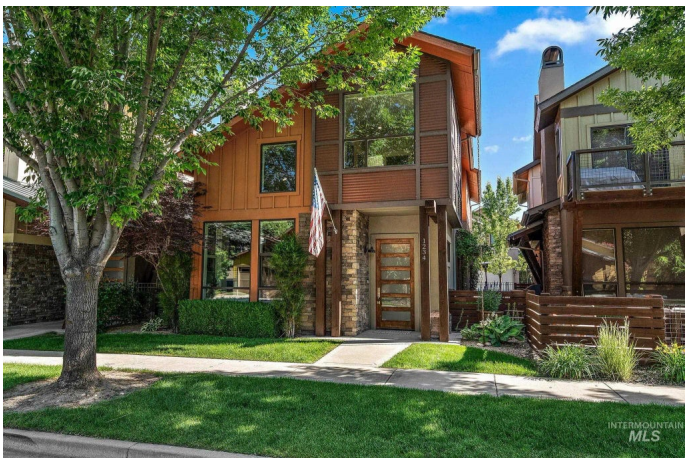
River District, Eagle, ID

Great opportunity in the sought-after River District! This updated 3-bed, 2-bath carriage-style home with an office offers long-term value in a prime location near the Boise River and greenbelt. Residents enjoy exclusive access to the community pool, clubhouse, and private fishing pond. The open layout features soaring ceilings, large windows, and a modern kitchen with quartz countertops, subway tile backsplash, and a walk-in pantry. The great room with gas fireplace opens to a covered patio and private courtyardâ€”perfect for indoor/outdoor living. Upstairs, the primary suite includes a tiled shower, soaking tub, dual vanities, and walk-in closet. Two additional bedrooms and a bright office/bonus room add flexibility. Recent updates include fresh interior paint, LVP flooring, and new carpet. HOA-maintained landscaping, up/down blinds throughout, and an extra-deep garage with alley access add convenience. Close to parks, shopping, and diningâ€”ideal for a low-maintenance lifestyle or investment property.

Built in 2015

Essential Information

MLS® #	98961140
Price Per SQFT	\$355
Bedrooms	3
Bathrooms	3.00



Square Footage	2,055
Acres	0.08
Year Built	2015
Type	Residential
Sub-Type	Single Family Residence
Status	Active

Community Information

Address	1234 E Lone Shore Dr
Area	Eagle - 0900
Subdivision	River District
City	Eagle
County	Ada
State	ID
Zip Code	83616
Builder	RSI Construction

Amenities

Utilities	Sewer Connected
Parking Spaces	2
Parking	Attached, Alley Access
# of Garages	2
Has Pool	Yes
Pool	Community, In Ground, Pool
Golf Course	N
Virtual Tour	https://listings.snaphouse.io/sites/mnbwwaa/unbranded

Interior

Interior Features	Bath-Master, Den/Office, Great Room, Central Vacuum Plumbed, Breakfast Bar, Pantry, Kitchen Island, Quartz Counters
Appliances	Gas Water Heater, Dishwasher, Disposal, Microwave, Oven/Range Freestanding, Refrigerator, Gas Range
Heating	Forced Air, Natural Gas
Cooling	Central Air
Fireplace	Yes
Fireplaces	One, Gas
Stories	Two

Exterior

Lot Description	Sm Lot 5999 SF, Irrigation Available, Sidewalks, Auto Sprinkler System, Drip Sprinkler System, Full Sprinkler System
Roof	Composition
Foundation	Slab

School Information

District	West Ada School District
Elementary	Seven Oaks
Middle	Eagle Middle
High	Eagle

Additional Information

Date Listed	September 10th, 2025
Days on Market	3
HOA Fees	\$440
HOA Fees Freq.	Quarterly
Property Taxes	\$2,340
Tax Year	2024
Office	Silvercreek Realty Group
Contact Info	broker@silvercreekrealty.com

Listing Details

Listing Office	Silvercreek Realty Group
----------------	--------------------------



IDX information is provided exclusively for consumers' personal, non-commercial use, and may not be used for any purpose other than to identify prospective properties consumers may be interested in purchasing. IMLS does not assume any liability for missing or inaccurate data. Information provided by IMLS is deemed reliable but not guaranteed.

Listing information last updated on October 13th, 2025 at 3:48am MDT