

\$999,900 - 7131 E Chicken Hawk Loop, Nampa

MLS® #98961108

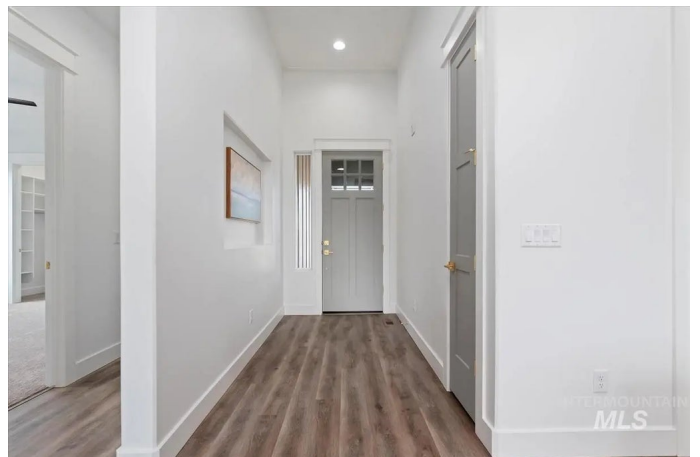
\$999,900

3 Bedroom, 4.00 Bathroom, 2,999 sqft

Residential on 0.36 Acres

Osprey Estates, Nampa, ID

Open House Friday, Saturday & Sunday from 1-4pm. Introducing the new & improved "Teton" our most popular 3.5 bath home by Sunrise Homes. A true fan favorite of past years is now better than ever w/a bigger garage, 53x18' RV & 33x22' 2car. This new version comes w/add'l space in the master closet, laundry room, pantry, extended patio & sliding glass doors out the bonus room. Perfect for entertaining & overall functionality. Sunrise is known for capturing natural light inside of the home & this home is the pinnacle of that mission. Perfect plan for extended family & guests w/generous bedrom sizes, each w/their own bathroom. Everyone will appreciate the architectural lighted ceiling thruout the home & stain grade beams in the living room that are complemented by floor to ceiling stone fireplace. Fully insulated garage w/30amp, conditioned crawl space, full gutters & plenty of storage inside the home. Builder stands behind his work by offering an additional 2-10 warranty, come see for yourself why Sunrise homeowners remain happy long after the home has closed.



Built in 2025

Essential Information

MLS® # 98961108

Price Per SQFT \$333

Bedrooms 3

Bathrooms	4.00
Square Footage	2,999
Acres	0.36
Year Built	2025
Type	Residential
Sub-Type	Single Family Residence
Status	Active

Community Information

Address	7131 E Chicken Hawk Loop
Area	Nampa South (86) - 1260
Subdivision	Osprey Estates
City	Nampa
County	Canyon
State	ID
Zip Code	83686
Builder	Sunrise Homes of Idaho

Amenities

Utilities	Sewer Connected, Cable Connected
Parking Spaces	4
Parking	Attached, RV Access/Parking, Finished Driveway
# of Garages	4
RV/Boat Parking	Yes
Golf Course	N
Virtual Tour	https://unbranded.youriguide.com/7131_e_chicken_hawk_loop_nampa_id/

Interior

Interior Features	Bath-Master, Bed-Master Main Level, Split Bedroom, Den/Office, Double Vanity, Walk-In Closet(s), Breakfast Bar, Pantry, Kitchen Island, Solid Surface Counters
Appliances	Gas Water Heater, Dishwasher, Disposal, Double Oven, Microwave, Oven/Range Built-In, Gas Range
Heating	Forced Air, Natural Gas
Cooling	Central Air
Fireplace	Yes
Fireplaces	One, Gas
Stories	One

Primary On Main Yes

Exterior

Lot Description 10000 SF - .49 AC, Sidewalks, Auto Sprinkler System, Full Sprinkler System, Pressurized Irrigation Sprinkler System

Roof Composition, Architectural Style

Foundation Crawl Space

School Information

District Nampa School District #131

Elementary Ronald Reagan

Middle East Valley Mid

High Columbia

Additional Information

Date Listed September 10th, 2025

Days on Market 19

HOA Fees \$725

HOA Fees Freq. Annually

New Construction Yes

Tax Year 2024

Office Silvercreek Realty Group

Contact Info broker@silvercreekrealty.com

Listing Details

Listing Office Silvercreek Realty Group



IDX information is provided exclusively for consumers' personal, non-commercial use, and may not be used for any purpose other than to identify prospective properties consumers may be interested in purchasing. IMLS does not assume any liability for missing or inaccurate data. Information provided by IMLS is deemed reliable but not guaranteed.

Listing information last updated on October 14th, 2025 at 1:33pm MDT