

\$394,995 - 11451 W Tempe, Star

MLS® #98961106

\$394,995

3 Bedroom, 2.00 Bathroom, 1,485 sqft
Residential on 0.14 Acres

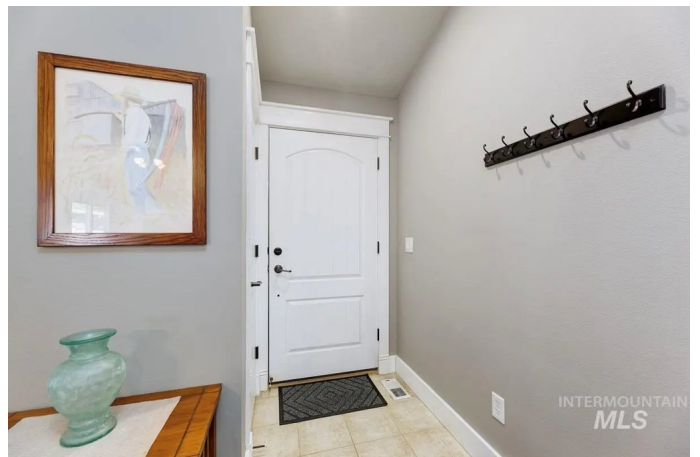
Tempe Park, Star, ID

Need RV Parking and a low maintenance home? Are you looking for a quiet retreat and a walkable lifestyle? Nestled on a peaceful, tree-lined lane that ends in a private cul-de-sac, this charming patio home offers the perfect blend of privacy and convenience. With no rear neighbors and friendly surroundings, you'll enjoy a serene setting just a short stroll from downtown Star's shops, restaurants, and community events. Inside, the smartly designed floor plan features a spacious kitchen with abundant cabinetry, a pantry, and seamless flow into the living area. A cozy fireplace creates a warm, inviting centerpiece for relaxing evenings. Built by renowned Asin Homes, this quality-crafted property has been lovingly maintained by its meticulous owner and features a newer HVAC system for added comfort. Combining low-maintenance living with an unbeatable location, this is where charm, community, and comfort come together. 2 RV parking spaces included in the community RV Storage lot.

Built in 2006

Essential Information

MLS® #	98961106
Price Per SQFT	\$266
Bedrooms	3
Bathrooms	2.00
Square Footage	1,485



Acres	0.14
Year Built	2006
Type	Residential
Sub-Type	Single Family Residence
Status	Active

Community Information

Address	11451 W Tempe
Area	Star - 0950
Subdivision	Tempe Park
City	Star
County	Ada
State	ID
Zip Code	83669

Amenities

Utilities	Sewer Connected, Cable Connected
Parking Spaces	2
Parking	RV/Boat, Attached, RV Access/Parking
# of Garages	2
RV/Boat Parking	Yes
Golf Course	N
Virtual Tour	https://my.matterport.com/show/?m=6Q6giDxtqMB

Interior

Interior Features	Bath-Master, Bed-Master Main Level, Split Bedroom, Den/Office, Double Vanity, Walk-In Closet(s), Pantry, Kitchen Island
Appliances	Gas Water Heater, Dishwasher, Oven/Range Freestanding
Heating	Forced Air, Natural Gas
Cooling	Central Air
Fireplace	Yes
Fireplaces	One, Gas
Stories	One
Primary On Main	Yes

Exterior

Lot Description	Standard Lot 6000-9999 SF, Auto Sprinkler System, Full Sprinkler System
Roof	Architectural Style

School Information

District	West Ada School District
Elementary	Star
Middle	Star
High	Owyhee

Additional Information

Date Listed	September 10th, 2025
Days on Market	17
HOA Fees	\$100
HOA Fees Freq.	Quarterly
Property Taxes	\$967
Tax Year	2024
Structures	Storage Shed
Office	Mountain Realty
Contact Info	pdoughty@idahomountainrealty.com

Listing Details

Listing Office	Mountain Realty
----------------	-----------------



IDX information is provided exclusively for consumers' personal, non-commercial use, and may not be used for any purpose other than to identify prospective properties consumers may be interested in purchasing. IMLS does not assume any liability for missing or inaccurate data. Information provided by IMLS is deemed reliable but not guaranteed.

Listing information last updated on October 15th, 2025 at 9:49am MDT