

\$939,900 - 92 W Horizon Dr, Boise

MLS® #98960954

\$939,900

3 Bedroom, 2.00 Bathroom, 2,265 sqft

Residential on 0.29 Acres

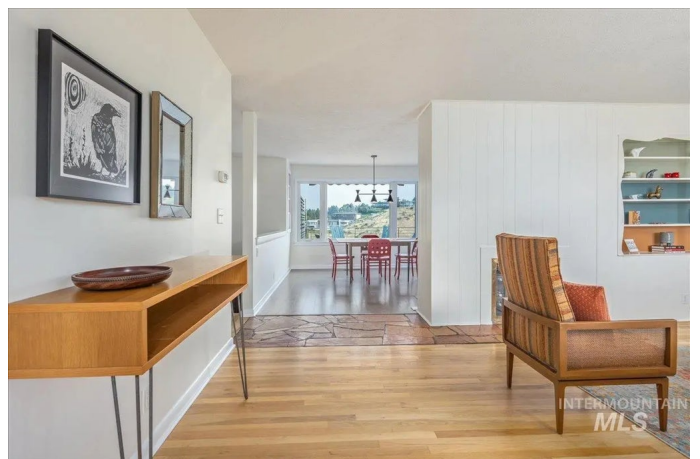
Horizon View, Boise, ID

Welcome home to this North End mid-century ranch with 360-degree views of downtown Boise, the Owyhees, and Shafer Butte. This all-brick home sits in the lower Foothills, minutes from downtown, located on a friendly cul-de-sac that is one of Boise's best kept secrets! Thoughtfully updated, this home has modern upgrades without sacrificing the midcentury vibe. Remodeled bathrooms, kitchen. expansive upper-level wrap-around Trex deck with covered dining areas. Original features include restored blonde oak floors, a local quarry stone hearth, and a double-sided fireplace in the living and dining rooms. You appreciate the main level living and walk out basement. Too many features to mention. Come see to believe. Don't miss out on this rare find!

Built in 1957

Essential Information

MLS® #	98960954
Price Per SQFT	\$415
Bedrooms	3
Bathrooms	2.00
Square Footage	2,265
Acres	0.29
Year Built	1957
Type	Residential
Sub-Type	Single Family Residence



Status	Active
--------	--------

Community Information

Address	92 W Horizon Dr
Area	Boise North - 0100
Subdivision	Horizon View
City	Boise
County	Ada
State	ID
Zip Code	83702

Amenities

Utilities	Sewer Connected
Parking Spaces	1
Parking	Attached, Finished Driveway
# of Garages	1
View	Yes
Golf Course	N

Interior

Interior Features	Bed-Master Main Level, Family Room, Central Vacuum Plumbed, Walk-In Closet(s), Kitchen Island, Quartz Counters
Appliances	Gas Water Heater, Dishwasher, Disposal, Oven/Range Freestanding, Refrigerator, Washer, Dryer
Heating	Forced Air, Natural Gas
Cooling	Central Air
Fireplace	Yes
Fireplaces	Two, Gas
Stories	Single with Below Grade
Primary On Main	Yes

Exterior

Lot Description	10000 SF - .49 AC, Garden, Views, Canyon Rim, Cul-De-Sac, Rolling Slope, Auto Sprinkler System, Full Sprinkler System
Roof	Composition

School Information

District	Boise School District #1
Elementary	Longfellow
Middle	North Jr

High Boise

Additional Information

Date Listed September 8th, 2025
Days on Market 25
Property Taxes \$6,643
Tax Year 2024
Structures Storage Shed
Office Powered-By
Contact Info broker@powered-by.net

Listing Details

Listing Office Powered-By



IDX information is provided exclusively for consumers' personal, non-commercial use, and may not be used for any purpose other than to identify prospective properties consumers may be interested in purchasing. IMLS does not assume any liability for missing or inaccurate data. Information provided by IMLS is deemed reliable but not guaranteed.

Listing information last updated on October 14th, 2025 at 5:33pm MDT