

# \$375,000 - 2864 W Lemhi Street, Boise

MLS® #98960839

**\$375,000**

2 Bedroom, 3.00 Bathroom, 1,200 sqft

Residential on 0.08 Acres

Eagleson Sub, Boise, ID

Enjoy living on the bench in this move-in ready home. Home features LVP flooring throughout the lower level. Lots of great storage, 1/2 bath and convenient laundry room. Kitchen and dining area has access to a large backyard. Upstairs there are two ample size bedrooms with their own bathrooms. Entire home has been freshly painted. This would be a wonderful home for a first time homebuyer or an investor. Close to downtown, airport, shopping, BSU.

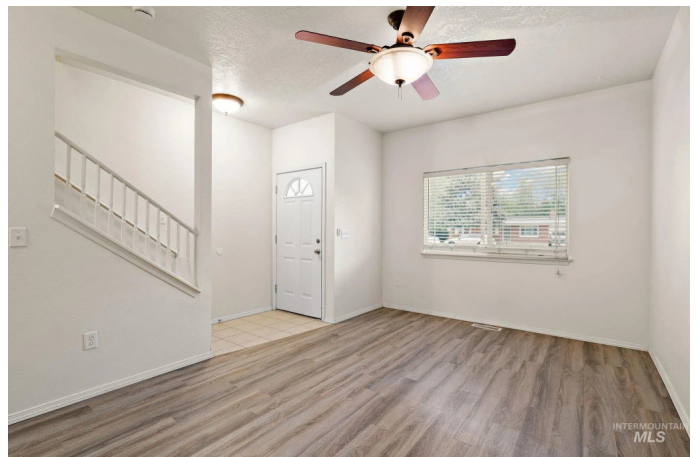
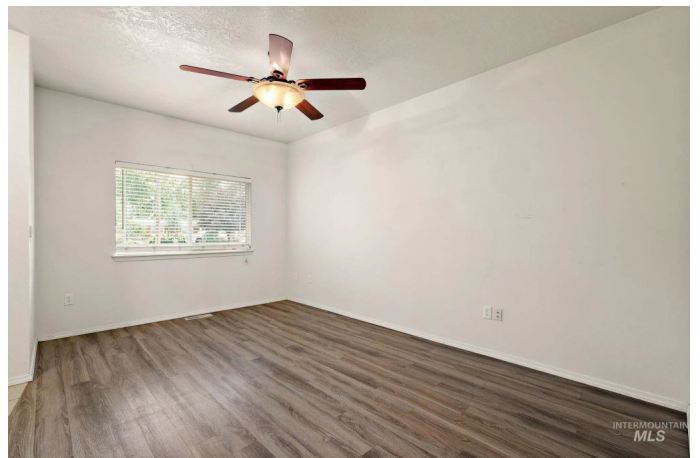
Built in 2005

## Essential Information

MLS® #	98960839
Price Per SQFT	\$313
Bedrooms	2
Bathrooms	3.00
Square Footage	1,200
Acres	0.08
Year Built	2005
Type	Residential
Sub-Type	Single Family Residence
Status	Active

## Community Information

Address	2864 W Lemhi Street
Area	Boise Bench - 0400
Subdivision	Eagleson Sub
City	Boise



County	Ada
State	ID
Zip Code	83705

### Amenities

Utilities	Sewer Connected
Parking	Finished Driveway
Golf Course	N
Virtual Tour	<a href="https://listings.snaphouse.io/sites/mnoerog/unbranded">https://listings.snaphouse.io/sites/mnoerog/unbranded</a>

### Interior

Interior Features	Bath-Master, Two Master Bedrooms, Breakfast Bar, Laminate Counters
Appliances	Gas Water Heater, Dishwasher, Oven/Range Freestanding, Refrigerator, Washer, Dryer
Heating	Forced Air, Natural Gas
Cooling	Central Air
Stories	Two
Two Primary Bedrooms	Yes

### Exterior

Lot Description	Sm Lot 5999 SF, Auto Sprinkler System, Partial Sprinkler System
Windows	Skylight(s)
Roof	Composition

### School Information

District	Boise School District #1
Elementary	Whitney
Middle	South (Boise)
High	Borah

### Additional Information

Date Listed	September 7th, 2025
Days on Market	35
Zoning	R-1C
Property Taxes	\$2,024
Tax Year	2024
Structures	Storage Shed
Office	Silvercreek Realty Group
Contact Info	<a href="mailto:broker@silvercreekrealty.com">broker@silvercreekrealty.com</a>

## Listing Details

Listing Office

Silvercreek Realty Group



IDX information is provided exclusively for consumers' personal, non-commercial use, and may not be used for any purpose other than to identify prospective properties consumers may be interested in purchasing. IMLS does not assume any liability for missing or inaccurate data. Information provided by IMLS is deemed reliable but not guaranteed.

Listing information last updated on October 15th, 2025 at 5:03am MDT