

\$899,900 - 2053 N Luge, Eagle

MLS® #98960679

\$899,900

4 Bedroom, 3.00 Bathroom, 2,635 sqft

Residential on 0.36 Acres

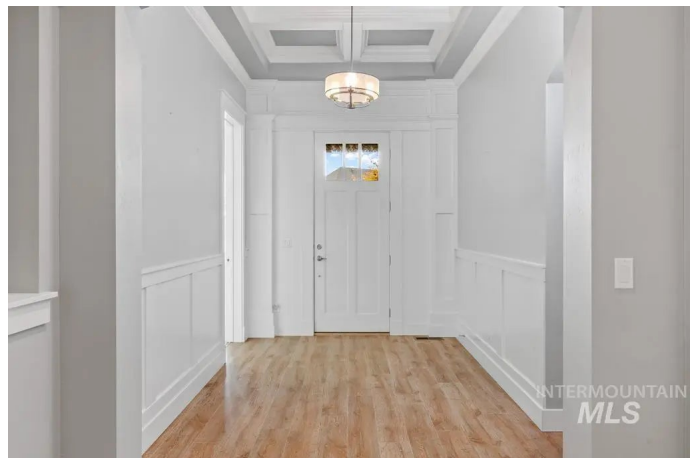
Syringa, Eagle, ID

This custom-built home on 1/3 + acre lot, offers exceptional privacy with no rear neighbors and beautifully manicured landscaping in expansive backyard. Inside, you'll find two luxurious primary suites—one thoughtfully secluded from the main living areas for added comfort and privacy. The home features an oversized three-car garage with durable epoxy flooring. Soaring ceilings are adorned with elegant beams, crown molding, coffered details, arches, and alcoves, creating a sophisticated and open atmosphere. The gourmet kitchen is a chef's dream, equipped with a 36" stainless steel, six-burner gas cooktop, double convection wall ovens, a separate microwave, and a butler's pantry with custom cabinetry. Additional highlights include a natural wood-burning fireplace, shutter window coverings in primary suites, numerous windows throughout the home, large separate laundry room with ample cabinetry, and a built-in desk in the mudroom—perfect for organization and everyday convenience.

Built in 2016

Essential Information

MLS® #	98960679
Price Per SQFT	\$342
Bedrooms	4
Bathrooms	3.00



Square Footage	2,635
Acres	0.36
Year Built	2016
Type	Residential
Sub-Type	Single Family Residence
Status	Active

Community Information

Address	2053 N Luge
Area	Eagle - 0900
Subdivision	Syringa
City	Eagle
County	Ada
State	ID
Zip Code	83616
Builder	Todd Campbell Custom Home

Amenities

Utilities	Sewer Connected, Cable Connected
Parking Spaces	3
Parking	Attached, Finished Driveway
# of Garages	3
Golf Course	N

Interior

Interior Features	Bath-Master, Family Room, Great Room, Two Master Bedrooms, Walk-In Closet(s), Breakfast Bar, Pantry, Kitchen Island, Granite Counters, Quartz Counters	
Appliances	Gas Water Heater, Dishwasher, Disposal, Double Oven, Microwave, Oven/Range Built-In, Gas Range	
Heating	Forced Air, Natural Gas	
Cooling	Central Air	
Fireplace	Yes	
Fireplaces	One	
Stories	One	
Primary On Main	Yes	
Two Primary Bedrooms	Yes	

Exterior

Lot Description	10000 SF - .49 AC, Garden, Irrigation Available, Sidewalks, Auto Sprinkler System, Pressurized Irrigation Sprinkler System, Irrigation Sprinkler System
Roof	Architectural Style

School Information

District	West Ada School District
Elementary	Star
Middle	Eagle Middle
High	Eagle

Additional Information

Date Listed	September 5th, 2025
Days on Market	35
HOA Fees	\$1,200
HOA Fees Freq.	Annually
Property Taxes	\$2,899
Tax Year	2024
Office	Remax Adventure
Contact Info	rmbdanny@gmail.com

Listing Details

Listing Office	Remax Adventure
----------------	-----------------



IDX information is provided exclusively for consumers' personal, non-commercial use, and may not be used for any purpose other than to identify prospective properties consumers may be interested in purchasing. IMLS does not assume any liability for missing or inaccurate data. Information provided by IMLS is deemed reliable but not guaranteed.

Listing information last updated on October 14th, 2025 at 7:18am MDT