

\$249,900 - 7084 W Colehaven Ln, Boise

MLS® #98960547

\$249,900

2 Bedroom, 1.00 Bathroom, 813 sqft

Residential

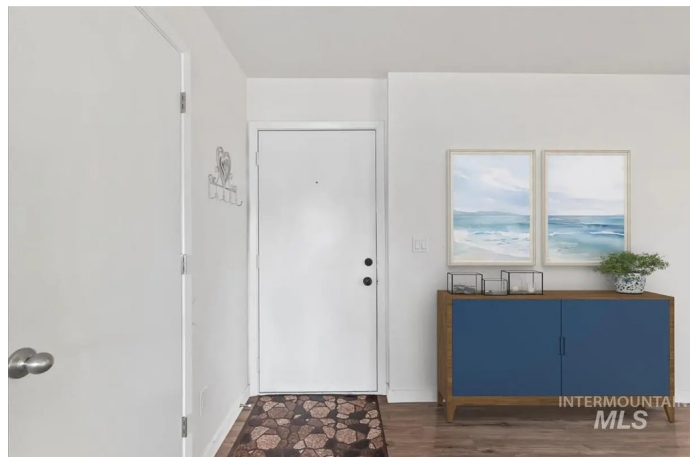
Georgia Place, Boise, ID

Recently Renovated and 'Cute as Can Be' Condo! Centrally located and tucked away from thru traffic in a desirable Boise area. This property is perfect for first time buyers, downsizing homeowners or investors! This recently remodeled unit features LVP flooring throughout. The kitchen and bathroom have been updated with new cabinets, and also both have new, quartz countertops, tile backsplash and fixtures. The washer, dryer, and all kitchen appliances are included to make this a true 'turn key' transaction. A wonderful wood burning fireplace highlights the cozy great room, and the private patio balcony is perfect for relaxing. This unit includes storage space and a dedicated covered parking space. The HOA dues cover all exterior maintenance, including the pool, landscaping, and winter snow removal. VISIT US DURING THE OPEN HOUSE SUNDAY OCT 5th 12 noon to 2pm.

Built in 1978

Essential Information

MLS® #	98960547
Price Per SQFT	\$307
Bedrooms	2
Bathrooms	1.00
Square Footage	813
Year Built	1978
Type	Residential



Sub-Type	Condominium
Status	Active

Community Information

Address	7084 W Colehaven Ln
Area	Boise West - 0600
Subdivision	Georgia Place
City	Boise
County	Ada
State	ID
Zip Code	83704

Amenities

Utilities	Sewer Connected, Cable Connected, Broadband Internet
Parking Spaces	1
Parking	Carport
Has Pool	Yes
Pool	Community, Pool
Golf Course	N

Interior

Interior Features	Quartz Counters
Appliances	Electric Water Heater, Dishwasher, Microwave, Oven/Range Freestanding, Refrigerator, Washer, Dryer
Heating	Baseboard, Ceiling, Electric
Cooling	Wall/Window Unit(s)
Fireplace	Yes
Fireplaces	One
Stories	One
Primary On Main	Yes

Exterior

Lot Description	Bus on City Route
Roof	Composition

School Information

District	Boise School District #1
Elementary	Koelsch
Middle	Fairmont

High Capital

Additional Information

Date Listed	September 3rd, 2025
Days on Market	28
Zoning	R-2
HOA Fees	\$200
HOA Fees Freq.	Monthly
Property Taxes	\$1,094
Tax Year	2024
Structures	Storage Shed
Office	Cardinal Realty of Idaho
Contact Info	CardinalRealtyofidaho@gmail.com

Listing Details

Listing Office	Cardinal Realty of Idaho
----------------	--------------------------



IDX information is provided exclusively for consumers' personal, non-commercial use, and may not be used for any purpose other than to identify prospective properties consumers may be interested in purchasing. IMLS does not assume any liability for missing or inaccurate data. Information provided by IMLS is deemed reliable but not guaranteed.

Listing information last updated on October 14th, 2025 at 7:33am MDT