

\$449,900 - 1726 E Pratt St, Meridian

MLS® #98960433

\$449,900

3 Bedroom, 2.00 Bathroom, 1,455 sqft

Residential on 0.14 Acres

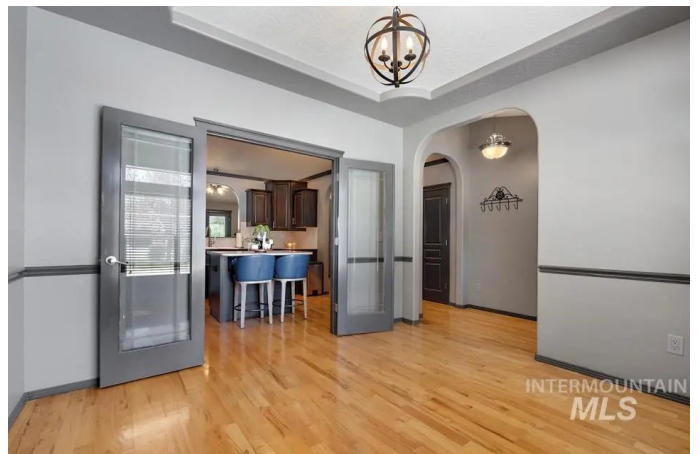
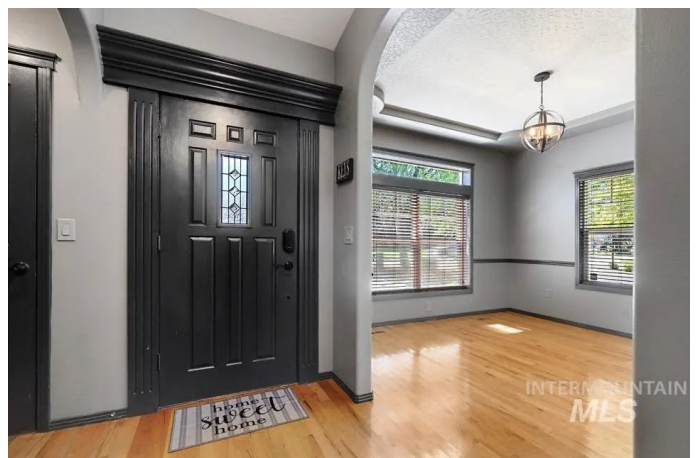
Woodbridge, Meridian, ID

Welcome to this beautiful home on a spacious corner lot in Meridian's coveted Woodbridge community. This updated residence boasts custom millwork throughout, elevating its charm & elegance. Step inside to vaulted ceilings & gorgeous hardwood floors throughout, creating an open atmosphere warmed & lit by the sun year-round. The kitchen offers stainless steel appliances, tons of storage, and double glass doors opening into a formal dining room - or versatile home office. Outside, enjoy a low-maintenance yard overlooking a quiet, park-like setting. The community features mature landscaping, tree-lined streets, miles of serene walking paths, a clubhouse & community pool. Centrally located near St. Luke's, The Village, top-rated schools, parks, dining, & easy freeway access, this home is ideal for those seeking low maintenance-living in a well located & beautiful community.

Built in 2001

Essential Information

MLS® #	98960433
Price Per SQFT	\$309
Bedrooms	3
Bathrooms	2.00
Square Footage	1,455
Acres	0.14
Year Built	2001



Type	Residential
Sub-Type	Single Family Residence
Status	Active

Community Information

Address	1726 E Pratt St
Area	Meridian NE - Boise NW - 1020
Subdivision	Woodbridge
City	Meridian
County	Ada
State	ID
Zip Code	83642

Amenities

Utilities	Sewer Connected, Cable Connected, Broadband Internet
Parking Spaces	3
Parking	Attached, Finished Driveway
# of Garages	3
Has Pool	Yes
Pool	Community, Pool
Golf Course	N

Interior

Interior Features	Bath-Master, Bed-Master Main Level, Great Room, Walk-In Closet(s), Breakfast Bar, Pantry, Kitchen Island, Granite Counters, Solid Surface Counters
Appliances	Electric Water Heater, Dishwasher, Disposal, Microwave, Oven/Range Freestanding, Refrigerator, Washer, Dryer
Heating	Forced Air, Natural Gas
Cooling	Central Air
Fireplace	Yes
Fireplaces	One, Gas, Insert
Stories	One
Primary On Main	Yes

Exterior

Lot Description	Standard Lot 6000-9999 SF, Garden, Irrigation Available, Sidewalks, Auto Sprinkler System, Full Sprinkler System, Pressurized Irrigation Sprinkler System
Foundation	Crawl Space

School Information

District	West Ada School District
Elementary	Meridian
Middle	Lewis and Clark
High	Mountain View

Additional Information

Date Listed	September 4th, 2025
Days on Market	3
HOA Fees	\$298
HOA Fees Freq.	Quarterly
Property Taxes	\$1,335
Tax Year	2024
Office	Real Broker LLC
Contact Info	idbroker@therealbrokerage.com

Listing Details

Listing Office	Real Broker LLC
----------------	-----------------



IDX information is provided exclusively for consumers' personal, non-commercial use, and may not be used for any purpose other than to identify prospective properties consumers may be interested in purchasing. IMLS does not assume any liability for missing or inaccurate data. Information provided by IMLS is deemed reliable but not guaranteed.

Listing information last updated on October 13th, 2025 at 5:33am MDT