

# \$590,000 - 369 E Wexford Ln, Eagle

MLS® #98960274

**\$590,000**

2 Bedroom, 3.00 Bathroom, 1,635 sqft

Residential on 0.05 Acres

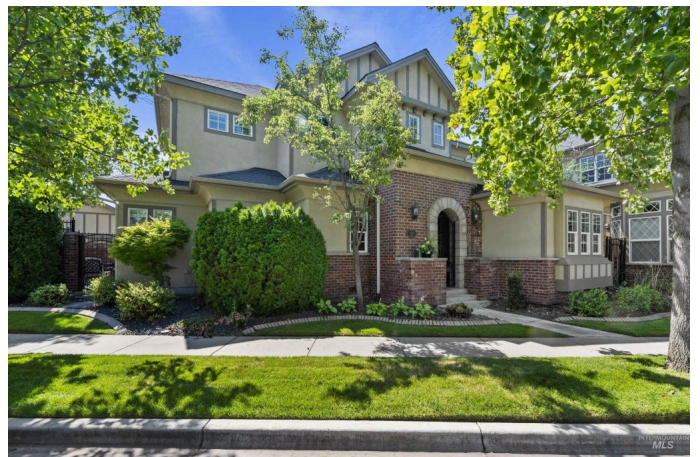
Paddy Row, Eagle, ID

Welcome to this rare corner lot home in one of Eagle's most desirable downtown locations. This home is an urban sanctuary, perfectly positioned for you to walk to the farmers market, enjoy dinner at one of the local bistros, take a peaceful stroll through Heritage Park or bike down to the Boise River Greenbelt. The private, east-facing patio is a peaceful retreat, enclosed by a charming brick wall. Inside, the unique architectural design and high-end finishes create a welcoming and sophisticated atmosphere. Ascend to your private quarters, where the primary suite provides a custom, elegant escape from the world. With the HOA handling exterior maintenance, your weekends are free to enjoy the best of downtown living. Your new home awaits!

Built in 2007

## Essential Information

MLS® #	98960274
Price Per SQFT	\$361
Bedrooms	2
Bathrooms	3.00
Square Footage	1,635
Acres	0.05
Year Built	2007
Type	Residential
Sub-Type	Single Family Residence
Status	Active



## Community Information

Address	369 E Wexford Ln
Area	Eagle - 0900
Subdivision	Paddy Row
City	Eagle
County	Ada
State	ID
Zip Code	83616
Builder	Roth Homes

## Amenities

Utilities	Sewer Connected
Parking Spaces	2
Parking	Attached
# of Garages	2
Waterfront	Creek/Stream
Golf Course	N

## Interior

Interior Features	Bath-Master, Guest Room, Den/Office, Great Room, Double Vanity, Walk-In Closet(s), Breakfast Bar, Pantry, Kitchen Island, Granite Counters
Appliances	Gas Water Heater, Tank Water Heater, Dishwasher, Disposal, Oven/Range Freestanding, Refrigerator, Washer, Dryer, Gas Oven
Heating	Forced Air, Natural Gas
Cooling	Central Air
Fireplace	Yes
Fireplaces	One, Gas
Stories	Two

## Exterior

Lot Description	Sm Lot 5999 SF, Sidewalks, Corner Lot, Auto Sprinkler System, Full Sprinkler System
Roof	Composition, Architectural Style

## School Information

District	West Ada School District
Elementary	Eagle
Middle	Eagle Middle
High	Eagle

**Additional Information**

Date Listed	September 3rd, 2025
Days on Market	38
HOA Fees	\$600
HOA Fees Freq.	Quarterly
Property Taxes	\$2,145
Tax Year	2024
Office	Relocate 208
Contact Info	rebecca@vchwest.com

**Listing Details**

Listing Office	Relocate 208
----------------	--------------



IDX information is provided exclusively for consumers' personal, non-commercial use, and may not be used for any purpose other than to identify prospective properties consumers may be interested in purchasing. IMLS does not assume any liability for missing or inaccurate data. Information provided by IMLS is deemed reliable but not guaranteed.

Listing information last updated on October 14th, 2025 at 9:18pm MDT