

# \$520,000 - 5272 N Cortona Way, Meridian

MLS® #98960196

**\$520,000**

4 Bedroom, 2.00 Bathroom, 1,790 sqft

Residential on 0.20 Acres

Verona, Meridian, ID

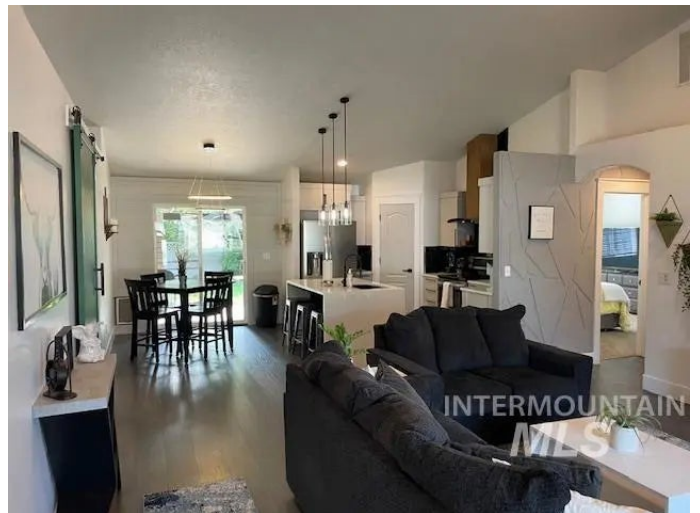
This amazing home features 4 bedrooms & 2 baths plus upstairs bonus room. Inside you will find an open concept plan with a large kitchen island, LED lights throughout along with modern finishes. Gas fireplace and new windows. Large master bedroom separate from the other bedrooms. Relax in the backyard under the 10x20 covered patio or gather the family around the fire pit. Verona subdivision is the first part of Bridgetower which includes access to multiple swimming pools, clubhouse, walking paths, and a huge park with basketball courts, soccer fields, fishing pond and playgrounds. Close to shopping, dining, & entertainment.

Built in 2004

## Essential Information

MLS® #	98960196
Price Per SQFT	\$291
Bedrooms	4
Bathrooms	2.00
Square Footage	1,790
Acres	0.20
Year Built	2004
Type	Residential
Sub-Type	Single Family Residence
Status	Active

## Community Information



Address	5272 N Cortona Way
Area	Meridian NW - 1030
Subdivision	Verona
City	Meridian
County	Ada
State	ID
Zip Code	83646

### **Amenities**

Utilities	Sewer Connected, Cable Connected
Parking Spaces	3
Parking	Attached, Finished Driveway
# of Garages	3
Has Pool	Yes
Pool	Community, In Ground, Pool
Golf Course	N

### **Interior**

Interior Features	Bath-Master, Bed-Master Main Level, Split Bedroom, Great Room, Rec/Bonus, Double Vanity, Walk-In Closet(s), Pantry, Kitchen Island, Quartz Counters
Appliances	Gas Water Heater, Dishwasher, Disposal, Microwave, Oven/Range Freestanding
Heating	Forced Air, Natural Gas
Cooling	Central Air
Fireplace	Yes
Fireplaces	One, Gas
Stories	Single w/ Upstairs Bonus Room
Primary On Main	Yes

### **Exterior**

Lot Description	Standard Lot 6000-9999 SF, Garden, Sidewalks, Auto Sprinkler System, Full Sprinkler System, Pressurized Irrigation Sprinkler System
Roof	Composition

### **School Information**

District	West Ada School District
Elementary	Willow Creek
Middle	Sawtooth Middle

High                      Rocky Mountain

**Additional Information**

Date Listed	September 2nd, 2025
Days on Market	38
HOA Fees	\$230
HOA Fees Freq.	Quarterly
Property Taxes	\$2,174
Tax Year	2024
Office	Silvercreek Realty Group
Contact Info	broker@silvercreekrealty.com

**Listing Details**

Listing Office	Silvercreek Realty Group
----------------	--------------------------



IDX information is provided exclusively for consumers' personal, non-commercial use, and may not be used for any purpose other than to identify prospective properties consumers may be interested in purchasing. IMLS does not assume any liability for missing or inaccurate data. Information provided by IMLS is deemed reliable but not guaranteed.

Listing information last updated on October 15th, 2025 at 12:03am MDT