

\$340,000 - 520 N Lucy Lane, Nampa

MLS® #98960016

\$340,000

3 Bedroom, 3.00 Bathroom, 1,411 sqft
Residential on 0.03 Acres

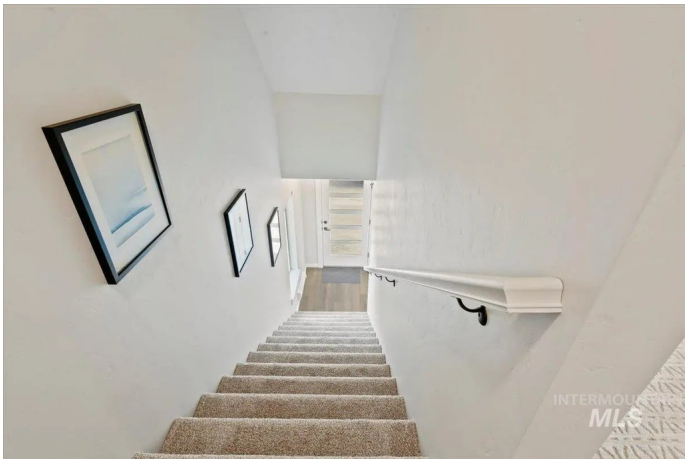
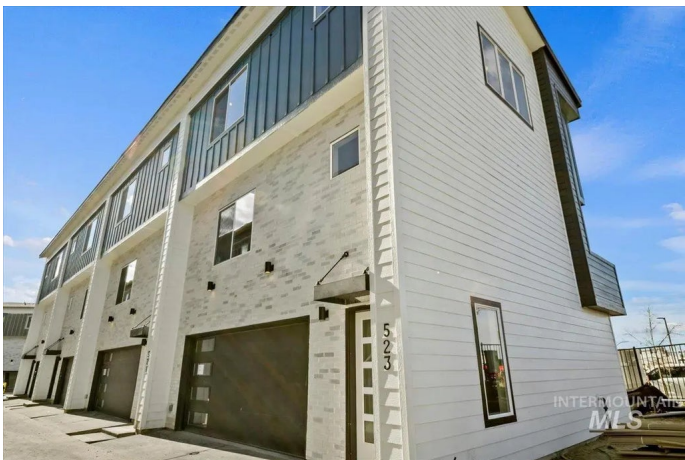
Diamond Peak Townhomes, Nampa, ID

Diamond Peak Townhomes â€” Modern Design, Prime Location Welcome to Diamond Peak Townhomes, a boutique community of 16 modern, three-level residences designed for style and convenience. The main level features a spacious two-car garage with direct access to the second floor. Here, an open-concept kitchen with quartz countertops and stainless steel appliances flows into the great room, dining area, desk space, and a powder bathâ€”perfect for everyday living. On the top floor, the primary suite boasts an en-suite bath, while two additional bedrooms, a second full bath, and a laundry closet add comfort and functionality. Located near freeway access, shopping, and dining, Diamond Peak Townhomes offer a low-maintenance, lock-and-leave lifestyle. With minimal yard upkeep and HOA-managed exteriors, youâ€™ll spend less time on chores and more time enjoying your home. Experience modern living in a prime locationâ€”welcome to Diamond Peak Townhomes!

Built in 2025

Essential Information

MLS® #	98960016
Price Per SQFT	\$241
Bedrooms	3
Bathrooms	3.00



Square Footage	1,411
Acres	0.03
Year Built	2025
Type	Residential
Sub-Type	Townhouse
Status	Active

Community Information

Address	520 N Lucy Lane
Area	Nampa South (86) - 1260
Subdivision	Diamond Peak Townhomes
City	Nampa
County	Canyon
State	ID
Zip Code	83687

Amenities

Utilities	Sewer Connected
Parking Spaces	2
Parking	Attached, Electric Vehicle Charging Station(s)
# of Garages	2
Golf Course	N
Virtual Tour	https://my.matterport.com/show/?m=AxyEnUX2k2H

Interior

Interior Features	Bath-Master, Great Room, Walk-In Closet(s), Pantry, Kitchen Island, Quartz Counters
Appliances	Electric Water Heater, Dishwasher, Disposal, Microwave, Oven/Range Freestanding, Gas Range
Heating	Forced Air, Natural Gas
Cooling	Central Air
Stories	Tri-Level

Exterior

Lot Description	Sm Lot 5999 SF, Sidewalks, Auto Sprinkler System, Full Sprinkler System
Roof	Architectural Style

School Information

District	Nampa School District #131
----------	----------------------------

Elementary	Endeavor Nampa
Middle	East Valley Mid
High	Columbia

Additional Information

Date Listed	August 29th, 2025
Days on Market	3
HOA Fees	\$100
HOA Fees Freq.	Monthly
New Construction	Yes
Property Taxes	\$1
Tax Year	2025
Office	Element Group Realty LLC
Contact Info	thegregdavisteam@gmail.com

Listing Details

Listing Office	Element Group Realty LLC
----------------	--------------------------



IDX information is provided exclusively for consumers' personal, non-commercial use, and may not be used for any purpose other than to identify prospective properties consumers may be interested in purchasing. IMLS does not assume any liability for missing or inaccurate data. Information provided by IMLS is deemed reliable but not guaranteed.

Listing information last updated on October 14th, 2025 at 11:19am MDT