

\$449,990 - 4256 E Kalinga St, Meridian

MLS® #98959889

\$449,990

3 Bedroom, 3.00 Bathroom, 1,471 sqft
Residential on 0.08 Acres

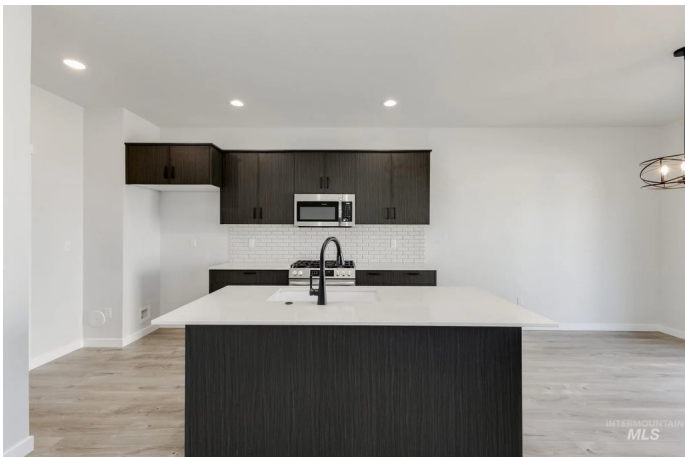
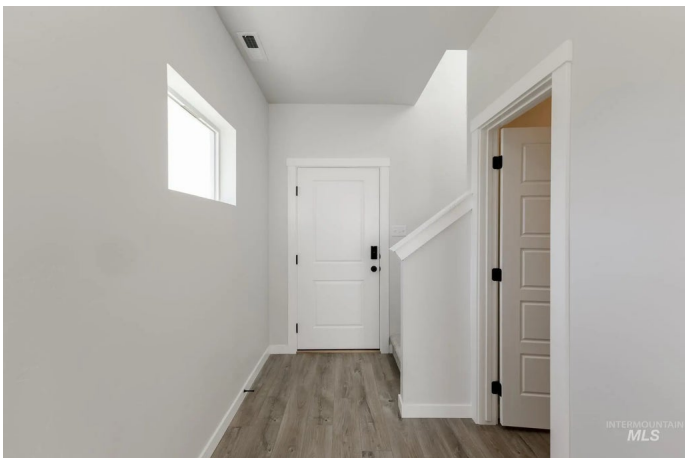
Centerville, Meridian, ID

Fall in Love with Low Rates! Promotional rate as low as 2.99%. Ask a Sales Specialist for details! Embrace the comforts of a brand new home in Meridian, Idaho. Welcome home to the timeless Poe 1471! Here you'll enjoy a thoughtfully laid out living space with an open concept main level and all three bedrooms tucked upstairs. The kitchen boasts upgraded finishes, including stainless steel appliances, a gas range, and stylish solid surface countertops. Easily slip outside for some fresh air on the back patio off the dining room. The spacious kitchen is perfect for meal prep and entertaining, featuring modern appliances and ample counter space. Retreat upstairs where the primary suite and two other bedrooms await, offering a peaceful sanctuary. The primary suite includes a large walk-in closet and a luxurious en suite bathroom. Photos are of the actual home!

Built in 2025

Essential Information

MLS® #	98959889
Price Per SQFT	\$306
Bedrooms	3
Bathrooms	3.00
Square Footage	1,471
Acres	0.08
Year Built	2025
Type	Residential



Sub-Type	Single Family Residence
Status	Active

Community Information

Address	4256 E Kalinga St
Area	Boise SW-Meridian - 0550
Subdivision	Centerville
City	Meridian
County	Ada
State	ID
Zip Code	83642
Builder	CBH Homes

Amenities

Utilities	Sewer Connected
Parking Spaces	2
Parking	Attached
# of Garages	2
Golf Course	N
Virtual Tour	https://my.matterport.com/show/?m=9h2B6agu6AC

Interior

Interior Features	Bath-Master, Double Vanity, Walk-In Closet(s), Breakfast Bar, Pantry, Kitchen Island, Solid Surface Counters
Appliances	Gas Water Heater, Dishwasher, Disposal, Microwave, Oven/Range Freestanding, Gas Range
Heating	Forced Air
Cooling	Central Air
Stories	Two

Exterior

Lot Description	Sm Lot 5999 SF, Sidewalks, Auto Sprinkler System, Partial Sprinkler System
Roof	Composition

School Information

District	West Ada School District
Elementary	Hillsdale
Middle	Lake Hazel
High	Mountain View

Additional Information

Date Listed	August 29th, 2025
Days on Market	35
HOA Fees	\$650
HOA Fees Freq.	Annually
New Construction	Yes
Tax Year	2024
Office	CBH Sales & Marketing Inc
Contact Info	tarak@cbhhomes.com

Listing Details

Listing Office	CBH Sales & Marketing Inc
----------------	---------------------------



IDX information is provided exclusively for consumers' personal, non-commercial use, and may not be used for any purpose other than to identify prospective properties consumers may be interested in purchasing. IMLS does not assume any liability for missing or inaccurate data. Information provided by IMLS is deemed reliable but not guaranteed.

Listing information last updated on October 14th, 2025 at 11:18pm MDT