

# \$436,990 - 18472 N Trumpet Lily Ave, Nampa

MLS® #98959320

**\$436,990**

4 Bedroom, 2.00 Bathroom, 2,025 sqft

Residential on 0.18 Acres

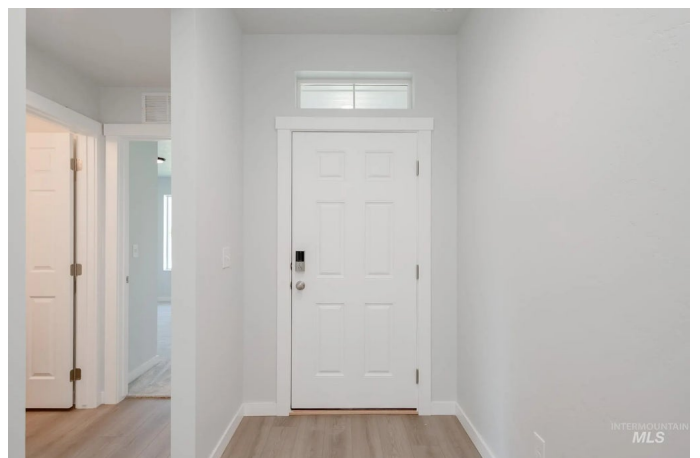
Solano Place, Nampa, ID

Fall in Love with Low Rates! Promotional rate as low as 2.99%. Ask a Sales Specialist for details! This brand new home located in vibrant Nampa, Idaho welcomes you with open arms. Dreams do come true in the Harrison 2025! Get the single-level home you always wanted without sacrificing any living space. The outside world will melt away while you relax in the bright & sunny living room at the rear of the home. The kitchen comes with stainless steel appliances and stylish solid surface countertops, adding both functionality and aesthetics to the kitchen. Discover an oasis of solitude in the primary suite with its enviable walk-in closet, dual vanities, and two refreshing windows. The concrete patio entices you to spend time outside so you will not miss even a moment of nice weather. With spacious bedrooms and a thoughtful layout, the Harrison offers the perfect balance of comfort and style. Potential RV parking available. Photos are of the actual home!

Built in 2025

## Essential Information

MLS® #	98959320
Price Per SQFT	\$216
Bedrooms	4
Bathrooms	2.00
Square Footage	2,025
Acres	0.18



Year Built	2025
Type	Residential
Sub-Type	Single Family Residence
Status	Active

### Community Information

Address	18472 N Trumpet Lily Ave
Area	Caldwell NW - 1275
Subdivision	Solano Place
City	Nampa
County	Canyon
State	ID
Zip Code	83687
Builder	CBH Homes

### Amenities

Utilities	Sewer Connected
Parking Spaces	2
Parking	Attached
# of Garages	2
Golf Course	N
Virtual Tour	<a href="https://my.matterport.com/show/?m=4eALD1JFZgs&amp;mls=1">https://my.matterport.com/show/?m=4eALD1JFZgs&amp;mls=1</a>

### Interior

Interior Features	Bath-Master, Bed-Master Main Level, Great Room, Double Vanity, Walk-In Closet(s), Breakfast Bar, Pantry, Kitchen Island, Solid Surface Counters
Appliances	Gas Water Heater, Dishwasher, Disposal, Microwave, Oven/Range Freestanding
Heating	Forced Air, Natural Gas
Cooling	Central Air
Stories	One
Primary On Main	Yes

### Exterior

Lot Description	Standard Lot 6000-9999 SF, Sidewalks, Auto Sprinkler System, Partial Sprinkler System, Pressurized Irrigation Sprinkler System
Roof	Composition

### School Information

District	Vallivue School District #139
Elementary	East Canyon
Middle	Sage Valley
High	Ridgevue

### **Additional Information**

Date Listed	August 25th, 2025
Days on Market	29
HOA Fees	\$545
HOA Fees Freq.	Annually
New Construction	Yes
Tax Year	2025
Office	CBH Sales & Marketing Inc
Contact Info	tarak@cbhhomes.com

### **Listing Details**

Listing Office	CBH Sales & Marketing Inc
----------------	---------------------------



IDX information is provided exclusively for consumers' personal, non-commercial use, and may not be used for any purpose other than to identify prospective properties consumers may be interested in purchasing. IMLS does not assume any liability for missing or inaccurate data. Information provided by IMLS is deemed reliable but not guaranteed.

Listing information last updated on October 14th, 2025 at 9:18pm MDT