

\$416,990 - 18430 N Trumpet Lily Ave, Nampa

MLS® #98959319

\$416,990

3 Bedroom, 2.00 Bathroom, 1,694 sqft

Residential on 0.18 Acres

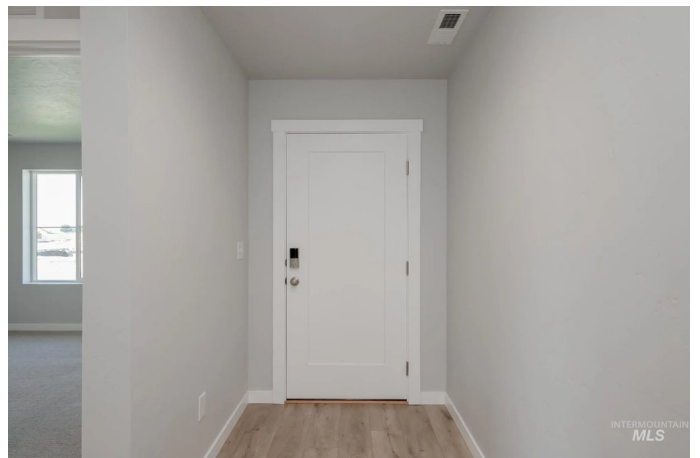
Solano Place, Nampa, ID

Fall in Love with Low Rates! Promotional rate as low as 2.99%. Ask a Sales Specialist for details! Embrace the comforts of a brand new home in Nampa, Idaho. Live your best single level life in the Bennett 1694! Enter inside to discover a very flexible layout with the kitchen, living room, and primary suite all at the rear of the home, making it easy to forget the world outside exists. The kitchen comes with stainless steel appliances and stylish solid surface countertops, adding both functionality and aesthetics to the kitchen. Recharge as you soak up a double dose of vitamin D from the large living room windows. Spill onto the back patio to enjoy fresh air and perfect Idaho weather. The primary suite feels like a true oasis, tucked away on the opposite end of the home from the other bedrooms for added privacy. The flex room offers you an additional living space to work, play, or unwind, making it easy to adjust the home to fit your needs. Potential RV parking available. Photos are of the actual home!

Built in 2025

Essential Information

MLS® #	98959319
Price Per SQFT	\$246
Bedrooms	3
Bathrooms	2.00
Square Footage	1,694



Acres	0.18
Year Built	2025
Type	Residential
Sub-Type	Single Family Residence
Status	Active

Community Information

Address	18430 N Trumpet Lily Ave
Area	Caldwell NW - 1275
Subdivision	Solano Place
City	Nampa
County	Canyon
State	ID
Zip Code	83687
Builder	CBH Homes

Amenities

Utilities	Sewer Connected
Parking Spaces	2
Parking	Attached
# of Garages	2
Golf Course	N
Virtual Tour	https://my.matterport.com/show/?m=3YUQv7eeZjy&mls=1

Interior

Interior Features	Bath-Master, Bed-Master Main Level, Split Bedroom, Great Room, Double Vanity, Breakfast Bar, Pantry, Kitchen Island, Solid Surface Counters
Appliances	Gas Water Heater, Dishwasher, Disposal, Microwave, Oven/Range Freestanding
Heating	Forced Air, Natural Gas
Cooling	Central Air
Stories	One
Primary On Main	Yes

Exterior

Lot Description	Standard Lot 6000-9999 SF, Irrigation Available, Sidewalks, Auto Sprinkler System, Partial Sprinkler System, Pressurized Irrigation Sprinkler System
Roof	Composition

School Information

District	Vallivue School District #139
Elementary	East Canyon
Middle	Sage Valley
High	Ridgevue

Additional Information

Date Listed	August 25th, 2025
Days on Market	29
HOA Fees	\$545
HOA Fees Freq.	Annually
New Construction	Yes
Tax Year	2025
Office	CBH Sales & Marketing Inc
Contact Info	tarak@cbhhomes.com

Listing Details

Listing Office	CBH Sales & Marketing Inc
----------------	---------------------------



IDX information is provided exclusively for consumers' personal, non-commercial use, and may not be used for any purpose other than to identify prospective properties consumers may be interested in purchasing. IMLS does not assume any liability for missing or inaccurate data. Information provided by IMLS is deemed reliable but not guaranteed.

Listing information last updated on October 14th, 2025 at 8:33pm MDT