

\$1,849,000 - 5788 E Marmount, Boise

MLS® #98958964

\$1,849,000

6 Bedroom, 4.00 Bathroom, 4,202 sqft

Residential on 0.22 Acres

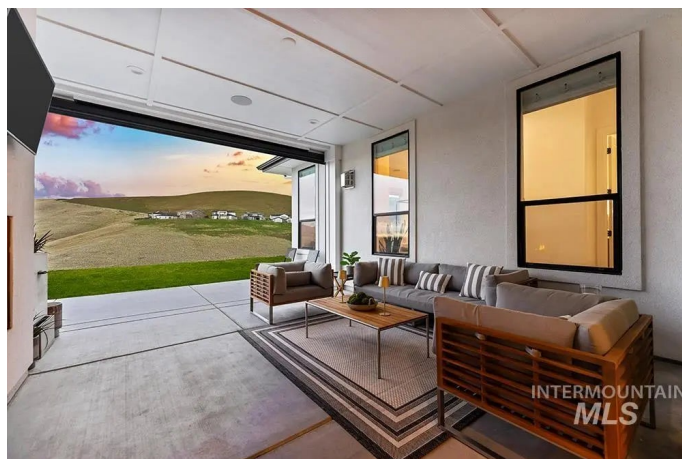
Harris North, Boise, ID

Nestled on a serene cul-de-sac in the sought-after Pinnacle at Harris North, this stunning modern home blends style and comfort on a rare rim-lot with breathtaking foothill and city-light views. Spacious and versatile, it offers 6 true bedrooms, a dedicated office, and an expansive bonus room with wet bar and balcony—perfect for relaxation or entertaining. The chef’s kitchen shines with a 12-foot island, custom cabinetry, full-wall tile backsplash, and premium Bosch appliances, ideal for hosting family and friends. The main-level primary suite is a tranquil retreat with a cozy fireplace, spa-like bath, dual walk-in closets, and panoramic picture windows. Upstairs, four additional bedrooms provide ample space for all. Enjoy resort-style community amenities, including a pool and miles of scenic trails just steps away. Newly priced, this is a rare opportunity to own a home that combines luxury and lifestyle in an unbeatable location. Schedule your private tour today!

Built in 2023

Essential Information

MLS® #	98958964
Price Per SQFT	\$440
Bedrooms	6
Bathrooms	4.00
Square Footage	4,202



Acres	0.22
Year Built	2023
Type	Residential
Sub-Type	Single Family Residence
Status	Active

Community Information

Address	5788 E Marmount
Area	Boise NE - 0200
Subdivision	Harris North
City	Boise
County	Ada
State	ID
Zip Code	83716

Amenities

Utilities	Sewer Connected
Parking Spaces	4
Parking	Attached, Finished Driveway
# of Garages	4
Has Pool	Yes
Pool	Community, In Ground, Pool
View	Yes
Golf Course	N

Interior

Interior Features	Bath-Master, Bed-Master Main Level, Guest Room, Den/Office, Great Room, Rec/Bonus, Double Vanity, Central Vacuum Plumbed, Walk-In Closet(s), Breakfast Bar, Pantry, Kitchen Island, Quartz Counters
Appliances	Gas Water Heater, Tank Water Heater, Dishwasher, Disposal, Double Oven, Oven/Range Built-In
Heating	Forced Air, Natural Gas
Cooling	Central Air
Fireplace	Yes
Fireplaces	Three or More
Stories	Two
Primary On Main	Yes

Exterior

Lot Description	Standard Lot 6000-9999 SF, Garden, Sidewalks, Views, Cul-De-Sac, Rolling Slope, Auto Sprinkler System, Full Sprinkler System
Roof	Composition

School Information

District	Boise School District #1
Elementary	Riverside
Middle	East Jr
High	Timberline

Additional Information

Date Listed	August 21st, 2025
Days on Market	47
Zoning	SP-01
HOA Fees	\$1,300
HOA Fees Freq.	Annually
Property Taxes	\$23,220
Tax Year	2024
Office	Amherst Madison
Contact Info	mike@amherst-madison.com

Listing Details

Listing Office	Amherst Madison
----------------	-----------------



IDX information is provided exclusively for consumers' personal, non-commercial use, and may not be used for any purpose other than to identify prospective properties consumers may be interested in purchasing. IMLS does not assume any liability for missing or inaccurate data. Information provided by IMLS is deemed reliable but not guaranteed.

Listing information last updated on October 14th, 2025 at 8:33pm MDT