

\$275,000 - 6738 W Westwood Ln, Boise

MLS® #98958807

\$275,000

2 Bedroom, 1.00 Bathroom, 840 sqft

Residential Income on 0.02 Acres

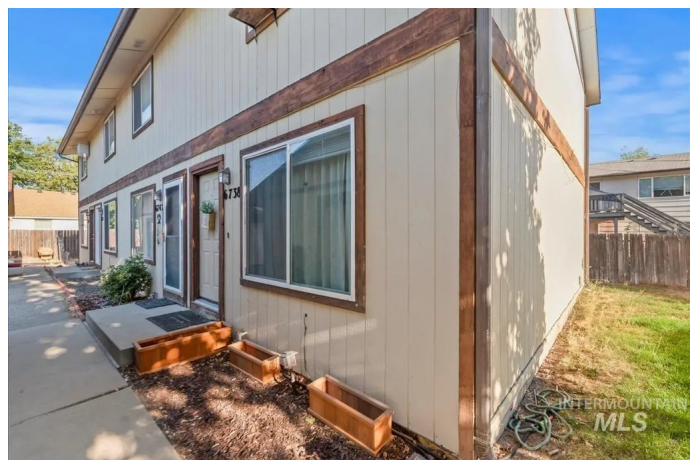
R & S Townhouse, Boise, ID

This 2-bedroom, 1-bath end-unit townhouse offers convenience, comfort, and great outdoor space. The layout features a bright living area, functional kitchen, and comfortable bedrooms, making it an ideal choice for low-maintenance living or an investment opportunity. Recent updates include a new dishwasher, adding to the home's ease of ownership. Outside, the yard provides more space than you'd expect from a townhouse—perfect for gardening, pets, or simply relaxing. The 1-car garage adds storage and convenience. Located in a prime Boise location, you'll enjoy quick access to I-84, the hospital, shopping, and dining. Whether you're looking for your first home, downsizing, or expanding your rental portfolio, this townhome is a terrific find.

Built in 1983

Essential Information

MLS® #	98958807
Price Per SQFT	\$327
Bedrooms	2
Bathrooms	1.00
Square Footage	840
Acres	0.02
Year Built	1983
Type	Residential Income
Sub-Type	Other



Status	Active
--------	--------

Community Information

Address	6738 W Westwood Ln
Area	Boise West - 0600
Subdivision	R & S Townhouse
City	Boise
County	Ada
State	ID
Zip Code	83704

Amenities

Utilities	Sewer Connected
Parking Spaces	1
Parking	Detached
Golf Course	N

Interior

Appliances	Disposal (No Units), Stove/Range (All Units), Refrigerator (All Units), Washer/Dryer (No Units)
Heating	Baseboard, Electric
Cooling	Wall/Window Unit(s)

Exterior

Lot Description	Small Lot 5999 SF
Roof	Composition

School Information

District	Boise School District #1
Elementary	Koelsch
Middle	Fairmont
High	Capital

Additional Information

Date Listed	August 20th, 2025
Days on Market	3
Property Taxes	\$2,137
Tax Year	2024
Office	Silvercreek Realty Group
Contact Info	broker@silvercreekrealty.com

Listing Details

Listing Office

Silvercreek Realty Group



IDX information is provided exclusively for consumers' personal, non-commercial use, and may not be used for any purpose other than to identify prospective properties consumers may be interested in purchasing. IMLS does not assume any liability for missing or inaccurate data. Information provided by IMLS is deemed reliable but not guaranteed.

Listing information last updated on October 11th, 2025 at 8:48pm MDT