

\$479,990 - 3469 W Morere Dr, Meridian

MLS® #98958553

\$479,990

4 Bedroom, 2.00 Bathroom, 2,025 sqft

Residential on 0.15 Acres

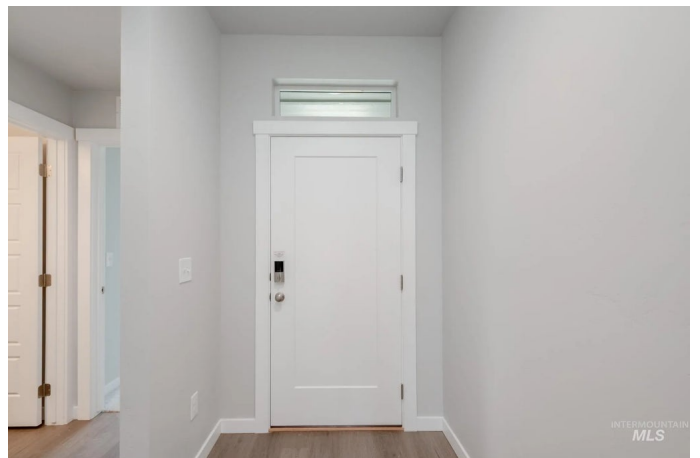
Gran Prado, Meridian, ID

Fall in Love with Low Rates! Promotional rate as low as 2.99%. Ask a Sales Specialist for details! Embrace the comforts of a brand new home in Meridian, Idaho. Dreams do come true in the Harrison 2025! Get the single-level home you always wanted without sacrificing any living space. The outside world will melt away while you relax in the bright & sunny living room at the rear of the home. The kitchen comes with stainless steel appliances and stylish solid surface countertops, adding both functionality and aesthetics to the kitchen. Discover an oasis of solitude in the primary suite with its enviable walk-in closet, dual vanities, and two refreshing windows. The concrete patio entices you to spend time outside so you will not miss even a moment of nice weather. With spacious bedrooms and a thoughtful layout, the Harrison offers the perfect balance of comfort and style. The dedicated laundry room adds even more convenience to your daily routine. Photos are of the actual home!

Built in 2025

Essential Information

MLS® #	98958553
Price Per SQFT	\$237
Bedrooms	4
Bathrooms	2.00
Square Footage	2,025



Acres	0.15
Year Built	2025
Type	Residential
Sub-Type	Single Family Residence
Status	Active

Community Information

Address	3469 W Morere Dr
Area	Meridian SW - 1010
Subdivision	Gran Prado
City	Meridian
County	Ada
State	ID
Zip Code	83642
Builder	CBH Homes

Amenities

Utilities	Sewer Connected
Parking Spaces	3
Parking	Attached
# of Garages	3
Golf Course	N
Virtual Tour	https://my.matterport.com/show/?m=4eALD1JFZgs&mls=1

Interior

Interior Features	Bath-Master, Bed-Master Main Level, Double Vanity, Breakfast Bar, Pantry, Kitchen Island, Solid Surface Counters
Appliances	Gas Water Heater, Dishwasher, Disposal, Microwave, Oven/Range Freestanding
Heating	Forced Air, Natural Gas
Cooling	Central Air
Stories	One
Primary On Main	Yes

Exterior

Lot Description	Standard Lot 6000-9999 SF, Sidewalks, Auto Sprinkler System, Partial Sprinkler System, Pressurized Irrigation Sprinkler System
Roof	Composition

School Information

District	West Ada School District
Elementary	Mary McPherson
Middle	Victory
High	Meridian

Additional Information

Date Listed	August 18th, 2025
Days on Market	31
HOA Fees	\$625
HOA Fees Freq.	Annually
New Construction	Yes
Tax Year	2024
Office	CBH Sales & Marketing Inc
Contact Info	tarak@cbhhomes.com

Listing Details

Listing Office	CBH Sales & Marketing Inc
----------------	---------------------------



IDX information is provided exclusively for consumers' personal, non-commercial use, and may not be used for any purpose other than to identify prospective properties consumers may be interested in purchasing. IMLS does not assume any liability for missing or inaccurate data. Information provided by IMLS is deemed reliable but not guaranteed.

Listing information last updated on October 14th, 2025 at 8:03pm MDT