

\$439,990 - 3289 W Morere Dr, Meridian

MLS® #98958550

\$439,990

3 Bedroom, 2.00 Bathroom, 1,522 sqft
Residential on 0.12 Acres

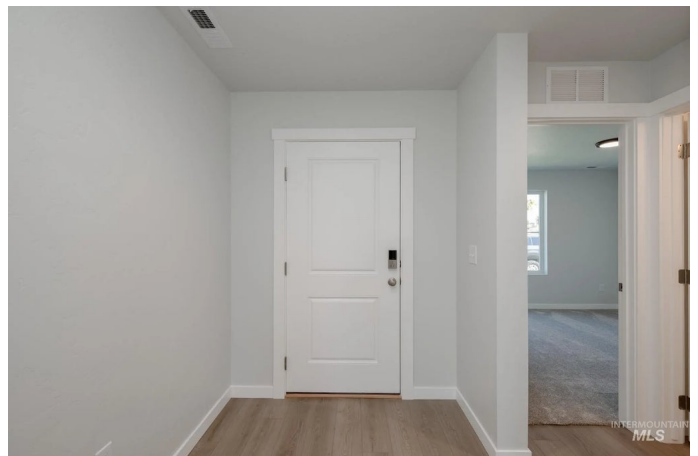
Gran Prado, Meridian, ID

Fall in Love with Low Rates! Promotional rate as low as 2.99%. Ask a Sales Specialist for details! This brand new home located in vibrant Meridian, Idaho welcomes you with open arms. As beautiful as its name, the Olivia 1522 is just the right size for you to call home. Not only are your two bedrooms split from the primary suite, but all your entertaining needs are also resolved with an open living room layout and vaulted ceilings. Cooking up a delicious meal at your kitchen island all while playing host will let you stay both social and productive during gatherings. The kitchen's ample counter space and modern appliances make meal prep a breeze. Don't forget, your primary suite is your next escape from the hustle and bustle, it's so easy to fall in love with the walk-in closet and more! With a layout that maximizes space and comfort, the Olivia provides both style and practicality. You'll find everything you need and more in this charming home. Photos are of the actual home!

Built in 2025

Essential Information

MLS® #	98958550
Price Per SQFT	\$289
Bedrooms	3
Bathrooms	2.00
Square Footage	1,522



Acres	0.12
Year Built	2025
Type	Residential
Sub-Type	Single Family Residence
Status	Active

Community Information

Address	3289 W Morere Dr
Area	Meridian SW - 1010
Subdivision	Gran Prado
City	Meridian
County	Ada
State	ID
Zip Code	83642
Builder	CBH Homes

Amenities

Utilities	Sewer Connected
Parking Spaces	2
Parking	Attached
# of Garages	2
Golf Course	N
Virtual Tour	https://my.matterport.com/show/?m=Z89uMFmNBvE&mls=1

Interior

Interior Features	Bath-Master, Bed-Master Main Level, Double Vanity, Breakfast Bar, Pantry, Kitchen Island
Appliances	Gas Water Heater, Dishwasher, Disposal, Microwave, Oven/Range Freestanding
Heating	Forced Air, Natural Gas
Cooling	Central Air
Stories	One
Primary On Main	Yes

Exterior

Lot Description	Sm Lot 5999 SF, Sidewalks, Auto Sprinkler System, Partial Sprinkler System, Pressurized Irrigation Sprinkler System
Roof	Composition

School Information

District	West Ada School District
Elementary	Mary McPherson
Middle	Victory
High	Meridian

Additional Information

Date Listed	August 18th, 2025
Days on Market	31
HOA Fees	\$625
HOA Fees Freq.	Annually
New Construction	Yes
Tax Year	2025
Office	CBH Sales & Marketing Inc
Contact Info	tarak@cbhhomes.com

Listing Details

Listing Office	CBH Sales & Marketing Inc
----------------	---------------------------



IDX information is provided exclusively for consumers' personal, non-commercial use, and may not be used for any purpose other than to identify prospective properties consumers may be interested in purchasing. IMLS does not assume any liability for missing or inaccurate data. Information provided by IMLS is deemed reliable but not guaranteed.

Listing information last updated on October 14th, 2025 at 7:48pm MDT