

# \$419,990 - 9203 W White Jasmine Ct, Nampa

MLS® #98958534

**\$419,990**

3 Bedroom, 2.00 Bathroom, 1,447 sqft

Residential on 0.17 Acres

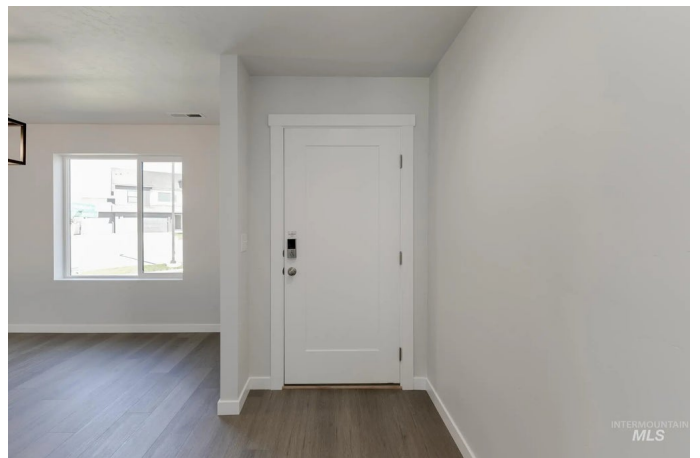
Solano Place, Nampa, ID

Fall in Love with Low Rates! Promotional rate as low as 2.99%. Ask a Sales Specialist for details! Embrace the comforts of a brand new home in Nampa, Idaho. The Chandler 1447 is the perfect house for anyone who is looking for a cozy, comfortable atmosphere. The primary suite is situated at the rear of the home and contains an en suite bathroom and walk-in closet, perfect for a good night's sleep or a lazy weekend morning. The highlight of the house, however, is the large living/entertaining space. With an open floor plan, you'll have plenty of room to curl up with a book, watch a movie, host a dinner party, or just relax. The kitchen is equipped with all the modern amenities to rediscover the joy of cooking. The outdoor spaces are perfect for hosting barbeques on warm summer days or just enjoying a morning cup of coffee in the fresh air. Whether you're unwinding alone or with friends, the Chandler 1447 is the perfect place to do it. Potential RV parking available. Photos are of the actual home!

Built in 2025

## Essential Information

MLS® #	98958534
Price Per SQFT	\$290
Bedrooms	3
Bathrooms	2.00
Square Footage	1,447



Acres	0.17
Year Built	2025
Type	Residential
Sub-Type	Single Family Residence
Status	Active

### Community Information

Address	9203 W White Jasmine Ct
Area	Caldwell NW - 1275
Subdivision	Solano Place
City	Nampa
County	Canyon
State	ID
Zip Code	83687
Builder	CBH Homes

### Amenities

Utilities	Sewer Connected
Parking Spaces	2
Parking	Attached
# of Garages	2
Golf Course	N
Virtual Tour	<a href="https://my.matterport.com/show/?m=YCaScGA3VyU&amp;brand=0">https://my.matterport.com/show/?m=YCaScGA3VyU&amp;brand=0</a>

### Interior

Interior Features	Bath-Master, Bed-Master Main Level, Formal Dining, Double Vanity, Walk-In Closet(s), Breakfast Bar, Pantry, Kitchen Island
Appliances	Gas Water Heater, Dishwasher, Disposal, Microwave, Oven/Range Freestanding
Heating	Forced Air, Natural Gas
Cooling	Central Air
Stories	One
Primary On Main	Yes

### Exterior

Lot Description	Standard Lot 6000-9999 SF, Irrigation Available, Sidewalks, Auto Sprinkler System, Partial Sprinkler System, Pressurized Irrigation Sprinkler System
Roof	Composition

**School Information**

District	Vallivue School District #139
Elementary	East Canyon
Middle	Sage Valley
High	Ridgevue

**Additional Information**

Date Listed	August 18th, 2025
Days on Market	36
HOA Fees	\$545
HOA Fees Freq.	Annually
New Construction	Yes
Tax Year	2025
Office	CBH Sales & Marketing Inc
Contact Info	tarak@cbhhomes.com

**Listing Details**

Listing Office	CBH Sales & Marketing Inc
----------------	---------------------------



IDX information is provided exclusively for consumers' personal, non-commercial use, and may not be used for any purpose other than to identify prospective properties consumers may be interested in purchasing. IMLS does not assume any liability for missing or inaccurate data. Information provided by IMLS is deemed reliable but not guaranteed.

Listing information last updated on October 14th, 2025 at 2:34pm MDT