

\$0 - 20 E Shafer View Drive, Meridian

MLS® #98958470

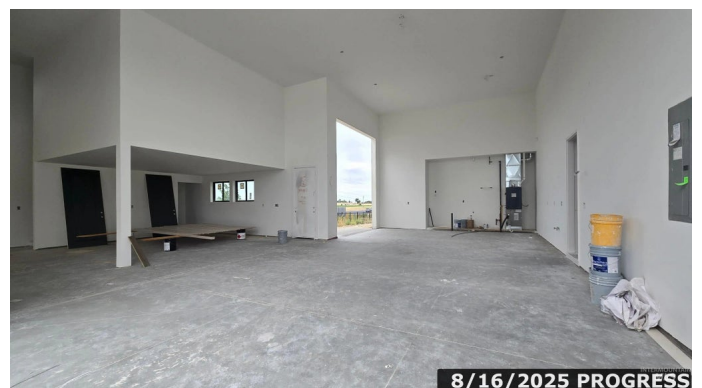
\$0

4 Bedroom, 5.00 Bathroom, 3,534 sqft

Residential on 0.71 Acres

Shafer View Terrace, Meridian, ID

Welcome to the Ellis! This beautiful home has room for everyone! Spacious primary suite boasts beamed ceiling, feature wall and oversized walk-in closet. Primary bath w/luxurious free standing tub, walk-in tiled shower plus dual vanities. 2nd primary bedroom with feature wall & walk-in closet as well and BOTH suites overlook the covered patio and backyard. ALL bedrooms have their own bathroom! Along with the 4 bedrooms, spacious gathering in the great room/living area with cozy stone fireplace PLUS an additional media room. 2149sqft garage! 21x40ft RV garage w/sink plus 15x16 partially enclosed loft for endless possibilities. Nearly 3/4 Acre lot w/North facing backyard, firepit area & pressurized irrigation w/HUGE covered patio & views toward Shafer Butte & the Boise foothills. Beautiful home by local builder, Eaglewood Homes! ** Loft in garage



Built in 2025

Essential Information

MLS® #	98958470
Bedrooms	4
Bathrooms	5.00
Square Footage	3,534
Acres	0.71
Year Built	2025
Type	Residential
Sub-Type	Single Family Residence

Status	No Price New Construction
--------	---------------------------

Community Information

Address	20 E Shafer View Drive
Area	Meridian SE - 1000
Subdivision	Shafer View Terrace
City	Meridian
County	Ada
State	ID
Zip Code	83642
Builder	Eaglewood Homes

Amenities

Utilities	Sewer Connected, Broadband Internet
Parking Spaces	6
Parking	Attached, RV Access/Parking
# of Garages	6
RV/Boat Parking	Yes
Golf Course	N
Virtual Tour	https://tourfactory.com/idxr3179584

Interior

Interior Features	Bath-Master, Bed-Master Main Level, Split Bedroom, Den/Office, Family Room, Rec/Bonus, Two Master Bedrooms, Double Vanity, Central Vacuum Plumbed, Walk-In Closet(s), Pantry, Kitchen Island, Solid Surface Counters	
Appliances	Gas Water Heater, Tankless Water Heater, Dishwasher, Disposal, Double Oven, Microwave, Oven/Range Built-In, Gas Range	
Heating	Forced Air, Natural Gas	
Cooling	Central Air	
Fireplace	Yes	
Fireplaces	One, Gas	
Stories	One	
Primary On Main	Yes	
Two Primary Bedrooms	Yes	

Exterior

Lot Description	1/2 - .99 AC, Corner Lot, Auto Sprinkler System, Full Sprinkler System, Pressurized Irrigation Sprinkler System
Roof	Architectural Style

Foundation Crawl Space

School Information

District West Ada School District
Elementary Mary McPherson
Middle Victory
High Mountain View

Additional Information

Date Listed August 16th, 2025
HOA Fees \$800
HOA Fees Freq. Annually
New Construction Yes
Tax Year 2024
Office Coldwell Banker Tomlinson
Contact Info bvanallen@cbboise.com

Listing Details

Listing Office Coldwell Banker Tomlinson



IDX information is provided exclusively for consumers' personal, non-commercial use, and may not be used for any purpose other than to identify prospective properties consumers may be interested in purchasing. IMLS does not assume any liability for missing or inaccurate data. Information provided by IMLS is deemed reliable but not guaranteed.

Listing information last updated on October 13th, 2025 at 7:33am MDT