

\$729,000 - 120 E Pennsylvania St, Boise

MLS® #98958300

\$729,000

3 Bedroom, 3.00 Bathroom, 2,261 sqft
Residential on 0.03 Acres

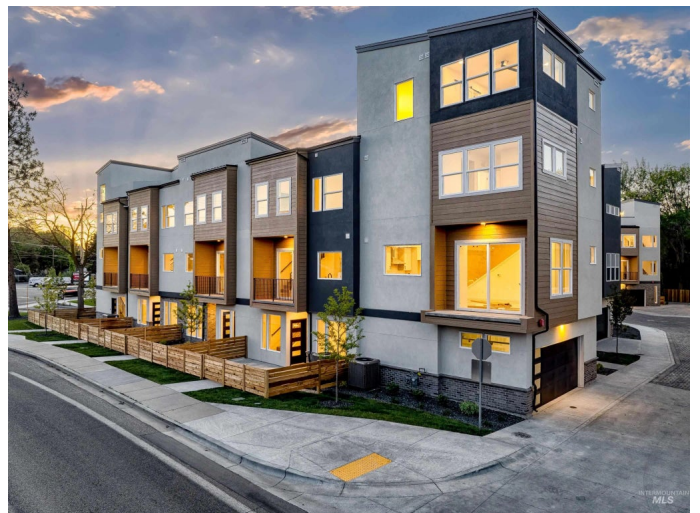
Boise 23, Boise, ID

Huge builder buydown promotion! Rates as low as 3.75% and 30yr FIXED as low as 5.49%! Ask about how to lock in these rates yourself! Elevate your lifestyle with rooftop living at its finest in Boise23 where high-style meets low-maintenance in architecturally distinctive single-family townhomes! Expansive windows flood every level with natural light and showcase wide-open views. Enjoy your private rear yard, expansive rooftop patio, and balcony for year-round outdoor living. The main floorâ€™s open-concept kitchen, dining, powder bath, and great room flow effortlessly to the balcony. The secondary bedrooms are located with laundry on the 3rd floor while the 4th floor is a showstopper: the primary suite featuring a spa-inspired 5-piece ensuite with freestanding soaking tub, designer finishes, and walk-in closet plus a private rooftop patio! Experience the rare combination of modern design, unbeatable location, and now an incredible financing opportunity! See docs tab for rate flyer.

Built in 2025

Essential Information

MLS® #	98958300
Price Per SQFT	\$322
Bedrooms	3
Bathrooms	3.00
Square Footage	2,261



Acres	0.03
Year Built	2025
Type	Residential
Sub-Type	Townhouse
Status	Active

Community Information

Address	120 E Pennsylvania St
Area	Boise SE - 0300
Subdivision	Boise 23
City	Boise
County	Ada
State	ID
Zip Code	83706
Builder	MVRK Development

Amenities

Utilities	Sewer Connected, Cable Connected, Broadband Internet
Parking Spaces	2
Parking	Attached
# of Garages	2
View	Yes
Golf Course	N

Interior

Interior Features	Bath-Master, Guest Room, Den/Office, Formal Dining, Great Room, Rec/Bonus, Two Master Bedrooms, Double Vanity, Walk-In Closet(s), Breakfast Bar, Pantry, Kitchen Island, Quartz Counters
Appliances	Electric Water Heater, ENERGY STAR Qualified Water Heater, Tank Water Heater, Dishwasher, Disposal, Oven/Range Built-In, Gas Oven, Gas Range
Heating	Forced Air
Cooling	Central Air
Stories	Tri-Level
Two Primary Bedrooms	Yes

Exterior

Lot Description	Sm Lot 5999 SF, Dog Run, Sidewalks, Views, Corner Lot, Cul-De-Sac, Auto Sprinkler System
Roof	Composition, Architectural Style

Foundation Slab

School Information

District Boise School District #1
Elementary Garfield
Middle East Jr
High Timberline

Additional Information

Date Listed August 15th, 2025
Days on Market 59
Zoning MX-1
HOA Fees \$140
HOA Fees Freq. Monthly
New Construction Yes
Property Taxes \$988
Tax Year 2024
Office Keller Williams Realty Boise
Contact Info broker@kwboise.com

Listing Details

Listing Office Keller Williams Realty Boise



IDX information is provided exclusively for consumers' personal, non-commercial use, and may not be used for any purpose other than to identify prospective properties consumers may be interested in purchasing. IMLS does not assume any liability for missing or inaccurate data. Information provided by IMLS is deemed reliable but not guaranteed.

Listing information last updated on October 14th, 2025 at 9:48pm MDT