

\$869,900 - 342 N Clearpoint Way, Eagle

MLS® #98958106

\$869,900

5 Bedroom, 3.00 Bathroom, 3,580 sqft
Residential on 0.28 Acres

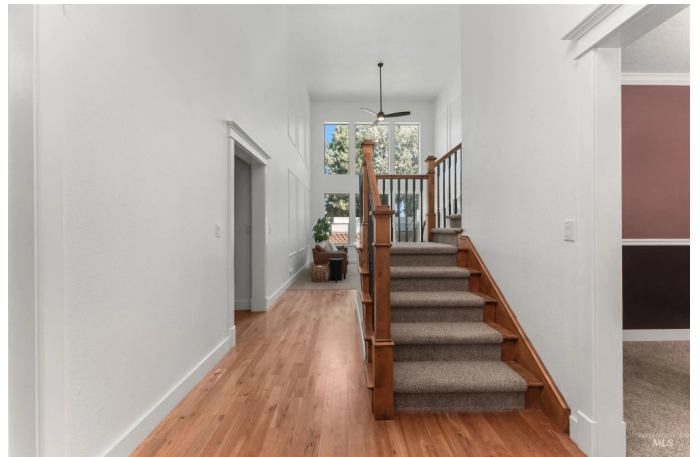
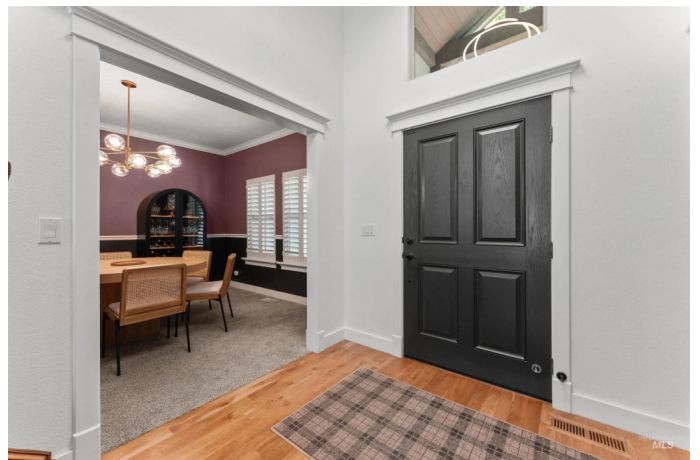
Countryside Est, Eagle, ID

Exceptional property on a premier corner lot with no rear neighbors in the sought-after Countryside Estates in Eagle. The striking interior boasts soaring ceilings in the family room, rich cherry hardwood floors, and a beautiful floor-to-ceiling stone fireplace. Spanning over 3,500 sq. ft., the impressive floor plan offers 5 spacious bedrooms, 1 operating as an executive office with custom built-ins, a formal dining/flex room, multiple living areas ideal for entertaining, and a massive bonus room that could serve as a 6th bedroom. The gourmet kitchen showcases a quartz island with waterfall edge, custom cabinetry, double ovens, and a pantry. The main-level owner's suite features tray ceilings, sliders to a private patio, dual vanities, a soaker tub, tile shower, and walk-in closet. Upstairs includes 3 bedrooms, a full bath, and a large bonus room. Perfect for indoor/outdoor entertaining with a private, fully fenced yard, covered patio, and lush landscaping. 4-car tandem garage with abundant storage.

Built in 2003

Essential Information

MLS® #	98958106
Price Per SQFT	\$243
Bedrooms	5
Bathrooms	3.00



Square Footage	3,580
Acres	0.28
Year Built	2003
Type	Residential
Sub-Type	Single Family Residence
Status	Active

Community Information

Address	342 N Clearpoint Way
Area	Eagle - 0900
Subdivision	Countryside Est
City	Eagle
County	Ada
State	ID
Zip Code	83616

Amenities

Utilities	Sewer Connected
Parking Spaces	4
Parking	Attached
# of Garages	4
Golf Course	N
Virtual Tour	https://unbranded.youriguide.com/yfqha_342_n_clearpoint_way_eagle_id/

Interior

Interior Features	Bath-Master, Bed-Master Main Level, Den/Office, Formal Dining, Family Room, Great Room, Rec/Bonus, Walk-In Closet(s), Pantry, Quartz Counters
Appliances	Gas Water Heater, Dishwasher, Disposal, Double Oven, Oven/Range Built-In, Gas Range
Heating	Forced Air, Natural Gas
Cooling	Central Air
Fireplace	Yes
Fireplaces	One, Gas
Stories	Two
Primary On Main	Yes

Exterior

Lot Description	10000 SF - .49 AC, Sidewalks, Corner Lot, Auto Sprinkler System, Irrigation Sprinkler System
Windows	Skylight(s)
Roof	Composition
Foundation	Crawl Space

School Information

District	West Ada School District
Elementary	Eagle Hills
Middle	Eagle Middle
High	Eagle

Additional Information

Date Listed	August 14th, 2025
Days on Market	38
HOA Fees	\$365
HOA Fees Freq.	Quarterly
Property Taxes	\$2,795
Tax Year	2024
Office	THG Real Estate
Contact Info	elliott@thgboise.com

Listing Details

Listing Office	THG Real Estate
----------------	-----------------



IDX information is provided exclusively for consumers' personal, non-commercial use, and may not be used for any purpose other than to identify prospective properties consumers may be interested in purchasing. IMLS does not assume any liability for missing or inaccurate data. Information provided by IMLS is deemed reliable but not guaranteed.

Listing information last updated on October 14th, 2025 at 2:34pm MDT