

# \$479,000 - 15233 Castle Way, Caldwell

MLS® #98957985

**\$479,000**

3 Bedroom, 3.00 Bathroom, 1,680 sqft  
Residential on 0.43 Acres

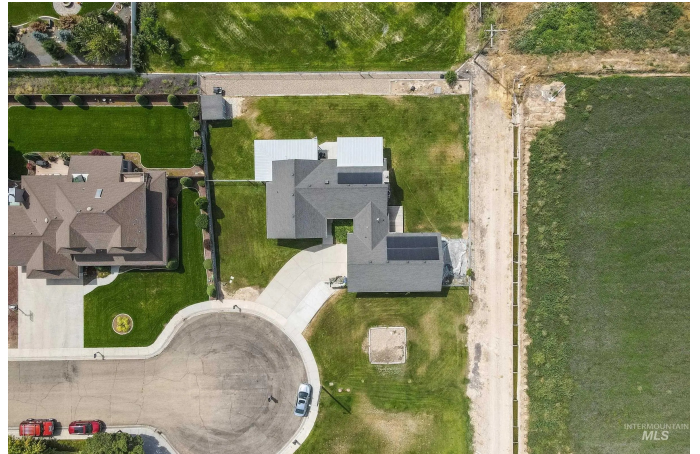
El Rancho Heigh, Caldwell, ID

"Energy-Efficient Living!" Enjoy significantly reduced energy bills (averaging under \$300 per year) with OWNED SOLAR PANELS. Enter to an inviting open floor plan that showcases a raised living room, formal dining space adjacent, along with a cozy family room space featuring a pellet insert fireplace with custom stone surround along with rich quality wood work. Outside, a fully fenced backyard with a covered patio provides space for relaxation. Generous 4 CAR GARAGE, heated and heavily insulated w/motion detection lighting! New windows, new window coverings (includes remove control blinds), new lvp flooring, newer appliances, new concrete driveway, and new water heater. Community park and tennis court. Minutes from Lake Lowell. HOA dues cover home's interior and exterior water, and maintenance of tennis court, park, and common areas.

Built in 1978

## Essential Information

MLS® #	98957985
Price Per SQFT	\$285
Bedrooms	3
Bathrooms	3.00
Square Footage	1,680
Acres	0.43
Year Built	1978
Type	Residential



Sub-Type	Single Family Residence
Status	Active

### Community Information

Address	15233 Castle Way
Area	Caldwell SW - 1280
Subdivision	El Rancho Heigh
City	Caldwell
County	Canyon
State	ID
Zip Code	83607

### Amenities

Utilities	Electricity Connected
Parking Spaces	4
Parking	Attached, Finished Driveway
# of Garages	4
Golf Course	N

### Interior

Interior Features	Bath-Master, Bed-Master Main Level, Family Room, Breakfast Bar, Laminate Counters
Appliances	Electric Water Heater, Dishwasher, Disposal, Microwave, Oven/Range Freestanding, Refrigerator
Heating	Heated, Electric, Forced Air
Cooling	Central Air
Fireplace	Yes
Fireplaces	Insert, Pellet Stove
Stories	One
Primary On Main	Yes

### Exterior

Lot Description	10000 SF - .49 AC, Dog Run, Garden, Tennis Court, Cul-De-Sac, Auto Sprinkler System, Full Sprinkler System
Roof	Composition
Foundation	Crawl Space

### School Information

District	Vallivue School District #139
Elementary	Lakevue

Middle	Vallivue Middle
High	Vallivue

**Additional Information**

Date Listed	August 13th, 2025
Days on Market	62
HOA Fees	\$45
HOA Fees Freq.	Monthly
Property Taxes	\$2,182
Tax Year	2024
Structures	Storage Shed
Office	exp Realty, LLC
Contact Info	bobbass@bobbass.com

**Listing Details**

Listing Office	exp Realty, LLC
----------------	-----------------



IDX information is provided exclusively for consumers' personal, non-commercial use, and may not be used for any purpose other than to identify prospective properties consumers may be interested in purchasing. IMLS does not assume any liability for missing or inaccurate data. Information provided by IMLS is deemed reliable but not guaranteed.

Listing information last updated on October 15th, 2025 at 12:48pm MDT