

\$519,990 - 2127 S Tucson Ave, Nampa

MLS® #98957898

\$519,990

3 Bedroom, 3.00 Bathroom, 2,428 sqft

Residential on 0.21 Acres

Sands Pointe, Nampa, ID

MOTIVATED SELLER – PRICE REDUCTION. You don't want to miss this opportunity. Welcome to Sands Pointe in Nampa! This spacious 2,428 sq. ft. home offers the perfect blend of comfort and style for family living. Step through the elegant entryway into the open-concept kitchen, complete with quartz countertops, a large walk-in pantry, and hardwood flooring that flows into the dining area. The inviting living room features vaulted ceilings, a cozy gas fireplace, and pre-wiring for your TV setup. The main-level master suite boasts 9-foot ceilings, a soaking tub/shower combo, dual vanities, and a huge walk-in closet. Four additional roomy bedrooms are conveniently located on the main level, while the upstairs junior suite adds extra flexibility for guests, hobbies, or a private retreat. Situated on an oversized corner lot, this home includes a 3-car garage, plus a backyard storage shed for tools or toys. The expansive outdoor space is ideal for gardening, play, or hosting gatherings in your very own entertaining area—the possibilities are endless!

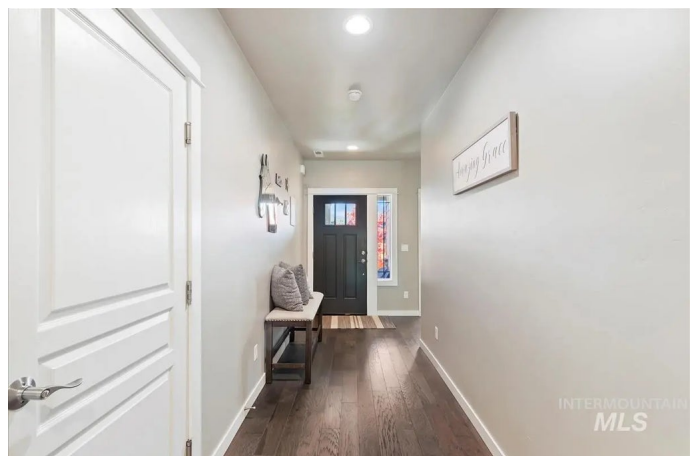
Built in 2017

Essential Information

MLS® # 98957898

Price Per SQFT \$214

Bedrooms 3



Bathrooms	3.00
Square Footage	2,428
Acres	0.21
Year Built	2017
Type	Residential
Sub-Type	Single Family Residence
Status	Active

Community Information

Address	2127 S Tucson Ave
Area	Nampa South (86) - 1260
Subdivision	Sands Pointe
City	Nampa
County	Canyon
State	ID
Zip Code	83686

Amenities

Utilities	Sewer Connected
Parking Spaces	3
Parking	Attached, RV Access/Parking
# of Garages	3
RV/Boat Parking	Yes
Golf Course	N
Virtual Tour	https://my.matterport.com/show/?m=QVFNGhbGBXj&play=1&ts=1&play=1&ts=1

Interior

Interior Features	Bath-Master, Bed-Master Main Level, Guest Room, Great Room, Double Vanity, Walk-In Closet(s), Breakfast Bar, Pantry, Kitchen Island, Solid Surface Counters
Appliances	Gas Water Heater, Dishwasher, Disposal, Microwave, Oven/Range Freestanding, Gas Range
Heating	Forced Air, Natural Gas
Cooling	Central Air
Fireplace	Yes
Fireplaces	Gas
Stories	Single w/ Upstairs Bonus Room
Primary On Main	Yes

Exterior

Lot Description	Standard Lot 6000-9999 SF, Garden, Irrigation Available, R.V. Parking, Auto Sprinkler System, Full Sprinkler System
Roof	Composition, Architectural Style
Foundation	Crawl Space

School Information

District	Nampa School District #131
Elementary	Owyhee
Middle	Lone Star
High	Skyview

Additional Information

Date Listed	August 12th, 2025
Days on Market	63
HOA Fees	\$214
HOA Fees Freq.	Annually
Property Taxes	\$3,439
Tax Year	2024
Structures	Storage Shed
Office	Redfin Corporation
Contact Info	matthew.brennan@redfin.com

Listing Details

Listing Office	Redfin Corporation
----------------	--------------------



IDX information is provided exclusively for consumers' personal, non-commercial use, and may not be used for any purpose other than to identify prospective properties consumers may be interested in purchasing. IMLS does not assume any liability for missing or inaccurate data. Information provided by IMLS is deemed reliable but not guaranteed.

Listing information last updated on October 15th, 2025 at 9:03am MDT