

\$425,990 - 16312 Backfill Ave, Caldwell

MLS® #98957783

\$425,990

4 Bedroom, 2.00 Bathroom, 1,860 sqft

Residential on 0.19 Acres

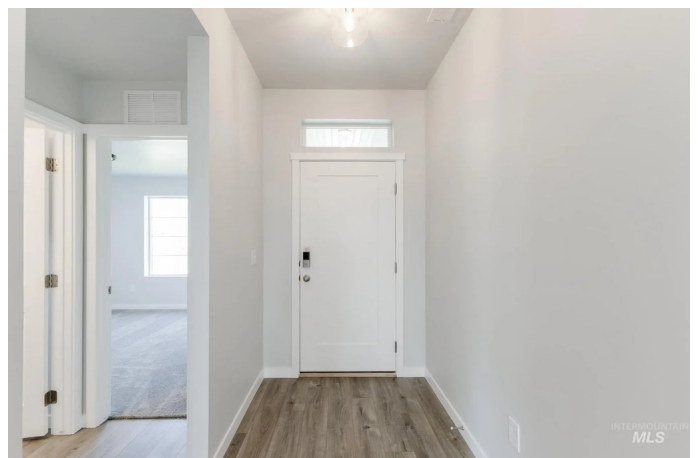
Guches Place, Caldwell, ID

Fall in Love with Low Rates! Promotional rate as low as 2.99%. Ask a Sales Specialist for details! This brand new home located in vibrant Caldwell, Idaho welcomes you with open arms. The Willow 1860's single level space is smartly laid out, boasting two bedrooms situated at the front of the home. To entertain or for personal relaxation, escape into the spacious vaulted great room and dining room that open onto a back patio. Natural light cascades through the windows, adding an illuminated touch to the vaulted ceiling. The kitchen comes with stainless steel appliances and stylish solid surface countertops, adding both functionality and aesthetics to the kitchen. Retreat to the primary suite for restful nights, complete with a roomy en suite bathroom, dual vanities, a stand-up shower, and a walk-in closet. With its open design and ample storage, the Willow 1860 offers everything you need in a beautiful, functional space. Photos are of the actual home!

Built in 2025

Essential Information

MLS® #	98957783
Price Per SQFT	\$229
Bedrooms	4
Bathrooms	2.00
Square Footage	1,860



Acres	0.19
Year Built	2025
Type	Residential
Sub-Type	Single Family Residence
Status	Active

Community Information

Address	16312 Backfill Ave
Area	Caldwell SW - 1280
Subdivision	Guches Place
City	Caldwell
County	Canyon
State	ID
Zip Code	83607
Builder	CBH Homes

Amenities

Utilities	Sewer Connected
Parking Spaces	2
Parking	Attached
# of Garages	2
Golf Course	N
Virtual Tour	https://my.matterport.com/show/?m=S6mXGSyezjg&mls=1

Interior

Interior Features	Bath-Master, Bed-Master Main Level, Split Bedroom, Double Vanity, Walk-In Closet(s), Pantry, Kitchen Island, Solid Surface Counters
Appliances	Gas Water Heater, Dishwasher, Disposal, Microwave, Oven/Range Freestanding
Heating	Forced Air, Natural Gas
Cooling	Central Air
Stories	One
Primary On Main	Yes

Exterior

Lot Description	Standard Lot 6000-9999 SF, Sidewalks, Auto Sprinkler System, Partial Sprinkler System
Roof	Composition

School Information

District	Vallivue School District #139
Elementary	Central Canyon
Middle	Vallivue Middle
High	Vallivue

Additional Information

Date Listed	August 11th, 2025
Days on Market	38
HOA Fees	\$500
HOA Fees Freq.	Annually
New Construction	Yes
Tax Year	2025
Office	CBH Sales & Marketing Inc
Contact Info	tarak@cbhhomes.com

Listing Details

Listing Office	CBH Sales & Marketing Inc
----------------	---------------------------



IDX information is provided exclusively for consumers' personal, non-commercial use, and may not be used for any purpose other than to identify prospective properties consumers may be interested in purchasing. IMLS does not assume any liability for missing or inaccurate data. Information provided by IMLS is deemed reliable but not guaranteed.

Listing information last updated on October 15th, 2025 at 10:48am MDT