

\$579,900 - 1108 E Exploration Dr, Kuna

MLS® #98956868

\$579,900

3 Bedroom, 2.00 Bathroom, 1,772 sqft
Residential on 0.17 Acres

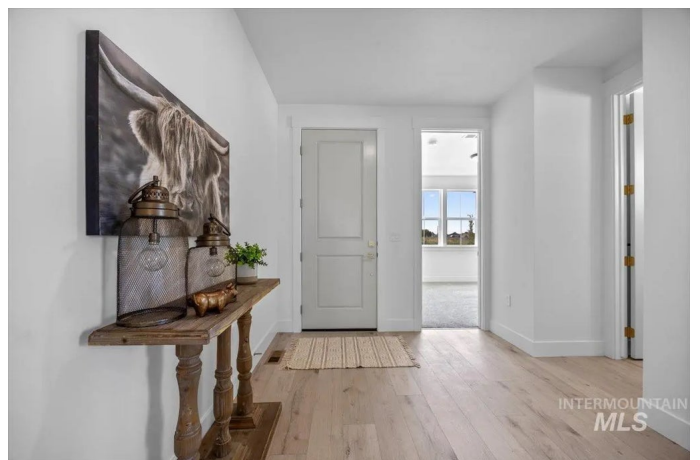
Journey's End, Kuna, ID

This home is a seamless blend of efficiency and design. You will fall in love with this beautiful home. We sit at 1,772sqft, with 3 bedrooms and 2 bathrooms. The kitchen features SS Bosch appliances, a full backsplash, a spacious pantry, soft-close doors and drawers, and an open layout that connects to the great room, which features a beautiful fireplace. All the cabinetry throughout the home matches and has a great soft-close feature, quartz countertops, and tile backsplashes. The primary suite has a nice feel of light and brightness. Enter the bathroom suite and find dual sinks, and again the cabinetry with quartz counter-tops with soft close feature, tiled shower, tub, and a walk-in closet. In the laundry room, you will find 2 cabinets and a clothes rod. The 2nd and 3rd bedrooms are a nice size. The backyard is fenced and has been completed with sod, sprinklers, and big boulders for a retaining wall, and spacious 10x20 patio. Don't miss the Boat/RV garage, which is 12x37

Built in 2025

Essential Information

MLS® #	98956868
Price Per SQFT	\$327
Bedrooms	3
Bathrooms	2.00
Square Footage	1,772



Acres	0.17
Year Built	2025
Type	Residential
Sub-Type	Single Family Residence
Status	Active

Community Information

Address	1108 E Exploration Dr
Area	Kuna - 1100
Subdivision	Journey's End
City	Kuna
County	Ada
State	ID
Zip Code	83634
Builder	Hathaway Homes

Amenities

Utilities	Sewer Connected
Parking Spaces	3
Parking	Attached, RV Access/Parking
# of Garages	3
RV/Boat Parking	Yes
Golf Course	N
Virtual Tour	https://tourfactory.com/idxr3219215

Interior

Interior Features	Bath-Master, Bed-Master Main Level, Double Vanity, Walk-In Closet(s), Pantry, Kitchen Island, Quartz Counters
Appliances	Gas Water Heater, Dishwasher, Disposal, Microwave, Oven/Range Freestanding, Gas Oven, Gas Range
Heating	Forced Air, Natural Gas
Cooling	Central Air
Fireplace	Yes
Fireplaces	Gas, Insert
Stories	One
Primary On Main	Yes

Exterior

Lot Description	Standard Lot 6000-9999 SF, Auto Sprinkler System, Drip Sprinkler
-----------------	--

	System, Pressurized Irrigation Sprinkler System
Roof	Architectural Style
Foundation	Crawl Space

School Information

District	Kuna School District #3
Elementary	Hubbard
Middle	Fremont
High	Kuna

Additional Information

Date Listed	August 2nd, 2025
Days on Market	53
Zoning	R6
HOA Fees	\$375
HOA Fees Freq.	Annually
New Construction	Yes
Tax Year	2025
Office	Silvercreek Realty Group
Contact Info	broker@silvercreekrealty.com

Listing Details

Listing Office	Silvercreek Realty Group
----------------	--------------------------



IDX information is provided exclusively for consumers' personal, non-commercial use, and may not be used for any purpose other than to identify prospective properties consumers may be interested in purchasing. IMLS does not assume any liability for missing or inaccurate data. Information provided by IMLS is deemed reliable but not guaranteed.

Listing information last updated on October 14th, 2025 at 2:34pm MDT