

# \$1,399,000 - 1018 N 63rd St, Nampa

MLS® #98956724

**\$1,399,000**

3 Bedroom, 3.00 Bathroom, 3,201 sqft  
Residential on 1.00 Acres

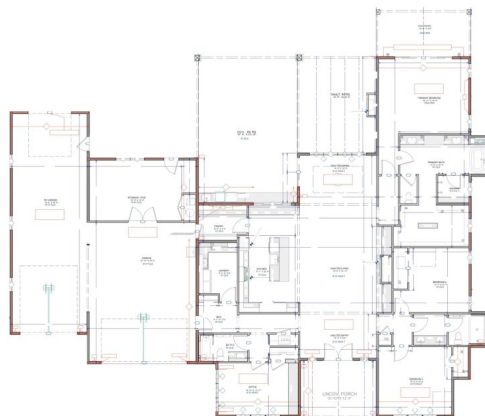
Skyview Acres, Nampa, ID

Welcome to Skyview! Built by Kinde Homes, this incredible home sits on a one acre lot and offers the space you need, with the luxury finishes you want. The double front doors invite you in, a vaulted entry greets you and welcomes you to the wide open living space, living and dining rooms with a gorgeous kitchen to your left with a large walk in pantry. Beyond the kitchen and dining room, a massive covered patio awaits. Light the fire outside and enjoy your quiet piece of the Idaho dream while you sip a glass of wine after a long day. The large primary suite and spa like bathroom provide the perfect space for your sanctuary of solitude. Bedrooms 2 & 3 share a jack and jill bath and across the entry, a private office or 4th bedroom. The 2 car garage and large RV have a secret to tell with a 287 sq ft space for a shop, storage or personal gym. You don't want to miss this one! Build with Kinde Homes where every build is one of a kind.

Built in 2025

## Essential Information

MLS® #	98956724
Price Per SQFT	\$437
Bedrooms	3
Bathrooms	3.00
Square Footage	3,201
Acres	1.00



Year Built	2025
Type	Residential
Sub-Type	Single Family w/ Acreage
Status	Active

### **Community Information**

Address	1018 N 63rd St
Area	Nampa NE (87) - 1250
Subdivision	Skyview Acres
City	Nampa
County	Canyon
State	ID
Zip Code	83687
Builder	Kinde Homes

### **Amenities**

Parking Spaces	3
Parking	Attached, RV Access/Parking
# of Garages	3
RV/Boat Parking	Yes
Golf Course	N

### **Interior**

Interior Features	Bath-Master, Bed-Master Main Level, Den/Office, Double Vanity, Walk-In Closet(s), Breakfast Bar, Pantry, Kitchen Island
Appliances	Dishwasher, Disposal, Double Oven, Microwave, Oven/Range Built-In, Refrigerator
Heating	Forced Air, Natural Gas
Cooling	Central Air
Fireplace	Yes
Fireplaces	Two, Gas, Insert
Stories	One
Primary On Main	Yes

### **Exterior**

Lot Description	1 - 4.99 AC, R.V. Parking
Roof	Composition
Foundation	Crawl Space

### **School Information**

District	Nampa School District #131
Elementary	Parkridge
Middle	East Valley Mid
High	Columbia

### **Additional Information**

Date Listed	August 1st, 2025
Days on Market	62
New Construction	Yes
Tax Year	2025
Office	Presidio Real Estate Idaho
Contact Info	bmayesreo@msn.com

### **Listing Details**

Listing Office	Presidio Real Estate Idaho
----------------	----------------------------



IDX information is provided exclusively for consumers' personal, non-commercial use, and may not be used for any purpose other than to identify prospective properties consumers may be interested in purchasing. IMLS does not assume any liability for missing or inaccurate data. Information provided by IMLS is deemed reliable but not guaranteed.

Listing information last updated on October 12th, 2025 at 8:03am MDT