

\$434,900 - 704 S Kiser Ave, Boise

MLS® #98956546

\$434,900

3 Bedroom, 2.00 Bathroom, 1,481 sqft

Residential on 0.15 Acres

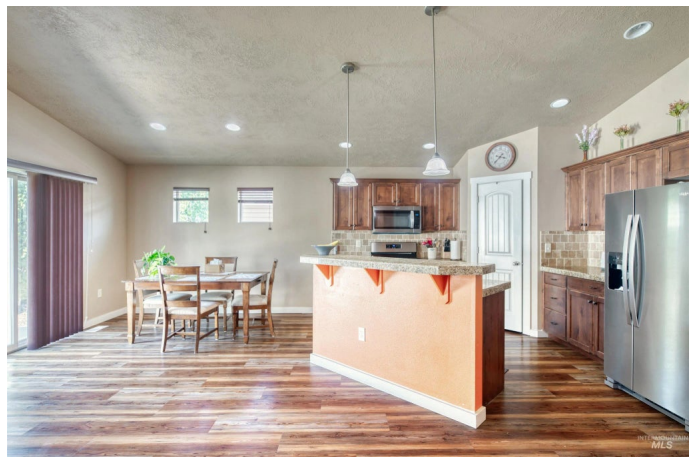
Rivendell Estates, Boise, ID

Location and desirable single level living!
Conveniently located close to shopping, hospitals, and most of your day to day needs. This cheerful & welcoming home offers many desirable features including newer flooring, living & kitchen entertainment style, and a true primary bedroom with ensuite & walk-in closet. The living room is an open concept to the kitchen with abundant natural light. Stylish flooring extends from the entryway into the great room. Vaulted ceilings add a lovely openness to the living room. The kitchen features newer dishwasher, granite tile countertops, & island with breakfast bar seating. Relax with a book or cup of coffee on the back patio. Enjoy easy living in this well-maintained move-in-ready home!

Built in 2010

Essential Information

| | |
|----------------|-------------------------|
| MLS® # | 98956546 |
| Price Per SQFT | \$294 |
| Bedrooms | 3 |
| Bathrooms | 2.00 |
| Square Footage | 1,481 |
| Acres | 0.15 |
| Year Built | 2010 |
| Type | Residential |
| Sub-Type | Single Family Residence |
| Status | Active |



Community Information

| | |
|-------------|--------------------------|
| Address | 704 S Kiser Ave |
| Area | Boise SW-Meridian - 0550 |
| Subdivision | Rivendell Estates |
| City | Boise |
| County | Ada |
| State | ID |
| Zip Code | 83709 |

Amenities

| | |
|----------------|-----------------|
| Utilities | Sewer Connected |
| Parking Spaces | 3 |
| # of Garages | 3 |
| Golf Course | N |

Interior

| | |
|-----------------|-------------------------|
| Appliances | Gas Water Heater |
| Heating | Forced Air, Natural Gas |
| Cooling | Central Air |
| Stories | One |
| Primary On Main | Yes |

Exterior

| | |
|-----------------|--|
| Lot Description | Standard Lot 6000-9999 SF, Garden, Pressurized Irrigation Sprinkler System |
| Roof | Architectural Style |
| Foundation | Crawl Space |

School Information

| | |
|------------|--------------------------|
| District | West Ada School District |
| Elementary | Ustick |
| Middle | Lewis and Clark |
| High | Centennial |

Additional Information

| | |
|----------------|-----------------|
| Date Listed | July 31st, 2025 |
| Days on Market | 29 |
| HOA Fees | \$150 |
| HOA Fees Freq. | Annually |

| | |
|----------------|------------------------------|
| Property Taxes | \$1,689 |
| Tax Year | 2024 |
| Office | Silvercreek Realty Group |
| Contact Info | broker@silvercreekrealty.com |

Listing Details

| | |
|----------------|--------------------------|
| Listing Office | Silvercreek Realty Group |
|----------------|--------------------------|



IDX information is provided exclusively for consumers' personal, non-commercial use, and may not be used for any purpose other than to identify prospective properties consumers may be interested in purchasing. IMLS does not assume any liability for missing or inaccurate data. Information provided by IMLS is deemed reliable but not guaranteed.

Listing information last updated on October 15th, 2025 at 2:33am MDT