

\$550,000 - 783 E Bissett St., Meridian

MLS® #98956509

\$550,000

3 Bedroom, 3.00 Bathroom, 2,272 sqft

Residential on 0.07 Acres

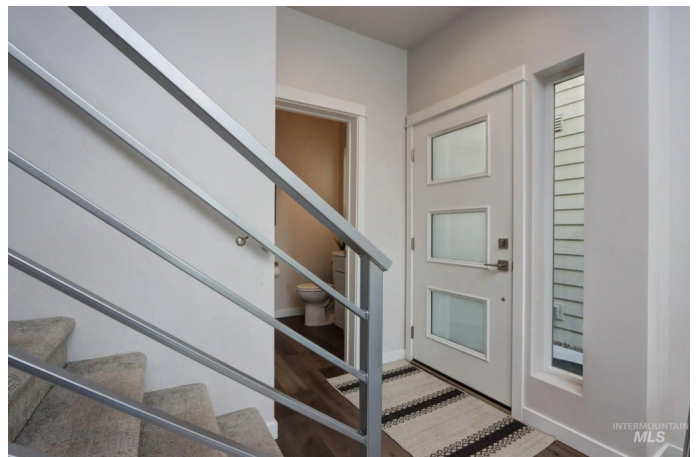
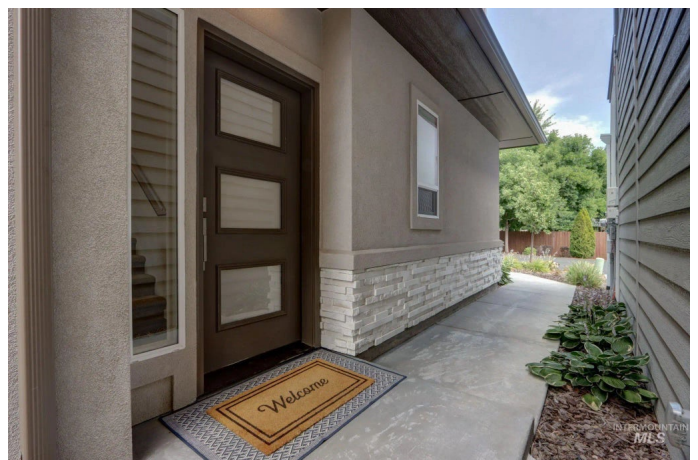
Avebury, Meridian, ID

Enjoy NO drive-through traffic! This almost-new, modern home backs to Five-Mile Creek Trail and feels secluded - but it's halfway between downtown Meridian and Kleiner Park/village shopping w/easy access to city bus route. Tall ceilings on both floors, large bedrooms, open concept living space, abundant closets, dual vanities in the bathrooms, and a 26x13 bonus room upstairs. The covered patio and back yard are exclusively for relaxation because the HOA takes care of all landscaping - so you don't have to. Garage features an extra 7x9 space ideal for workouts or extra storage. Although this is a private, dead-end street, the HOA furnishes an ample-sized parking lot so you can accommodate guests for your celebrations in the huge bonus room! Owner has already done a mini-inspect for roof and attic space.

Built in 2021

Essential Information

MLS® #	98956509
Price Per SQFT	\$242
Bedrooms	3
Bathrooms	3.00
Square Footage	2,272
Acres	0.07
Year Built	2021
Type	Residential



Sub-Type	Single Family Residence
Status	Active

Community Information

Address	783 E Bissett St.
Area	Meridian NE - Boise NW - 1020
Subdivision	Avebury
City	Meridian
County	Ada
State	ID
Zip Code	83642
Builder	Hendricksen

Amenities

Utilities	Sewer Connected, Broadband Internet
Parking Spaces	2
Parking	Attached, Finished Driveway
# of Garages	2
Golf Course	N
Virtual Tour	https://tourfactory.com/idxr3218674

Interior

Interior Features	Bath-Master, Bed-Master Main Level, Split Bedroom, Great Room, Rec/Bonus, Double Vanity, Walk-In Closet(s), Breakfast Bar, Pantry, Kitchen Island, Quartz Counters
Appliances	Gas Water Heater, Tank Water Heater, Dishwasher, Disposal, Microwave, Oven/Range Freestanding, Gas Oven, Gas Range
Heating	Ceiling, Forced Air, Natural Gas
Cooling	Central Air
Stories	Two
Primary On Main	Yes

Exterior

Lot Description	Sm Lot 5999 SF, Bus on City Route, Auto Sprinkler System, Drip Sprinkler System, Full Sprinkler System, Pressurized Irrigation Sprinkler System
Roof	Architectural Style
Foundation	Slab

School Information

District	West Ada School District
Elementary	Meridian
Middle	Meridian Middle
High	Meridian

Additional Information

Date Listed	July 31st, 2025
Days on Market	13
Zoning	R-15
HOA Fees	\$300
HOA Fees Freq.	Quarterly
Property Taxes	\$1,711
Tax Year	2024
Office	Silvercreek Realty Group
Contact Info	broker@silvercreekrealty.com

Listing Details

Listing Office	Silvercreek Realty Group
----------------	--------------------------



IDX information is provided exclusively for consumers' personal, non-commercial use, and may not be used for any purpose other than to identify prospective properties consumers may be interested in purchasing. IMLS does not assume any liability for missing or inaccurate data. Information provided by IMLS is deemed reliable but not guaranteed.

Listing information last updated on October 14th, 2025 at 1:18pm MDT