

\$465,990 - 11080 Noble Dr, Caldwell

MLS® #98956200

\$465,990

5 Bedroom, 3.00 Bathroom, 2,530 sqft

Residential on 0.15 Acres

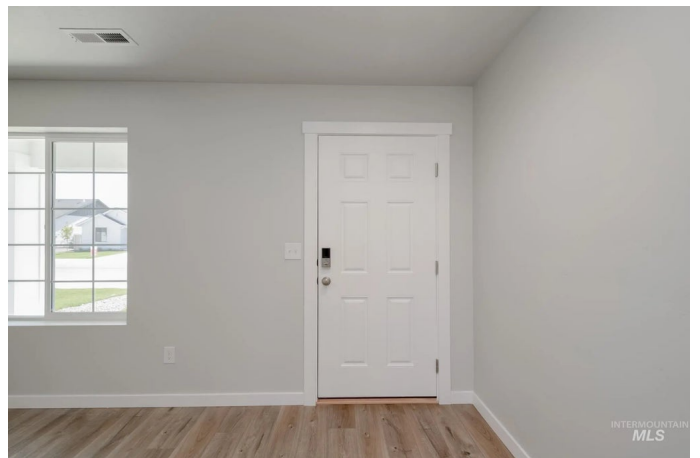
Masterson Ranch, Caldwell, ID

Fall in Love with Low Rates! Promotional rate as low as 2.99%. Ask a Sales Specialist for details! Visit us at our furnished model @19357 Schooner Ave Caldwell, just down the street on Saturdays from 12-4pm! Embrace the comforts of a brand new home in Caldwell, Idaho. Embrace extra space with everything the Columbia 2530 has to offer! Multiple living spaces throughout the home provide unlimited options in how you use them. The main level contains a living room, a gathering room, and a bedroom, while the upstairs hosts an additional 4 bedrooms plus a loft space. The kitchen boasts upgraded finishes, including stainless steel appliances, a gas range, and stylish solid surface countertops. Retire upstairs and luxuriate in the expansive primary suite, which includes a generous walk-in closet and an en suite bathroom with dual vanities. All four bedrooms upstairs are thoughtfully arranged to be set apart from each other, providing privacy for everyone. Photos are of the actual home!

Built in 2025

Essential Information

MLS® #	98956200
Price Per SQFT	\$184
Bedrooms	5
Bathrooms	3.00
Square Footage	2,530



Acres	0.15
Year Built	2025
Type	Residential
Sub-Type	Single Family Residence
Status	Active

Community Information

Address	11080 Noble Dr
Area	Caldwell NW - 1275
Subdivision	Masterson Ranch
City	Caldwell
County	Canyon
State	ID
Zip Code	83605
Builder	CBH Homes

Amenities

Utilities	Sewer Connected
Parking Spaces	3
Parking	Attached
# of Garages	3
Golf Course	N
Virtual Tour	https://my.matterport.com/show/?m=K7RvELRhaUn&mls=1

Interior

Interior Features	Bath-Master, Family Room, Great Room, Double Vanity, Walk-In Closet(s), Loft, Breakfast Bar, Pantry, Kitchen Island, Solid Surface Counters
Appliances	Gas Water Heater, Dishwasher, Disposal, Oven/Range Freestanding, Gas Range
Heating	Forced Air, Natural Gas
Cooling	Central Air
Stories	Two

Exterior

Lot Description	Standard Lot 6000-9999 SF, Irrigation Available, Sidewalks, Auto Sprinkler System, Partial Sprinkler System, Pressurized Irrigation Sprinkler System, Irrigation Sprinkler System
Roof	Composition

School Information

District	Vallivue School District #139
Elementary	Skyway
Middle	Summitvue
High	Ridgevue

Additional Information

Date Listed	July 29th, 2025
Days on Market	51
HOA Fees	\$450
HOA Fees Freq.	Annually
New Construction	Yes
Tax Year	2024
Office	CBH Sales & Marketing Inc
Contact Info	tarak@cbhhomes.com

Listing Details

Listing Office	CBH Sales & Marketing Inc
----------------	---------------------------



IDX information is provided exclusively for consumers' personal, non-commercial use, and may not be used for any purpose other than to identify prospective properties consumers may be interested in purchasing. IMLS does not assume any liability for missing or inaccurate data. Information provided by IMLS is deemed reliable but not guaranteed.

Listing information last updated on October 15th, 2025 at 5:03am MDT