

\$485,000 - 6482 Oreana Dr, Boise

MLS® #98955833

\$485,000

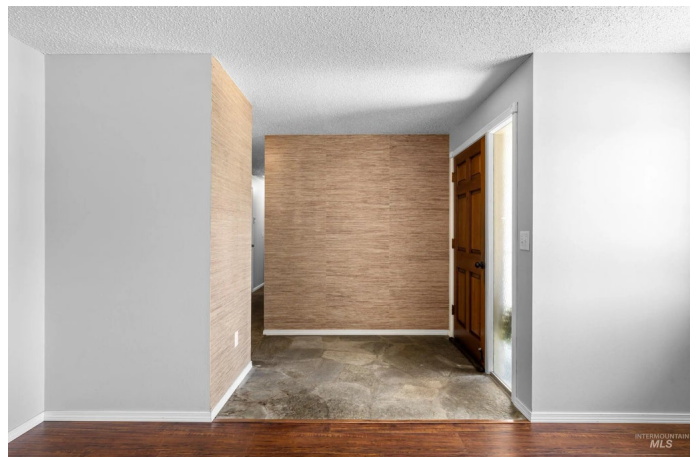
3 Bedroom, 3.00 Bathroom, 1,946 sqft

Residential on 0.22 Acres

Owyhee View Sub, Boise, ID

Enjoy easy single-level living in one of Boise's most established and centrally located neighborhoods—just minutes from shopping, restaurants, schools, the airport, and only 10 minutes to downtown Boise and BSU. Inside, the home opens into two generous “wings.” The formal living room welcomes you with a cozy wood-burning fireplace, while the spacious family room offers plenty of room to relax or host a crowd—something many newer homes simply can't match. Each wing features roomy bedrooms and bathrooms, giving everyone a little extra space to spread out. The primary suite includes a large, cedar-lined walk-in closet, and the kitchen blends timeless craftsmanship with practicality—solid maple cabinets with pull-outs and smooth Corian countertops. Need a creative corner? The enclosed flex space off the deck is perfect for a greenhouse, art studio, or sunny reading nook. Recent updates include fresh interior paint, new carpet in the southwest bedroom, and a stylish new vanity in the half bath. Step outside to a private deck overlooking a fully fenced, oversized backyard with mature landscaping, sprinklers, and an 8'x10' shed with covered carport sides. The attached two-car garage adds even more built-in storage. This home blends comfort, character, and convenience—all in the heart of Boise's beloved Bench.

Built in 1970



Essential Information

MLS® #	98955833
Price Per SQFT	\$249
Bedrooms	3
Bathrooms	3.00
Square Footage	1,946
Acres	0.22
Year Built	1970
Type	Residential
Sub-Type	Single Family Residence
Status	Active

Community Information

Address	6482 Oreana Dr
Area	Boise Bench - 0400
Subdivision	Owyhee View Sub
City	Boise
County	Ada
State	ID
Zip Code	83709

Amenities

Parking Spaces	2
# of Garages	2
Golf Course	N

Interior

Stories	One
Primary On Main	Yes

Exterior

Lot Description	Standard Lot 6000-9999 SF
-----------------	---------------------------

School Information

District	Boise School District #1
Elementary	Grace Jordan
Middle	West Boise Jr
High	Borah

Additional Information

Date Listed	July 25th, 2025
Days on Market	68
Zoning	R-1C
Property Taxes	\$2,904
Tax Year	2024
Office	Keller Williams Realty Boise
Contact Info	broker@kwboise.com

Listing Details

Listing Office	Keller Williams Realty Boise
----------------	------------------------------



IDX information is provided exclusively for consumers' personal, non-commercial use, and may not be used for any purpose other than to identify prospective properties consumers may be interested in purchasing. IMLS does not assume any liability for missing or inaccurate data. Information provided by IMLS is deemed reliable but not guaranteed.

Listing information last updated on October 15th, 2025 at 6:33am MDT