

\$785,000 - 3510 W Lassen, Boise

MLS® #98955825

\$785,000

5 Bedroom, 3.00 Bathroom, 3,234 sqft

Residential on 0.21 Acres

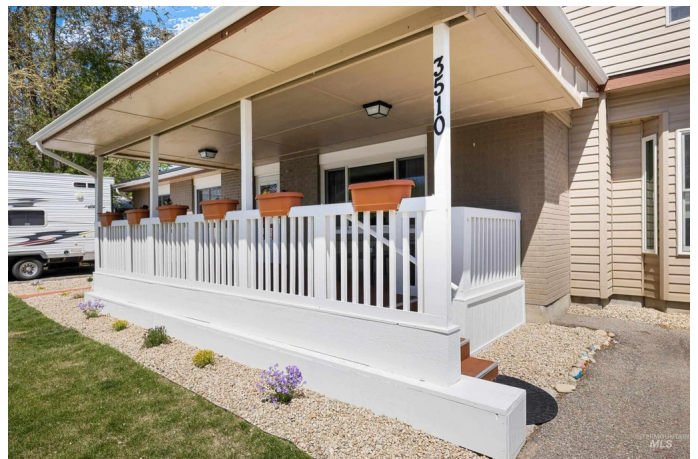
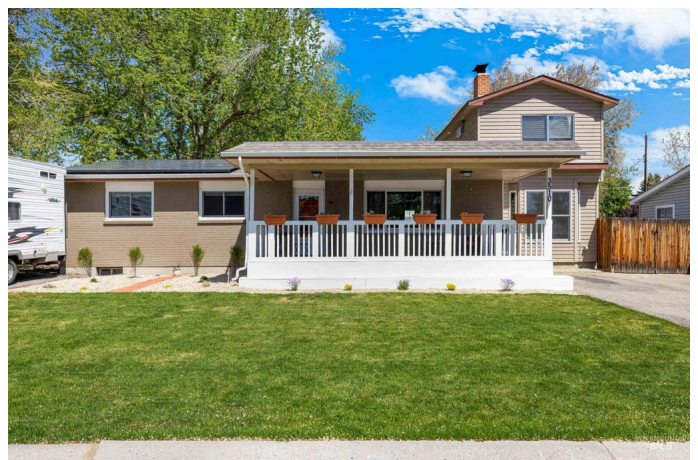
Mitton Sub, Boise, ID

Step Into Comfort, Convenience & Community...Discover this beautifully designed home, perfectly situated within walking distance to highly rated elementary and junior high schools. Just steps from scenic walking trails and surrounded by parks, golf courses, and family-friendly amenities, this residence offers an ideal blend of location and lifestyle. The home features solar panels, smart heating and cooling, and a fully automated irrigation system—providing energy efficiency and low-maintenance living year-round. Average power bills are around \$50/mnth. The front and back yards are thoughtfully landscaped with hardy perennials, offering vibrant color and beauty without the hassle. Located in a welcoming, established neighborhood just two blocks from a local favorite restaurant, this property also boasts a spacious 800 sq ft shop—perfect for hobbies, a workshop, or extra storage. Enjoy a private garden and a lush lawn, ideal for outdoor games or relaxing evenings under the stars. LARGE SHOP!

Built in 1959

Essential Information

MLS® #	98955825
Price Per SQFT	\$243
Bedrooms	5
Bathrooms	3.00
Square Footage	3,234



Acres	0.21
Year Built	1959
Type	Residential
Sub-Type	Single Family Residence
Status	Active

Community Information

Address	3510 W Lassen
Area	Boise North - 0100
Subdivision	Mitton Sub
City	Boise
County	Ada
State	ID
Zip Code	83703-4737

Amenities

Utilities	Sewer Connected, Electricity Connected
Parking	Garage Door Access, Detached, RV Access/Parking, Finished Driveway
RV/Boat Parking	Yes
Golf Course	N
Virtual Tour	https://tourfactory.com/idxr3204437

Interior

Interior Features	Workbench, Bath-Master, Split Bedroom, Den/Office, Formal Dining, Great Room, Rec/Bonus, Granite Counters
Appliances	Gas Water Heater, Dishwasher, Disposal, Oven/Range Freestanding, Refrigerator
Heating	Forced Air, Natural Gas
Cooling	Central Air, Wall/Window Unit(s)
Fireplace	Yes
Fireplaces	One
Stories	Two Story w/ Below Grade

Exterior

Lot Description	Standard Lot 6000-9999 SF, Garden, R.V. Parking, Auto Sprinkler System, Full Sprinkler System
Roof	Composition
Foundation	Crawl Space

School Information

District	Boise School District #1
Elementary	Collister
Middle	Hillside
High	Boise

Additional Information

Date Listed	July 25th, 2025
Days on Market	48
Property Taxes	\$3,883
Tax Year	2024
Structures	Shop, Storage Shed
Office	Timber and Love Realty, LLC
Contact Info	jclintrobertson@gmail.com

Listing Details

Listing Office	Timber and Love Realty, LLC
----------------	-----------------------------



IDX information is provided exclusively for consumers' personal, non-commercial use, and may not be used for any purpose other than to identify prospective properties consumers may be interested in purchasing. IMLS does not assume any liability for missing or inaccurate data. Information provided by IMLS is deemed reliable but not guaranteed.

Listing information last updated on October 14th, 2025 at 10:33pm MDT