

# \$750,000 - 4213 N Dalton Ln, Boise

MLS® #98955791

**\$750,000**

Bedroom, Bathroom,  
Land on 0.89 Acres

Meadow Place, Boise, ID

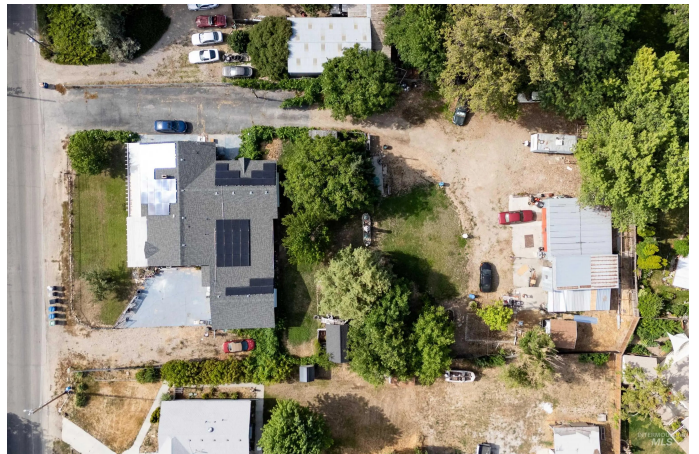
Endless possibilities await! This 0.887-acre lot offers the freedom you need with no CC&Rs. Remodel the current home and enjoy a compound on 0.887 acres in West Boise/Garden City. Property includes: 3-bay shop with loft, half bath and 11x12 sliding RV door, a 9x11 shed, a 11x15 barn w/ loft, and a massive chicken coop. Property is zoned R-1C so this infill lot is full of potential. Spacious home has 4bed/2bath, large office and separate living room and family room and is serviced by a well with local water for irrigation (less than \$100 a year). Home is on city sewer but has a septic for shop's half bathroom. Bring your RV's! Complete RV hook-up with water, electric and septic. Home comes with a 1-yr Innovate Home Warranty.

## Essential Information

MLS® #	98955791
Price Per Acre	\$842,697
Acres	0.89
Type	Land
Sub-Type	Unimproved Land
Status	Active

## Community Information

Address	4213 N Dalton Ln
Area	Boise W-Garden City - 0650
Subdivision	Meadow Place



City	Boise
County	Ada
State	ID
Zip Code	83704

### Amenities

Utilities	Electricity Available, Natural Gas Connected, Electricity Connected, Phone Connected, Sewer Connected
Golf Course	N
Virtual Tour	<a href="https://brooksimaging.hd.pics/4213-N-Dalton-Ln-1/idx">https://brooksimaging.hd.pics/4213-N-Dalton-Ln-1/idx</a>

### Exterior

Lot Description	1/2 Acre - .99 Acres, Irrigation, Level, Solar Potential
-----------------	--

### School Information

District	West Ada School District
Elementary	McMillan
Middle	LwlScottJr
High	Centennial

### Additional Information

Date Listed	July 23rd, 2025
Days on Market	6
Zoning	R-1C
Property Taxes	\$2,944
Tax Year	2024
Office	MORE Realty
Contact Info	blkolsen@gmail.com

### Listing Details

Listing Office	MORE Realty
----------------	-------------



IDX information is provided exclusively for consumers' personal, non-commercial use, and may not be used for any purpose other than to identify prospective properties consumers may be interested in purchasing. IMLS does not assume any liability for missing or inaccurate data. Information provided by IMLS is deemed reliable but not guaranteed.

Listing information last updated on October 14th, 2025 at 3:03pm MDT