

\$719,900 - 1357 W Eiger Dr, Nampa

MLS® #98955499

\$719,900

3 Bedroom, 3.00 Bathroom, 2,360 sqft
Residential on 0.21 Acres

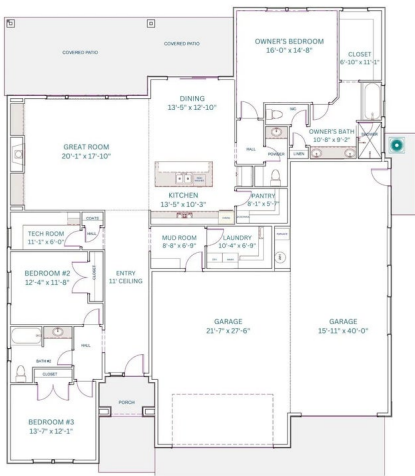
Summit Ridge (Canyon Co), Nampa, ID

One of the last available RV homes in South Nampaâ€™s sought-after Summit Ridge community, The Blackwood by Biltmore Co., LLC is a stunning new home offering luxury, space, and privacy. This beautifully designed single-level home features a 40-foot deep RV garage with a 14' tall overhead door, and high-end finishes throughout. An open-concept great room boasts an inviting stone fireplace with custom built-ins, while the gourmet kitchen includes double ovens, a 5-burner gas cooktop and a spacious walk-in pantry. The split-bedroom layout ensures privacy, with the ownerâ€™s suite featuring a spa-like bath for ultimate relaxation and the dedicated tech office provides the perfect remote work or study space. Sitting on a .21 acre lot, this home offers exceptional outdoor living with a 36-foot-wide covered patio. Community amenities include a pool and playground area and manicured common areas. Just minutes from RedHawk Golf Course, Lake Lowell and shopping. This home is under construction. Call for details.

Built in 2025

Essential Information

MLS® #	98955499
Price Per SQFT	\$305
Bedrooms	3
Bathrooms	3.00



Square Footage	2,360
Acres	0.21
Year Built	2025
Type	Residential
Sub-Type	Single Family Residence
Status	Active

Community Information

Address	1357 W Eiger Dr
Area	Nampa South (86) - 1260
Subdivision	Summit Ridge (Canyon Co)
City	Nampa
County	Canyon
State	ID
Zip Code	83686
Builder	Biltmore Co, LLC

Amenities

Utilities	Sewer Connected
Parking Spaces	4
Parking	Attached, RV Access/Parking, Finished Driveway
# of Garages	4
Has Pool	Yes
Pool	Community, In Ground, Pool
RV/Boat Parking	Yes
Golf Course	N

Interior

Interior Features	Bath-Master, Bed-Master Main Level, Split Bedroom, Den/Office, Great Room, Double Vanity, Central Vacuum Plumbed, Walk-In Closet(s), Pantry, Kitchen Island, Quartz Counters
Appliances	Gas Water Heater, ENERGY STAR Qualified Water Heater, Tank Water Heater, Dishwasher, Disposal, Double Oven, Microwave, Oven/Range Built-In, Gas Range
Heating	Forced Air, Natural Gas
Cooling	Central Air
Fireplace	Yes
Fireplaces	One, Gas
Stories	One

Primary On Main Yes

Exterior

Lot Description Standard Lot 6000-9999 SF, Irrigation Available, R.V. Parking, Sidewalks, Auto Sprinkler System, Drip Sprinkler System, Full Sprinkler System, Pressurized Irrigation Sprinkler System

Roof Composition, Architectural Style

Foundation Crawl Space

School Information

District Nampa School District #131

Elementary Lake Ridge

Middle South Middle (Nampa)

High Skyview

Additional Information

Date Listed July 23rd, 2025

Days on Market 3

HOA Fees \$300

HOA Fees Freq. Quarterly

New Construction Yes

Property Taxes \$1,181

Tax Year 2024

Office The Agency Boise

Contact Info opheliehomes@gmail.com

Listing Details

Listing Office The Agency Boise



IDX information is provided exclusively for consumers' personal, non-commercial use, and may not be used for any purpose other than to identify prospective properties consumers may be interested in purchasing. IMLS does not assume any liability for missing or inaccurate data. Information provided by IMLS is deemed reliable but not guaranteed.

Listing information last updated on October 12th, 2025 at 6:48am MDT