

\$899,900 - 6683 N Crantini Pl, Meridian

MLS® #98955460

\$899,900

3 Bedroom, 3.00 Bathroom, 2,212 sqft
Residential on 0.21 Acres

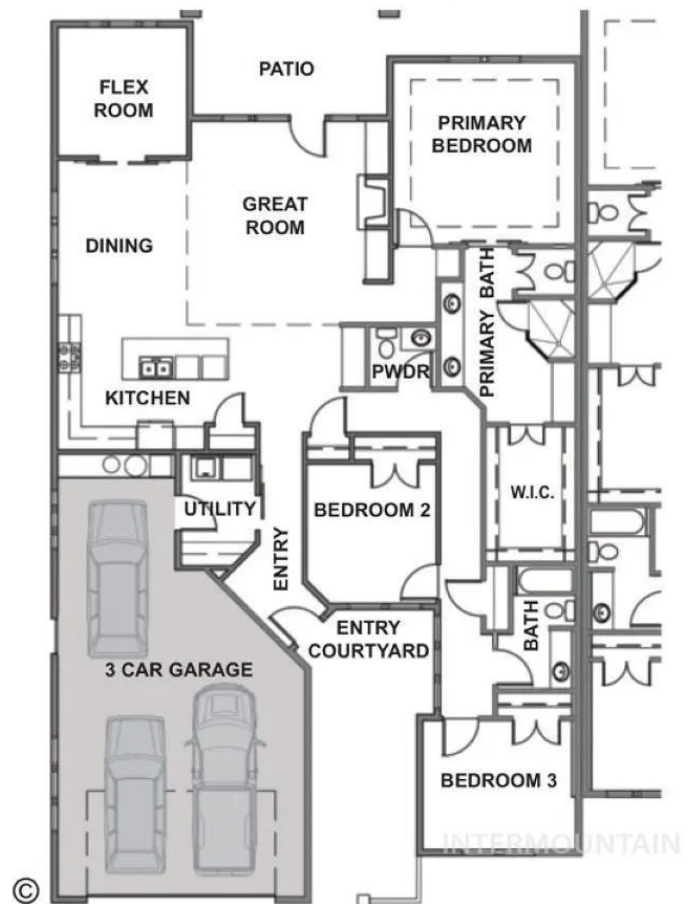
Spurwing Olive Tree, Meridian, ID

"The Augusta" by Gallery Homes by Varriale, a single level upscale townhome situated on the third fairway of Spurwing. This stunning residence features three bedrooms along with a versatile flex/bonus room, all enhanced by an array of custom features. Enjoy the elegance of wood floors, custom cabinetry, and heated floors in the master suite, all within an inviting open floor plan. Olive Tree embodies upscale living, nestled within the expansive greenery of a mature urban golf oasis. The property boasts a lock-and-go lifestyle, with maintenance for yard care and snow removal included in the HOA dues. Please note that the Spurwing social membership and/or golf privileges are not included but are available for purchase. Personalize your new home by selecting your preferred finishes and features.

Built in 2025

Essential Information

MLS® #	98955460
Price Per SQFT	\$407
Bedrooms	3
Bathrooms	3.00
Square Footage	2,212
Acres	0.21
Year Built	2025
Type	Residential



Sub-Type Townhouse
Status Active

Community Information

Address 6683 N Crantini Pl
Area Meridian NW - 1030
Subdivision Spurwing Olive Tree
City Meridian
County Ada
State ID
Zip Code 83646-7049
Builder Gallery Homes by Varriale

Amenities

Utilities Sewer Connected, Cable Connected
Parking Spaces 3
Parking Attached, Finished Driveway
of Garages 3
Golf Course Y

Interior

Interior Features Bath-Master, Bed-Master Main Level, Great Room, Rec/Bonus, Double Vanity, Walk-In Closet(s), Breakfast Bar, Pantry, Kitchen Island, Quartz Counters
Appliances Gas Water Heater, ENERGY STAR Qualified Water Heater, Tank Water Heater, Dishwasher, Disposal, Microwave, Oven/Range Built-In
Heating Forced Air, Natural Gas
Cooling Central Air
Fireplace Yes
Fireplaces One, Gas
Stories One
Primary On Main Yes

Exterior

Lot Description Standard Lot 6000-9999 SF, Golf Course, Sidewalks, Auto Sprinkler System, Drip Sprinkler System, Full Sprinkler System, Pressurized Irrigation Sprinkler System
Roof Tile
Foundation Crawl Space

School Information

District	West Ada School District
Elementary	Willow Creek
Middle	Sawtooth Middle
High	Rocky Mountain

Additional Information

Date Listed	July 22nd, 2025
Days on Market	3
Zoning	R-8
HOA Fees	\$167
HOA Fees Freq.	Monthly
New Construction	Yes
Tax Year	2025
Office	Coldwell Banker Tomlinson
Contact Info	bvanallen@cbboise.com

Listing Details

Listing Office	Coldwell Banker Tomlinson
----------------	---------------------------



IDX information is provided exclusively for consumers' personal, non-commercial use, and may not be used for any purpose other than to identify prospective properties consumers may be interested in purchasing. IMLS does not assume any liability for missing or inaccurate data. Information provided by IMLS is deemed reliable but not guaranteed.

Listing information last updated on October 19th, 2025 at 4:18am MDT