

\$846,900 - 6773 N Ellis Park Ave #spruce, Meridian

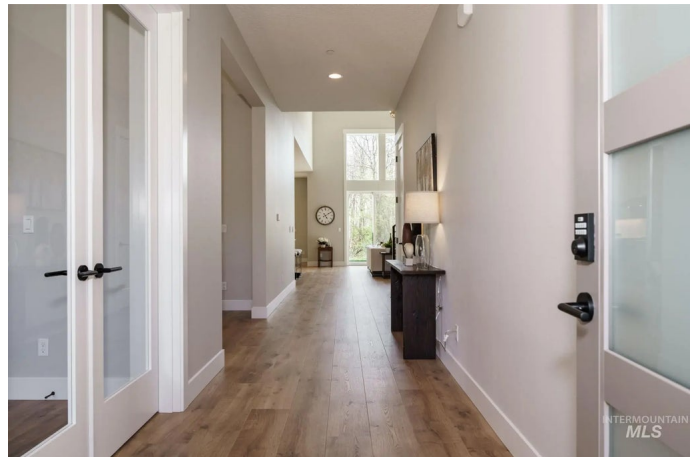
MLS® #98955312

\$846,900

4 Bedroom, 3.00 Bathroom, 3,213 sqft
Residential on 0.21 Acres

Inspirado, Meridian, ID

To Be Built. Discover the Spruce, a thoughtfully design plan perfect for every lifestyle! The heart of the home is the dramatic two-story great room with a beautiful gas fireplace, seamlessly connected to the chef's kitchen featuring full-height custom cabinetry, sleek slab countertops, high end appliances, a dining nook, walk-in pantry, & a convenient BUTLERS PANTRY that leads to a formal dining room! A main-level den offers flexibility as a home office or second living space! Retreat to your MAIN LEVEL primary suite w/ a luxurious bath offering multiple shower options. Upstairs, you'll find 3 large bedrooms, a full bath, large laundry room with addition flex space! PERSONALIZE your home at PLH's exclusive Design Studio! INSPIRADO to feature a clubhouse, pool, park, paths w/views & PICKLEBALL COURTS! 6-7 MONTH process from contract! Model open Wed-Sun -11am - 6pm - 7763 W Daybreak Run Ct. *If this floor plan doesn't work for you, we have other options including RV BAYS & MULTI- GEN Options!



Built in 2026

Essential Information

MLS® #	98955312
Price Per SQFT	\$264
Bedrooms	4
Bathrooms	3.00

Square Footage	3,213
Acres	0.21
Year Built	2026
Type	Residential
Sub-Type	Single Family Residence
Status	Active

Community Information

Address	6773 N Ellis Park Ave #spruce
Area	Meridian NW - 1030
Subdivision	Inspirado
City	Meridian
County	Ada
State	ID
Zip Code	83646
Builder	Pacific Lifestyle Homes

Amenities

Utilities	Sewer Connected
Parking Spaces	3
Parking	Attached, Finished Driveway
# of Garages	3
Has Pool	Yes
Pool	Community, Pool
Golf Course	N

Interior

Interior Features	Bath-Master, Bed-Master Main Level, Split Bedroom, Den/Office, Formal Dining, Great Room, Rec/Bonus, Double Vanity, Walk-In Closet(s), Pantry, Kitchen Island, Quartz Counters
Appliances	Gas Water Heater, Dishwasher, Disposal, Microwave, Oven/Range Freestanding, Gas Range
Heating	Forced Air, Natural Gas
Cooling	Central Air
Fireplace	Yes
Fireplaces	One, Gas
Stories	Two
Primary On Main	Yes

Exterior

Lot Description	Standard Lot 6000-9999 SF, Irrigation Available, Sidewalks, Auto Sprinkler System, Full Sprinkler System, Pressurized Irrigation Sprinkler System
Roof	Composition, Architectural Style
Foundation	Crawl Space

School Information

District	West Ada School District
Elementary	Pleasant View
Middle	Star
High	Owyhee

Additional Information

Date Listed	July 21st, 2025
Days on Market	72
Zoning	City of Star-R-3PUD-DA
HOA Fees	\$600
HOA Fees Freq.	Quarterly
New Construction	Yes
Tax Year	2024
Office	Presidio Real Estate Idaho
Contact Info	bmayerseo@msn.com

Listing Details

Listing Office	Presidio Real Estate Idaho
----------------	----------------------------



IDX information is provided exclusively for consumers' personal, non-commercial use, and may not be used for any purpose other than to identify prospective properties consumers may be interested in purchasing. IMLS does not assume any liability for missing or inaccurate data. Information provided by IMLS is deemed reliable but not guaranteed.

Listing information last updated on October 14th, 2025 at 8:48am MDT