

# \$404,990 - 1740 Sw Besra Dr, Mountain Home

MLS® #98955227

**\$404,990**

4 Bedroom, 2.00 Bathroom, 2,126 sqft  
Residential on 0.17 Acres

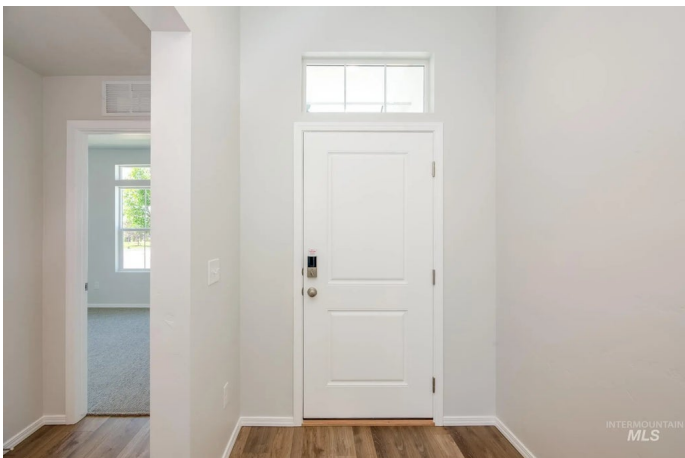
Blue Yonder, Mountain Home, ID

Fall in Love with Low Rates! Promotional rate as low as 2.99%. Ask a Sales Specialist for details! This brand new home located in vibrant Mountain Home, Idaho welcomes you with open arms. The Preston 2126 is designed with easy living in mind. Enter inside to the dedicated entryway and make your way to the open living areas, where vaulted ceilings and an abundance of natural light await. The kitchen, living room, and dining room combine to make the perfect hosting space, ready for get-togethers or movie nights. The kitchen comes with stainless steel appliances and stylish solid surface countertops, adding both functionality and aesthetics to the kitchen. The primary suite is tucked towards the back of the home for peace and tranquility with its large en suite bath and walk-in closet. Two additional bedrooms share a well-appointed full bathroom. Potential RV parking available. Photos are similar. All selections are subject to change without notice, please call to verify.

Built in 2025

## Essential Information

MLS® #	98955227
Price Per SQFT	\$190
Bedrooms	4
Bathrooms	2.00
Square Footage	2,126
Acres	0.17



Year Built	2025
Type	Residential
Sub-Type	Single Family Residence
Status	Active

### Community Information

Address	1740 Sw Besra Dr
Area	Mtn Home-Elmore - 1500
Subdivision	Blue Yonder
City	Mountain Home
County	Elmore
State	ID
Zip Code	83647
Builder	CBH Homes

### Amenities

Utilities	Sewer Connected
Parking Spaces	2
Parking	Attached
# of Garages	2
Golf Course	N
Virtual Tour	<a href="https://my.matterport.com/show/?m=Y9Xew7MeMdN&amp;mls=1">https://my.matterport.com/show/?m=Y9Xew7MeMdN&amp;mls=1</a>

### Interior

Interior Features	Bath-Master, Bed-Master Main Level, Family Room, Double Vanity, Walk-In Closet(s), Breakfast Bar, Pantry, Kitchen Island, Solid Surface Counters
Appliances	Gas Water Heater, Dishwasher, Disposal, Microwave, Oven/Range Freestanding
Heating	Forced Air, Natural Gas
Cooling	Central Air
Stories	One
Primary On Main	Yes

### Exterior

Lot Description	Standard Lot 6000-9999 SF, Sidewalks, Auto Sprinkler System, Full Sprinkler System
Roof	Composition

### School Information

District	Mountain Home School District #193
Elementary	Mountain Home
Middle	Mtn Home
High	Mountain Home

### **Additional Information**

Date Listed	July 21st, 2025
Days on Market	84
HOA Fees	\$575
HOA Fees Freq.	Annually
New Construction	Yes
Tax Year	2024
Office	CBH Sales & Marketing Inc
Contact Info	tarak@cbhhomes.com

### **Listing Details**

Listing Office	CBH Sales & Marketing Inc
----------------	---------------------------



IDX information is provided exclusively for consumers' personal, non-commercial use, and may not be used for any purpose other than to identify prospective properties consumers may be interested in purchasing. IMLS does not assume any liability for missing or inaccurate data. Information provided by IMLS is deemed reliable but not guaranteed.

Listing information last updated on October 15th, 2025 at 3:48pm MDT