

\$335,990 - 1670 Sw Besra Dr, Mountain Home

MLS® #98955224

\$335,990

3 Bedroom, 2.00 Bathroom, 1,207 sqft

Residential on 0.14 Acres

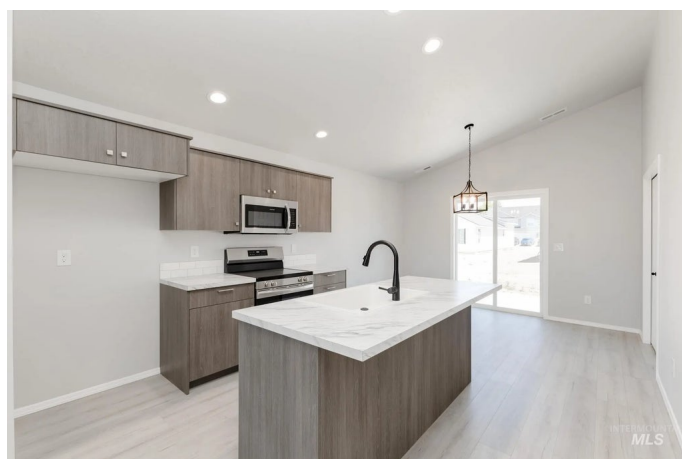
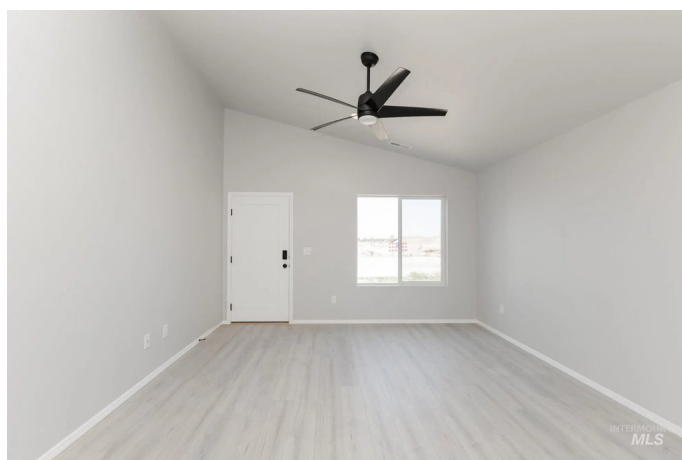
Blue Yonder, Mountain Home, ID

Fall in Love with Low Rates! Promotional rate as low as 2.99%. Ask a Sales Specialist for details! This brand new home located in vibrant Mountain Home, Idaho welcomes you with open arms. The Stella 1207 is adorable and bursting with charm! This thoughtful floor plan flows seamlessly through the home to deliver a cozy living experience. Three bedrooms, all situated on one side of the home, are designed to provide a secluded get-away to everyone. The centrally located living room, kitchen, and dining room are the heart of the home for lounging or entertaining. The kitchen is well-equipped with a spacious island, modern appliances, and plenty of counter space for all your culinary needs. The primary suite provides an en suite bathroom and large closet. Enjoy easy access to the back patio from the dining room and make the most of the pleasant Idaho weather, perfect for outdoor gatherings or quiet relaxation. Potential RV parking available. Photos are of the actual home!

Built in 2025

Essential Information

MLS® #	98955224
Price Per SQFT	\$278
Bedrooms	3
Bathrooms	2.00
Square Footage	1,207



Acres	0.14
Year Built	2025
Type	Residential
Sub-Type	Single Family Residence
Status	Active

Community Information

Address	1670 Sw Besra Dr
Area	Mtn Home-Elmore - 1500
Subdivision	Blue Yonder
City	Mountain Home
County	Elmore
State	ID
Zip Code	83647
Builder	CBH Homes

Amenities

Utilities	Sewer Connected, Broadband Internet
Parking Spaces	2
Parking	Attached
# of Garages	2
Golf Course	N
Virtual Tour	https://my.matterport.com/show/?m=YbujJHgEiFu&mls=1

Interior

Interior Features	Bath-Master, Bed-Master Main Level, Walk-In Closet(s), Breakfast Bar, Pantry, Kitchen Island
Appliances	Gas Water Heater, Dishwasher, Disposal, Oven/Range Freestanding
Heating	Forced Air, Natural Gas
Cooling	Central Air
Stories	One
Primary On Main	Yes

Exterior

Lot Description	Standard Lot 6000-9999 SF, Sidewalks, Auto Sprinkler System, Full Sprinkler System
Roof	Composition

School Information

District	Mountain Home School District #193
Elementary	Mountain Home
Middle	Mtn Home
High	Mountain Home

Additional Information

Date Listed	July 21st, 2025
Days on Market	70
HOA Fees	\$575
HOA Fees Freq.	Annually
New Construction	Yes
Tax Year	2024
Office	CBH Sales & Marketing Inc
Contact Info	tarak@cbhhomes.com

Listing Details

Listing Office	CBH Sales & Marketing Inc
----------------	---------------------------



IDX information is provided exclusively for consumers' personal, non-commercial use, and may not be used for any purpose other than to identify prospective properties consumers may be interested in purchasing. IMLS does not assume any liability for missing or inaccurate data. Information provided by IMLS is deemed reliable but not guaranteed.

Listing information last updated on October 15th, 2025 at 12:18pm MDT